



**Valvole a sfera, valvole di ritegno, collettori, saracinesche, filtri**  
*brass ball valves, check valves, gate valves, filter*

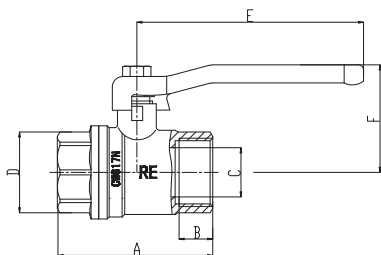
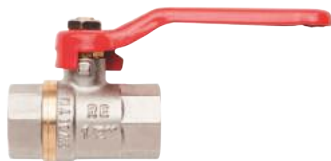
**Raccorderie  Emiliane**

I nostri articoli sono costruiti con materiali conformi alle normative vigenti in stabilimenti tecnologicamente all'avanguardia.

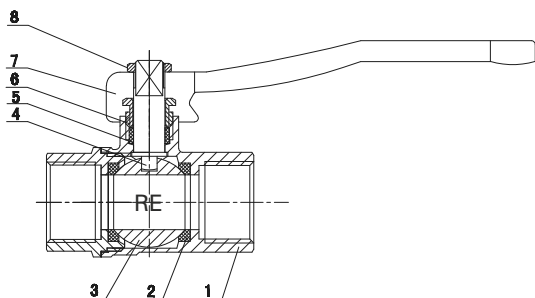
*Our articles are produced according to the applicable regulations in technologically advanced establishments.*

**ART. 300**

Valvola a sfera F.F., leva in acciaio verniciato, corpo in ottone nichelato. Temperatura d'esercizio min/ max -20°C/150°C.  
F.F. ball valve, with handle, body nickerled brass.



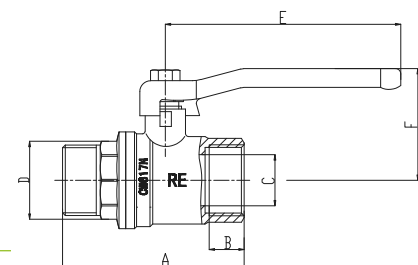
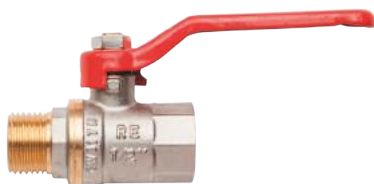
Codice/Code	Ø	A	B	C	D	E	F	Pressione kg/cm <sup>2</sup>	Conf./Pack		€ cad./ € each
1100028	1/2"	51	11,5	14	24,7	84	41	30 bar	16	160	4,25
1100029	3/4"	60	13	19	29,5	84	44,5	30 bar	12	120	5,80
1100030	1"	65	14	22,5	36	104,5	57	30 bar	10	80	8,95
1100031	1"1/4	78	14,5	30	46	120	63	20 bar	8	32	14,20
1100032	1"1/2	83	15,5	35	52,5	168	80	20 bar	6	24	21,30
1100033	2"	98	16,5	45	65	168	86	20 bar	2	16	33,20
1100034	2"1/2	123,5	19	59	82,5	220	105	16 bar	2	6	72,00
1100035	3"	154	22	73	100	255	130	16 bar	2	4	117,00
1100037	4"	177	24	95	126	255	144	16 bar	2	2	194,00



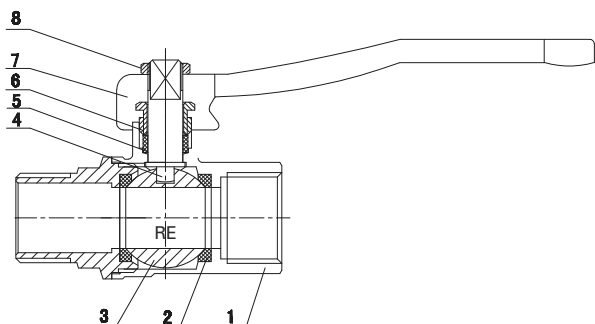
N° POS	DESCRIZIONE DESCRIPTION	Q.tà Q.tY	MATERIALE MATERIAL
1	CORPO BODY	1	CW617N OTTONE
2	SEDE SEAT	2	PTFE
3	SFERA BALL	1	HPb58-3A OTTONE
4	ASTA DI MANOVRA STEM	1	HPb58-3A OTTONE
5	ANELLO DI TENUITA SEALING RING	1	PTFE
6	DADO FIXING NUT	1	HPb58-3C OTTONE
7	MANIGLIA LEVEL HANDLE	1	FE ACCIAIO
8	VITE HEX NUT	1	Q235 NICKEL.PLATE ACCIAIO-ZINCATO

**ART. 302**

Valvola a sfera M.F., leva acciaio verniciato, corpo in ottone nichelato. Temperatura d'esercizio min/ max -20°C/150°C.  
M.F. ball valve, steel handle, body nickerled brass.



Codice/Code	Ø	A	B	C	D	E	F	Pressione kg/cm <sup>2</sup>	Conf./Pack		€ cad./ € each
1100228	1/2"	59	11,5	14	21,5	84	41	30 bar	16	160	4,50
1100229	3/4"	67,5	13	19	27,5	84	44,5	30 bar	12	96	6,30
1100230	1"	73,5	14	22,5	35	104,5	57	30 bar	10	80	9,75
1100231	1"1/4	89,5	14,5	30	45	120	63	20 bar	8	32	15,80
1100232	1"1/2	99	15,5	35	50	168	80	20 bar	6	24	23,40
1100233	2"	116,5	16,5	45	64	168	86	20 bar	2	16	36,50

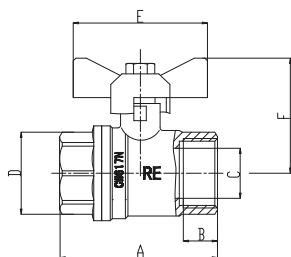


N° POS	DESCRIZIONE DESCRIPTION	Q.tà Q.tY	MATERIALE MATERIAL
1	CORPO BODY	1	CW617N OTTONE
2	SEDE SEAT	2	PTFE
3	SFERA BALL	1	HPb58-3A OTTONE
4	ASTA DI MANOVRA STEM	1	HPb58-3A OTTONE
5	ANELLO DI TENUITA SEALING RING	1	PTFE
6	DADO FIXING NUT	1	HPb58-3C OTTONE
7	MANIGLIA LEVEL HANDLE	1	FE ACCIAIO
8	VITE HEX NUT	1	Q235 NICKEL.PLATE ACCIAIO-ZINCATO

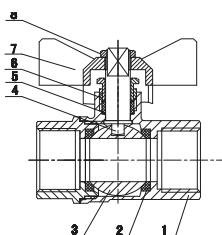
**ART. 304**

Valvola a sfera F.F., maniglia a farfalla, corpo in ottone nichelato. Temperatura d'esercizio min/max -20°C/150°C.

*F.F. ball valve, butterfly handle, body nickered brass.*



Codice/Code	Ø	A	B	C	D	E	F	Pressione kg/cm <sup>2</sup>	Conf./Pack	€ cad./€ each
1102028	1/2"	78	11,5	14	30	84	41	30 bar	16 160	4,25
1102029	3/4"	82,5	13	19	36	84	44,5	30 bar	12 120	5,80
1102030	1"	102	14	22,5	45,5	104,5	57	30 bar	10 80	8,95

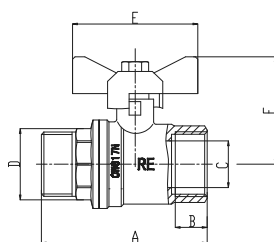
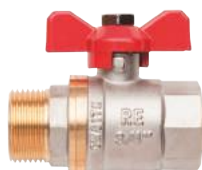


N° POS	DESCRIZIONE DESCRIPTION	Q.tà Q.ty	MATERIALE MATERIAL
1	BODY	1	CW617N OTTONE
2	SEAT	2	PTFE
3	BALL	1	HPb58-3A OTTONE
4	STEM	1	HPb58-3A OTTONE
5	SEALING RING	1	PTFE
6	FIXING NUT	1	HPb58-3C OTTONE
7	LEVEL HANDLE	1	FE ACCIAIO
8	HEX NUT	1	Q235 NICKEL-PLATE ACCIAIO-ZINCATO

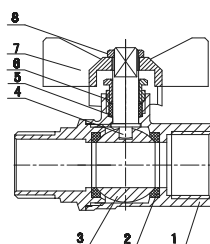
**ART. 306**

Valvola a sfera M.F., maniglia a farfalla, corpo in ottone nichelato. Temperatura d'esercizio min/max -20°C/150°C.

*M.F. ball valve, butterfly handle, body nickered brass.*



Codice/Code	Ø	A	B	C	D	E	F	Pressione kg/cm <sup>2</sup>	Conf./Pack	€ cad./€ each
1102228	1/2"	59	11,5	14	24,7	51	39,5	30 bar	16 160	4,50
1102229	3/4"	67,5	13	19	29,5	62	43	30 bar	12 120	6,30
1102230	1"	73,5	14	22,5	36	104,5	53,5	30 bar	10 80	9,75

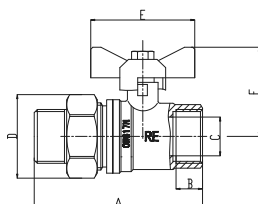


N° POS	DESCRIZIONE DESCRIPTION	Q.tà Q.ty	MATERIALE MATERIAL
1	BODY	1	CW617N OTTONE
2	SEAT	2	PTFE
3	BALL	1	HPb58-3A OTTONE
4	STEM	1	HPb58-3A OTTONE
5	SEALING RING	1	PTFE
6	FIXING NUT	1	HPb58-3C OTTONE
7	LEVEL HANDLE	1	FE ACCIAIO
8	HEX NUT	1	Q235 NICKEL-PLATE ACCIAIO-ZINCATO

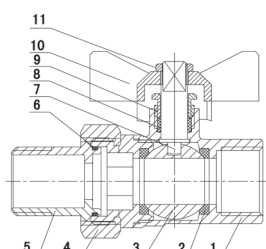
**ART. 308**

Valvola a sfera con bocchettone M.F., maniglia a farfalla, corpo in ottone nichelato. Temperatura d'esercizio min/max -20°C/150°C.

*M.F. ball valve, butterfly handle, body nickered brass.*



Codice/Code	Ø	A	B	C	D	E	F	Pressione kg/cm <sup>2</sup>	Conf./Pack	€ cad./€ each
1103028	1/2"	78	11,5	14	30	51	39,5	30 bar	10 100	6,30
1103029	3/4"	82,5	13	19	36	62	43	30 bar	12 96	8,74
1103030	1"	102	14	22,5	45,5	104,5	53,5	30 bar	6 48	15,30

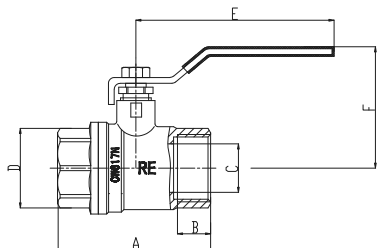
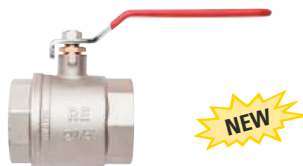


N° POS	DESCRIZIONE DESCRIPTION	Q.tà Q.ty	MATERIALE MATERIAL
1	BODY	1	CW617N OTTONE
2	SEAT	2	PTFE
3	BALL	1	HPb58-3A OTTONE
4	COUPLING NUT	1	CW617N OTTONE
5	PIPE JOINT	1	CW617N PTFE
6	SILICONE PAD	1	HTV OTTONE
7	STEM	1	HPb58-3C ACCIAIO
8	SEALING RING	1	PTFE ACCIAIO-ZINCATO
9	FIXING NUT	1	PTFE OTTONE
10	BUTTERFLY HANDLE	1	AI ACCIAIO-ZINCATO
11	HEX NUT	1	Q235NICKEL-PLATE OTTONE

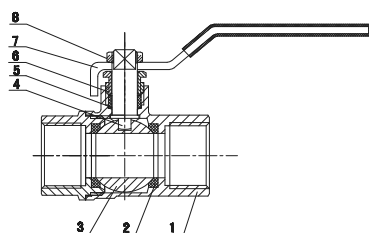
**ART. 320**

Valvola a sfera F.F., maniglia piatta in acciaio, corpo in ottone nichelato. Temperatura d'esercizio min/max -20°C/150°C.

*F.F. ball valve, with flat handle, body nicked brass.*



Codice/Code	Ø	A (mm)	B (mm)	C (mm)	D (mm)	E (mm)	F (mm)	Pressione kg/cm <sup>2</sup>	Conf./Pack		€ cad./€ each
1100068	1/2"	51	11,5	14	24,7	79	41	30 bar	16	160	4,70
1100069	3/4"	60	13	19	29,5	79	44,5	30 bar	12	120	6,25
1100070	1"	65	14	22,5	36	104	57	30 bar	10	80	9,30
1100071	1 1/4"	78	14,5	30	46	104	63	20 bar	8	32	14,20
1100072	1 1/2"	83	15,5	35	52,5	166	80	20 bar	6	24	21,30
1100073	2"	98	16,5	45	65	166	86	20 bar	2	16	33,20
1100074	2 1/2"	123,5	19	59	82,5	200	105	16 bar	2	6	72,00
1100075	3"	154	22	73	100	236	130	16 bar	2	4	117,00
1100077	4"	177	24	95	126	236	144	16 bar	2	2	194,00

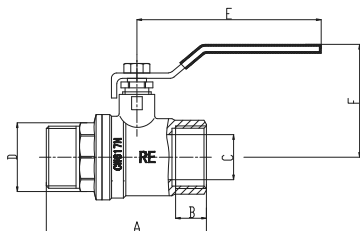


N° POS	DESCRIZIONE DESCRIPTION	Q.tà Q.tY	MATERIALE MATERIAL
1	CORPO BODY	1	CW617N OTTONE
2	SEDE SEAT	2	PTFE
3	SFERA BALL	1	HPb58-3A OTTONE
4	ASTA DI MANOVRA STEM	1	HPb58-3A OTTONE
5	ANELLO DI TENUTA SEALING RING	1	PTFE
6	DADO FIXING NUT	1	HPb58-3C OTTONE
7	MANIGLIA LEVEL HANDLE	1	FE ACCIAIO
8	VITE HEX NUT	1	Q235 NICKEL.PLATE ACCIAIO-ZINCATO

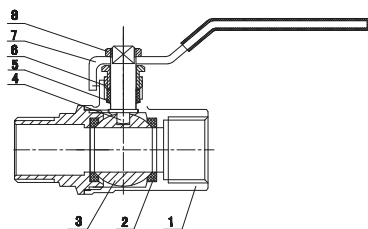
**ART. 322**

Valvola a sfera M.F., maniglia piatta in acciaio, corpo in ottone nichelato. Temperatura d'esercizio min/max -20°C/150°C.

*M.F. ball valve, steel flat handle, body nicked brass.*



Codice/Code	Ø	A (mm)	B (mm)	C (mm)	D (mm)	E (mm)	F (mm)	Pressione kg/cm <sup>2</sup>	Conf./Pack		€ cad./€ each
1100268	1/2"	59	11,5	14	21,5	79	41	30 bar	16	160	5,00
1100269	3/4"	67,5	13	19	27,5	79	44,5	30 bar	12	96	6,80
1100270	1"	73,5	14	22,5	35	104	57	30 bar	10	80	10,50
1100271	1 1/4"	89,5	14,5	30	43	104	63	20 bar	8	32	15,80
1100272	1 1/2"	99	15,5	35	50	166	80	20 bar	6	24	23,40
1100273	2"	116,5	16,5	45	64	166	86	20 bar	2	16	37,00



N° POS	DESCRIZIONE DESCRIPTION	Q.tà Q.tY	MATERIALE MATERIAL
1	CORPO BODY	1	CW617N OTTONE
2	SEDE SEAT	2	PTFE
3	SFERA BALL	1	HPb58-3A OTTONE
4	ASTA DI MANOVRA STEM	1	HPb58-3A OTTONE
5	ANELLO DI TENUTA SEALING RING	1	PTFE
6	DADO FIXING NUT	1	HPb58-3C OTTONE
7	MANIGLIA LEVEL HANDLE	1	FE ACCIAIO
8	VITE HEX NUT	1	Q235 NICKEL.PLATE ACCIAIO-ZINCATO

**ART. 350**

Valvola a sfera mini FF, leva in alluminio, vite inox.

*FF mini ball valve aluminium handle, ss screw.*



Codice/Code	Ø	Conf./Pack	€ cad./€ each
1104006	FF 1/4"	10 250	3,40
1104007	FF 3/8"	10 250	3,20
1104008	FF 1/2"	10 200	3,80

**ART. 352**

Valvola a sfera mini MF, leva in alluminio, vite inox.

*MF mini ball valve, aluminium handle, ss screw.*



Codice/Code	Ø	Conf./Pack	€ cad./€ each
1104206	MF 1/4"	10 250	3,20
1104207	MF 3/8"	10 250	3,10
1104208	MF 1/2"	10 200	3,70
1104209	MF 3/4"	10 200	6,00

**ART. 370**

Valvola a sfera a leva a passaggio totale in ottone sbiancato FF.  
FF white brass total passage ball valve.

Codice Code	Ø	Conf. Pack	€ cad. € each
1100006	1/4"	10	4,85
1100007	3/8"	10	4,95
1100008	1/2"	10	6,10
1100009	3/4"	10	8,80
1100010	1"	6	13,40
1100011	1"1/4	6	21,50
1100012	1"1/2	6	32,00
1100013	2"	4	49,00
1100014	2"1/2	4	114,00
1100015	3"	2	179,00
1100017	4"	1	291,00

**ART. 371**

Valvola a sfera a leva a passaggio totale in ottone sbiancato MF.  
MF white brass total passage ball valve.

Codice Code	Ø	Conf. Pack	€ cad. € each
1100206	1/4"	10	5,30
1100207	3/8"	10	5,50
1100208	1/2"	10	6,70
1100209	3/4"	10	9,70
1100210	1"	6	14,50
1100211	1"1/4	6	24,00
1100212	1"1/2	6	35,00
1100213	2"	4	52,20
1100214	2"1/2	4	168,70
1100215	3"	2	252,00
1100217	4"	1	436,00

**ART. 372**

Valvola a sfera a farfalla FF.  
Ball valve.

Codice Code	Ø	Conf. Pack	€ cad. € each
1102007	3/8"	10	4,90
1102008	1/2"	10	6,00
1102009	3/4"	10	8,60
1102010	1"	6	13,30
1102011	1"1/4	4	21,80

**ART. 373**

Valvola a sfera a farfalla MF.  
Ball valve.

Codice Code	Ø	Conf. Pack	€ cad. € each
1102207	3/8"	10	5,50
1102208	1/2"	10	6,70
1102209	3/4"	10	9,60
1102210	1"	6	14,30
1102211	1"1/4	4	24,00

**ART. 374**

Valvola sfera con bocchettone MF.  
MF pipe union ball valve.

Codice Code	Ø	Conf. Pack	€ cad. € each
1103008	1/2"	10	8,10
1103009	3/4"	10	12,00
1103010	1"	6	19,00
1103011	1"1/4	4	29,50

**ART. 375**

Valvola a sfera 3 vie T, a richiesta a L.  
T-shaped 3 way ball valve. L-shaped valve upon demand.

Codice Code	Ø	Conf. Pack	€ cad. € each
1102608	1/2"	10	30,00
1102609	3/4"	5	45,50
1102610	1"	4	67,00
1102611	1"1/4	3	105,00
1102612	1"1/2	2	146,00
1102613	2"	1	220,00

**ART. 376**

Valvola ecologica a sfera a passaggio totale in ottone cromato per acqua potabile FF.  
Ecologic FF ball valve for drinkable water.

Codice Code	Ø	Conf. Pack	€ cad. € each
1100406	1/4"	12	5,70
1100407	3/8"	12	6,10
1100408	1/2"	15	8,20
1100409	3/4"	8	11,00
1100410	1"	8	16,90
1100411	1"1/4	4	30,30
1100412	1"1/2	4	47,00
1100413	2"	2	66,00

ACQUA POTABILE  
MANIGLIA VERDE  
ANTILEGIONELLA

**ART. 377**

Valvola ecologica a sfera a passaggio totale in ottone cromato per acqua potabile MF.  
Ecologic MF ball valve for drinkable water.

Codice Code	Ø	Conf. Pack	€ cad. € each
1100416	1/4"	12	6,20
1100417	3/8"	12	6,70
1100418	1/2"	15	8,90
1100419	3/4"	8	11,70
1100420	1"	8	18,00
1100421	1"1/4	4	32,00
1100422	1"1/2	4	48,50
1100423	2"	2	68,00

ACQUA POTABILE  
MANIGLIA VERDE  
ANTILEGIONELLA

**ART. 378**

Valvola ecologica a sfera FF a passaggio totale in ottone cromato per acqua potabile con leva a farfalla.  
Ecologic FF butterfly ball valve for drinkable water.

Codice Code	Ø	Conf. Pack	€ cad. € each
1100506	1/4"	15	5,70
1100507	3/8"	15	6,00
1100508	1/2"	10	8,20
1100509	3/4"	8	11,00
1100510	1"	6	17,00

ACQUA POTABILE  
MANIGLIA VERDE  
ANTILEGIONELLA

**ART. 379**

Valvola ecologica a sfera MF a passaggio totale in ottone cromato per acqua potabile con leva a farfalla.  
Ecologic MF butterfly ball valve for drinkable water.

Codice Code	Ø	Conf. Pack	€ cad. € each
1100516	1/4"	15	6,10
1100517	3/8"	15	6,60
1100518	1/2"	10	8,80
1100519	3/4"	8	11,60
1100520	1"	6	18,00

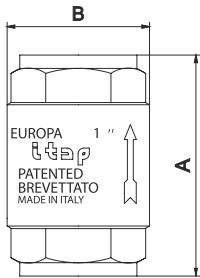
ACQUA POTABILE  
MANIGLIA VERDE  
ANTILEGIONELLA

**ART. 380**

Valvola di ritegno a molla  
EUROPA originale.  
*Original EUROPA check valve.*



Corpo in ottone, piattello in acciaio inox, tenuta in NBR, perno guida in ottone, molla in acciaio inox, temperature minima e massima di esercizio: -20°C/100°C, attacchi filettati: ISO228 (equivalente a DIN EN ISO 228 e BS EN ISO 228)



Codice/Code	Ø	A	B	Pressione kg/cm <sup>2</sup>	Pressione psi	Conf./Pack		€ cad./€ each
2320207	3/8"	55	34,5	25 bar	360	10	170	6,90
2320208	1/2"	58,5	34,5			10	170	7,10
2320209	3/4"	65	41,5			10	120	9,60
2320210	1"	74,5	48			10	78	13,00
2320211	1"1/4	83	60,5	18 bar	260	4	48	20,90
2320212	1"1/2	93	71			4	36	28,00
2320213	2"	101	87			2	24	43,50
2320214	2"1/2	122	120	12 bar	170	2	12	100,00
2320215	3"	141,5	140,5			2	8	150,00
2320217	4"	158,5	172,5			2	5	246,00

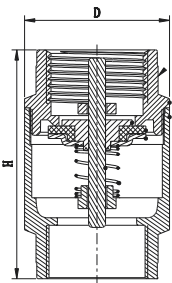
**ART. 381**

Valvola di ritegno a molla BETTER.  
*Universal check valve.*



Corpo in ottone, tenuta NBR, molla in acciaio inox 304, temperatura massima di esercizio 100°C, pressione di apertura 0,03 bar

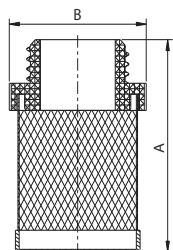
*Body in hot pressed brass, seal in NBR, spring in stainless steel AISI 304, max working temperature 100°C, opening pressure 0,03 bar.*



Codice/Code	Ø	PN	D	H	Conf./Pack		€ cad./€ each
2320227	3/8"	25	34,5	54	15	90	5,20
2320228	1/2"	25	34,5	57	15	90	5,40
2320229	3/4"	25	42	64	12	48	7,40
2320230	1"	25	47,5	75	9	36	10,50
2320231	1"1/4	16	60,5	83	6	24	16,30
2320232	1"1/2	16	71	93	2	8	23,10
2320233	2"	16	87	100	2	8	34,60
2320234	2"1/2	10	119	120	1	6	74,50
2320235	3"	10	140	140	1	4	114,00
2320237	4"	10	154	158	1	3	178,00

**ART. 382**

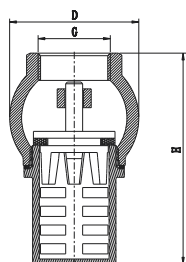
Filtro per valvola EUROPA.  
*EUROPA valve filter.*



Codice/Code	Ø	A	B	Grado di filtrazione	Conf./Pack		€ cad./€ each
2320407	3/8"	42	22,5	1200 µm	30	648	1,06
2320408	1/2"	39	27,5		56	224	1,08
2320409	3/4"	39,5	34,5		38	152	1,25
2320410	1"	51	40,5		20	80	1,40
2320411	1"1/4	56,5	48,5		9	36	1,90
2320412	1"1/2	64,5	58		6	24	2,40
2320413	2"	77,5	69		4	16	3,05
2320414	2"1/2	97	83,5	2000 µm	1	25	6,00
2320415	3"	107	94		1	16	7,30
2320417	4"	119	126,5		1	6	10,00

**ART. 383**

Valvola di fondo in ottone.  
Brass back valve.




Corpo in ottone, filtri in ottone, piattello in ottone, tenuta NBR, guarnizione in fibra, temperatura massima di esercizio 100°C.

Body in casting brass, disc in hot pressed brass seal in NBR, fiber gasket, max working temperature 100°C.

Codice/Code	Ø	PN	D	H	Conf./Pack		€ cad./€ each
2321408	1/2"	16	38	62	15	60	5,50
2321409	3/4"	16	44	68	12	48	6,30
2321410	1"	16	48	76	6	36	7,60
2321411	1"1/4	16	57	95	5	20	12,20
2321412	1"1/2	16	66	101,5	3	12	16,50
2321413	2"	16	77	116	2	8	25,20
2321414	2"1/2	16	86	139,5	1	8	34,30
2321415	3"	16	111	148,5	1	8	54,00

**ART. 384**

Valvola di fondo tubolare in ottone.  
Brass tubular back valve.



Codice/Code	Ø	Conf./Pack	€ cad./€ each
2321009	3/4"	10	11,00
2321010	1"	10	13,70
2321011	1"1/4	5	20,00
2321012	1"1/2	5	24,00
2321013	2"	2	35,00

**ART. 385**

Valvola di ritegno Roma.  
Roma check valve.



Codice/Code	Ø	Conf./Pack	€ cad./€ each
2321208	1/2"	1	11,00
2321209	3/4"	1	13,80
2321210	1"	1	19,00
2321211	1"1/4	1	25,60

**ART. 386**

Valvola antisabbia tipo FIAT.  
FIAT anti-sand valve.

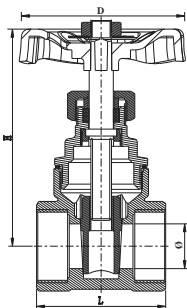


Codice/Code	Ø	Conf./Pack	€ cad./€ each
2321610	1"	1	25,00
2321611	1"1/4	1	36,30
2321612	1"1/2	1	59,00
2321613	2"	1	85,00

**ART. 387**

Saracinesca corpo in ottone, volante in acciaio, guarnizione in PFTE.

Brass gate valve, body in hot pressed brass, handle-wheel in iron, PTFE Fiber gasket.

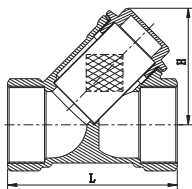



Codice/Code	Ø	PN	L	D	H	Conf./Pack		€ cad./€ each
						⊗	⊞	
1107008	1/2"	16	37,5	50	65,5	12	48	4,80
1107009	3/4"	16	41	50	66	12	48	5,70
1107010	1"	16	44,5	59	76	8	32	8,00
1107011	1"1/4	16	50,5	59	90,5	4	24	12,30
1107012	1"1/2	16	51	70	97	3	12	16,00
1107013	2"	16	61	70	120	2	8	27,50
1107014	2"1/2	16	66	98	156,5	1	10	48,00
1107015	3"	16	84	109	184	1	8	70,00
1107017	4"	16	81,6	131	227,5	1	4	125,00

**ART. 388**

Filtro raccogliatore impurità, corpo in ottone, guarnizione in PTFE, filtro in acciaio inox AISI 304 mcr 500, temperatura max di esercizio 100°C.

Steve brass filter, body in hot pressed brass, PTFE fiber gasket, filter in stainless steel AISI 304 mcr 500, max working temperature=100°C.

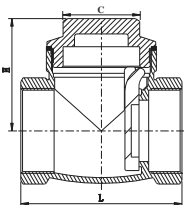



Codice/Code	Ø	PN	L	H	Conf./Pack		€ cad./€ each
					⊗	⊞	
2322408	1/2"	16	56,5	40	12	72	3,95
2322409	3/4"	16	66	46	10	40	6,20
2322410	1"	16	74	52	9	36	8,50
2322411	1"1/4	16	96	65	4	16	16,90
2322412	1"1/2	16	104	72	2	12	21,20
2322413	2"	16	125	91	1	8	36,50

**ART. 389**

Valvola a clapet tenuta metallica, corpo in ottone, guarnizione in fibra, temperatura massima di esercizio 100°C, pressione di apertura=0,03 bar.

Metal seat clapet valve, body in hot pressed brass, fiber gasket, max working temperature=100°C, opening pressure=0,03 bar.

Codice/Code	Ø	C hexagon diameters	L	H	Conf./Pack		€ cad./€ each
					⊗	⊞	
2321808	1/2"	22	48	33,5	12	72	5,50
2321809	3/4"	26	52	40	10	60	7,60
2321810	1"	26,5	63	44,5	8	24	11,00
2321811	1"1/4	34	74	52	5	20	17,30
2321812	1"1/2	40	86	63,5	4	16	21,00
2321813	2"	49	98	66,5	1	8	36,00
2321814	2"1/2		120	80	1	5	58,00
2321815	3"		135	92	1	7	90,00