

BISAZZA

PREVIEW 2018

**Introducing
MARMO**

NEW PRODUCTS

Greg Natale

Marcel Wanders

David Rockwell

Fernando & Humberto Campana

NEW PROJECTS

Shigeru Ban

India Mahdavi

Fondazione Bisazza

ARAKI

Bisazza

36075 Alte, Vicenza Italia
Tel. +39 0444 707511
www.bisazza.com

PREVIEW 2018



MARMO

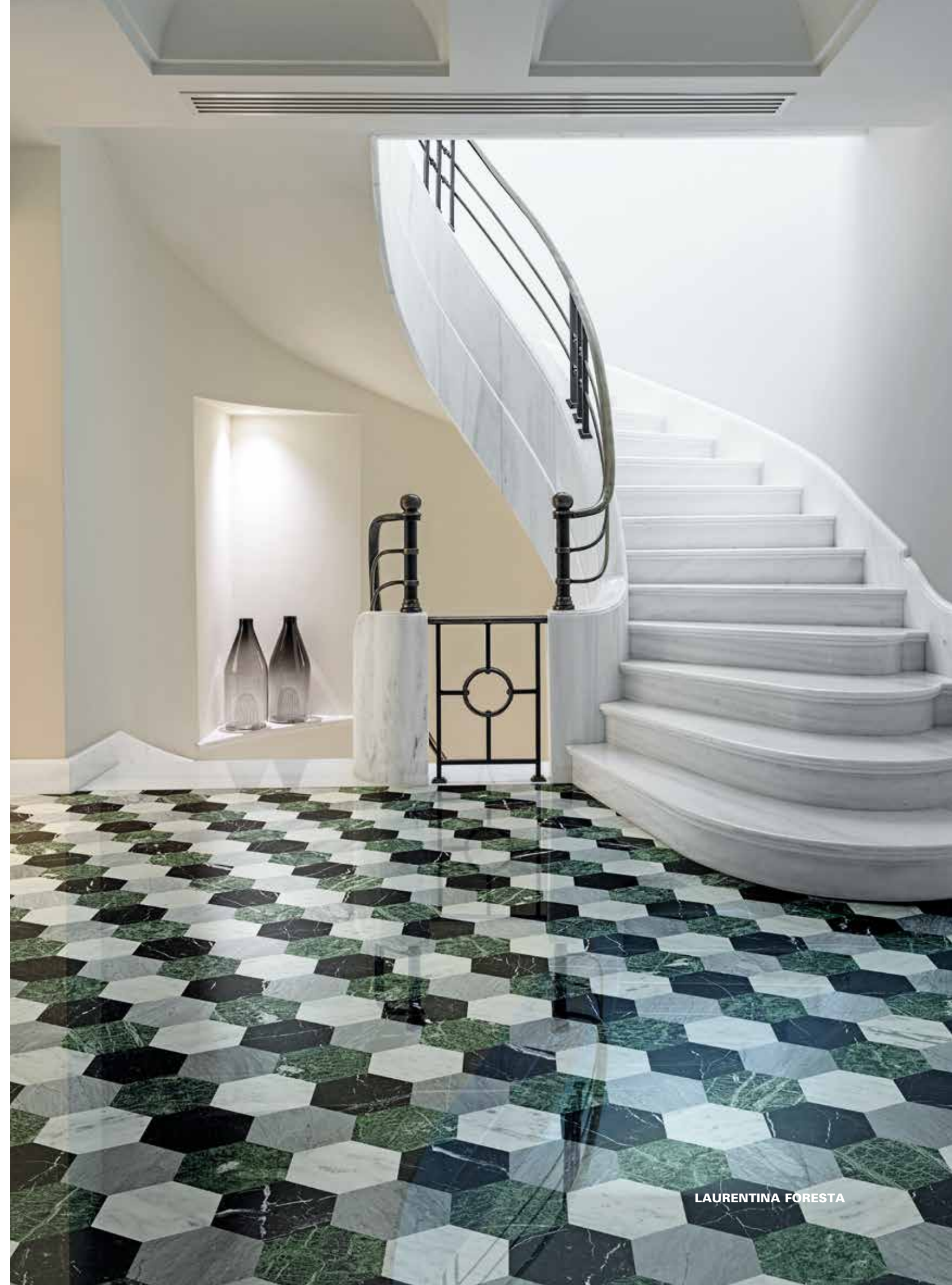
La proposta Bisazza per i pavimenti si arricchisce della nuova collezione Marmo. In linea con la sua vocazione decorativa, Bisazza propone una serie di pattern ispirati alla tradizione dei pavimenti lapidei policromi, rivisitati in chiave contemporanea. Quadrati, esagoni, triangoli e trapezi si compongono in disegni bicolore, o in decori dall'effetto tridimensionale.

The Bisazza flooring range now includes the new Marmo collection. In line with its vocation for decoration, Bisazza offers a series of patterns inspired by the tradition of polychrome stone flooring, seen in a contemporary light. Squares, hexagons, triangles and trapezoids come together in two-tone patterns and decorative pieces with a 3D look.





NOMENTANA GIADA



LAURENTINA FORESTA





FLAMINIA POMPEI



SALARIA MIELE

NEW PRODUCTS



DAVID ROCKWELL

Il designer americano David Rockwell firma per la collezione Cementiles una nuova linea di decori, declinati nelle tonalità cromatiche del grigio, blu, greige e ruggine.

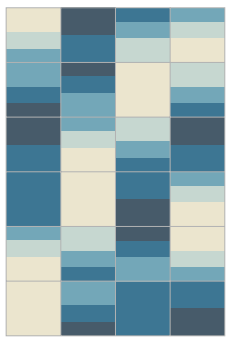
“La luce è un elemento critico in tutti i lavori che solitamente realizzo, sia come architetto che come scenografo teatrale. Nella nuova collezione disegnata per Bisazza, ho esplorato l’idea di come la luce riuscisse a trasformare le superfici e gli ambienti. Abbiamo realizzato una serie di piastrelle declinate in diverse tonalità cromatiche che, generando dei pattern dall’effetto sfuocato, suggeriscono un senso di profondità, ondulazione e vivacità.”

American designer David Rockwell has developed a new line of decorative patterns for the Bisazza Cementiles collection using hues of grey, blue, greige and rust.

“Light is a critical element in all the work I do as an architect and theatre set designer. So in my new collection for Bisazza I explored the idea of how light transforms surfaces and environments. We created a series of multi tone tiles that generate ombré patterns suggesting a sense of depth, undulation and vibrancy.”

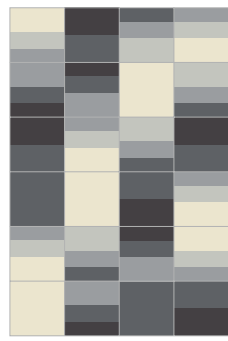






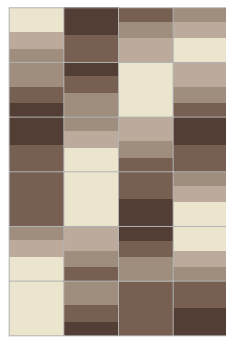
New Prussia, Atlantico, Turchino, Cilestrino, Latte

SWING INDIGO



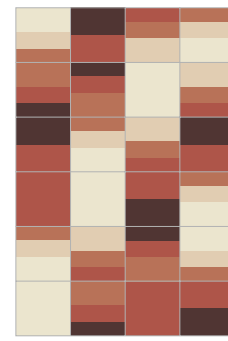
Liquirizia, Asfalto, Macadam, Nebbia, Latte

SWING CHARCOAL



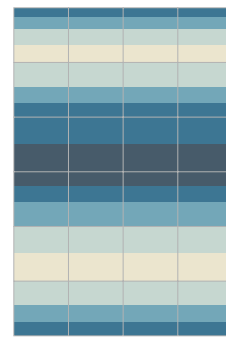
Cioccolato, Tabacco, Écru, Corda, Latte

SWING SEPIA



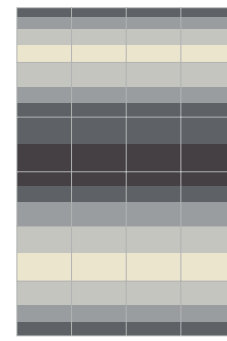
Porfido, Diaspro, Ruggine, Tan, Latte

SWING RUST



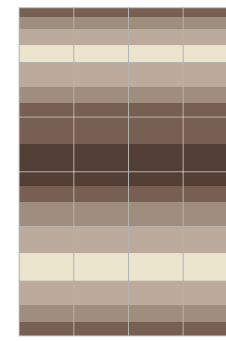
New Prussia, Atlantico, Turchino, Cilestrino, Latte

FADE INDIGO



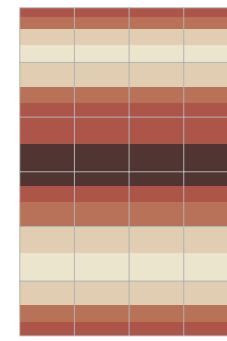
Liquirizia, Asfalto, Macadam, Nebbia, Latte

FADE CHARCOAL



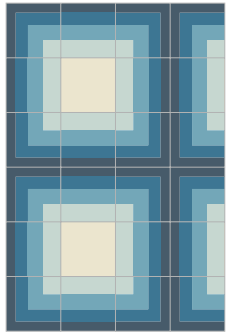
Cioccolato, Tabacco, Écru, Corda, Latte

FADE SEPIA



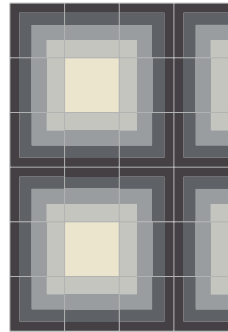
Porfido, Diaspro, Ruggine, Tan, Latte

FADE RUST



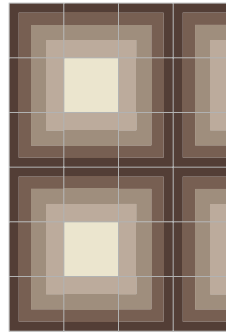
New Prussia, Atlantico, Turchino, Cilestrino, Latte

MAZE INDIGO



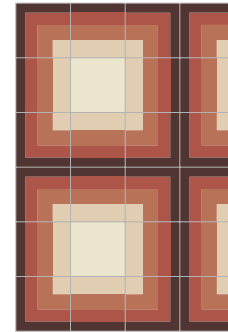
Liquirizia, Asfalto, Macadam, Nebbia, Latte

MAZE CHARCOAL



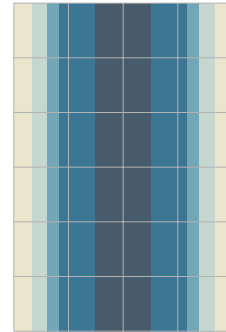
Cioccolato, Tabacco, Écru, Corda, Latte

MAZE SEPIA



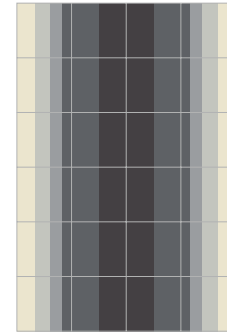
Porfido, Diaspro, Ruggine, Tan, Latte

MAZE RUST



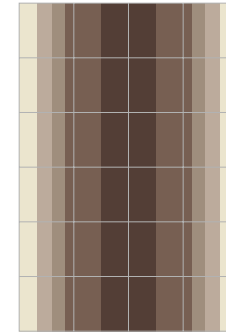
New Prussia, Atlantico, Turchino, Cilestrino, Latte

RUN INDIGO



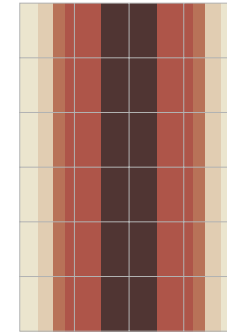
Liquirizia, Asfalto, Macadam, Nebbia, Latte

RUN CHARCOAL



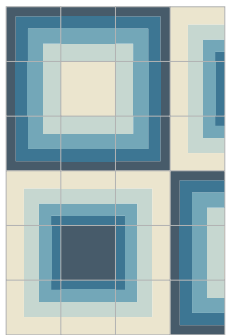
Cioccolato, Tabacco, Écru, Corda, Latte

RUN SEPIA



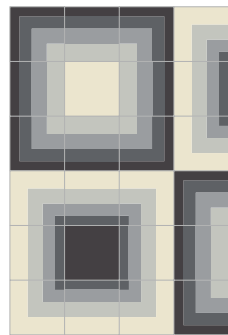
Porfido, Diaspro, Ruggine, Tan, Latte

RUN RUST



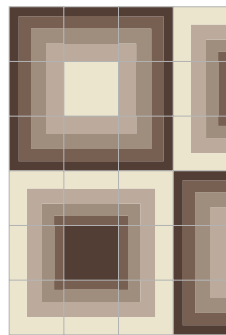
New Prussia, Atlantico, Turchino, Cilestrino, Latte

HOP INDIGO



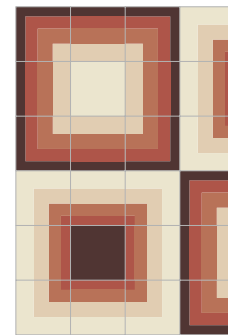
Liquirizia, Asfalto, Macadam, Nebbia, Latte

HOP CHARCOAL



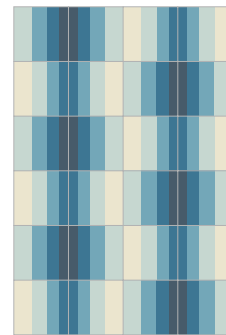
Cioccolato, Tabacco, Écru, Corda, Latte

HOP SEPIA



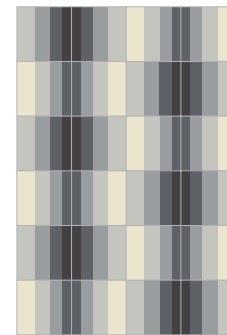
Porfido, Diaspro, Ruggine, Tan, Latte

HOP RUST



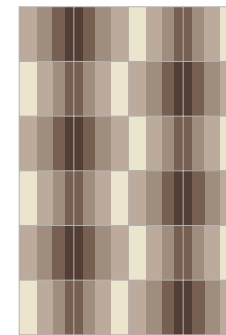
New Prussia, Atlantico, Turchino, Cilestrino, Latte

SKIP INDIGO



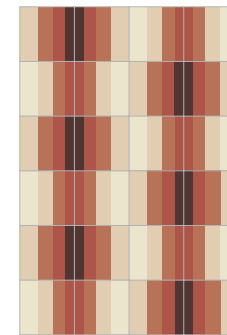
Liquirizia, Asfalto, Macadam, Nebbia, Latte

SKIP CHARCOAL



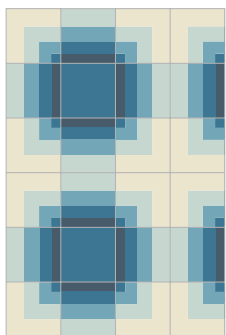
Cioccolato, Tabacco, Écru, Corda, Latte

SKIP SEPIA



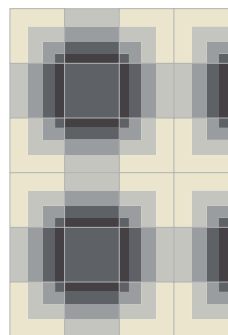
Porfido, Diaspro, Ruggine, Tan, Latte

SKIP RUST



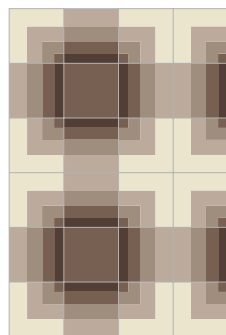
New Prussia, Atlantico, Turchino, Cilestrino, Latte

JUMP INDIGO



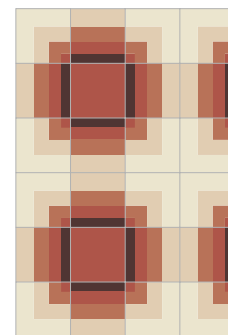
Liquirizia, Asfalto, Macadam, Nebbia, Latte

JUMP CHARCOAL



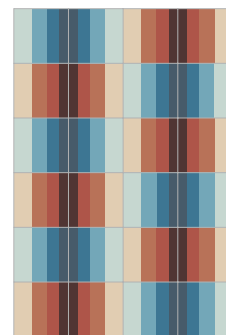
Cioccolato, Tabacco, Écru, Corda, Latte

JUMP SEPIA



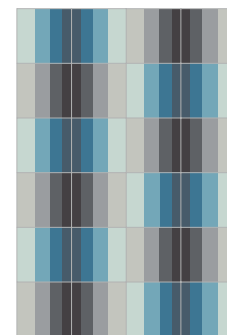
Porfido, Diaspro, Ruggine, Tan, Latte

JUMP RUST



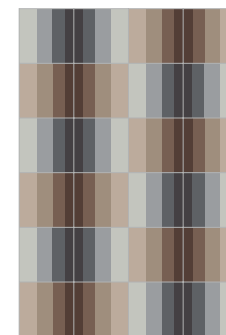
New Prussia, Atlantico, Turchino, Cilestrino, Porfido, Diaspro, Ruggine, Tan

PASS HORIZON



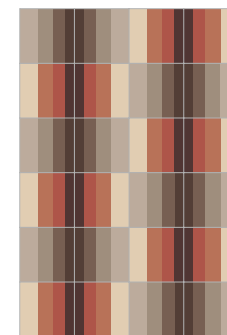
New Prussia, Atlantico, Turchino, Cilestrino, Liquirizia, Asfalto, Macadam, Nebbia

PASS LAKES



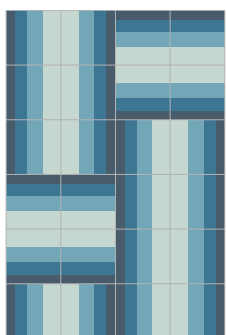
Cioccolato, Tabacco, Écru, Corda, Liquirizia, Asfalto, Macadam, Nebbia

PASS MOUNTAIN



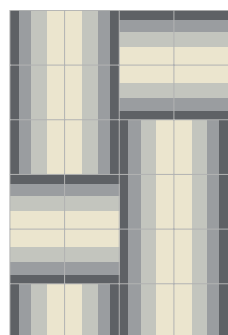
Cioccolato, Tabacco, Écru, Corda, Porfido, Diaspro, Ruggine, Tan

PASS DESERT



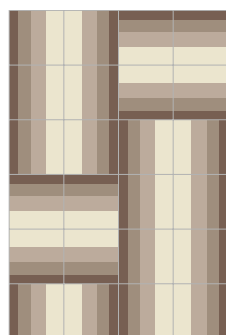
New Prussia, Atlantico, Turchino, Cilestrino

LEAP INDIGO



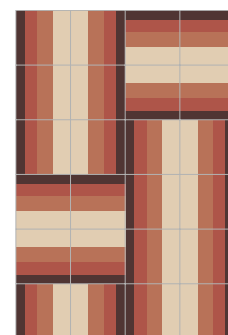
Asfalto, Macadam, Nebbia, Latte

LEAP CHARCOAL



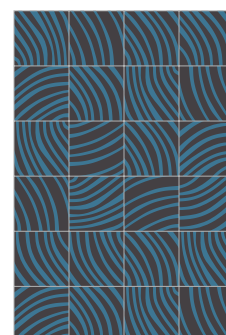
Tabacco, Écru, Corda, Latte

LEAP SEPIA



Porfido, Diaspro, Ruggine, Tan

LEAP RUST



Atlantico, Liquirizia

END GRAIN OCEAN



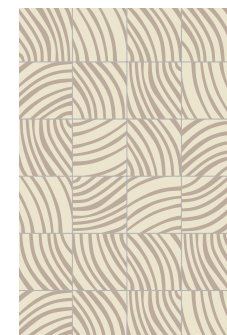
Latte, Liquirizia

END GRAIN B&W



Argento, Fango

END GRAIN CLOUD



Latte, Corda

END GRAIN SAND



FERNANDO & HUMBERTO CAMPANA

Bisazza Cementiles, la collezione di piastrelle in cemento realizzate a mano, si arricchisce di un nuovo pattern, Brazilian Agata, disegnato dai fratelli brasiliani Fernando e Humberto Campana.

“Per questo progetto ci siamo ispirati ad una pietra brasiliana, la geode di agata. Abbiamo voluto creare un dialogo tra i vari strati presenti all’interno della pietra e le diverse spirali che caratterizzano la nostra serie Sushi, così da ottenere una collezione colorata e versatile adatta a qualsiasi ambiente. La ricchezza del Brasile e l’immenso valore dei cristalli pietrificati in un’immagine iconica, interpretata nel decoro Brazilian Agata.”

Brazilian designers Fernando and Humberto Campana design Brazilian Agata, a new hand-made cement tile pattern for Bisazza Cementiles collection.

“For this project we were inspired by the Brazilian agate geode stone. We wanted to create a dialogue between the layers found in the interior of the rock and the swirls of our Sushi series to compose a colourful and versatile collection that can be applied in vast array of environments. The richness of Brazil and the immense fortune of crystals petrified in an icon image which became a tile.”



BRAZILIAN AGATA VERDE



BRAZILIAN AGATA ROSSA





GREG NATALE

Dalla collaborazione con il designer australiano Greg Natale, nascono quattro nuovi decori, realizzati in tessere di mosaico di vetro.

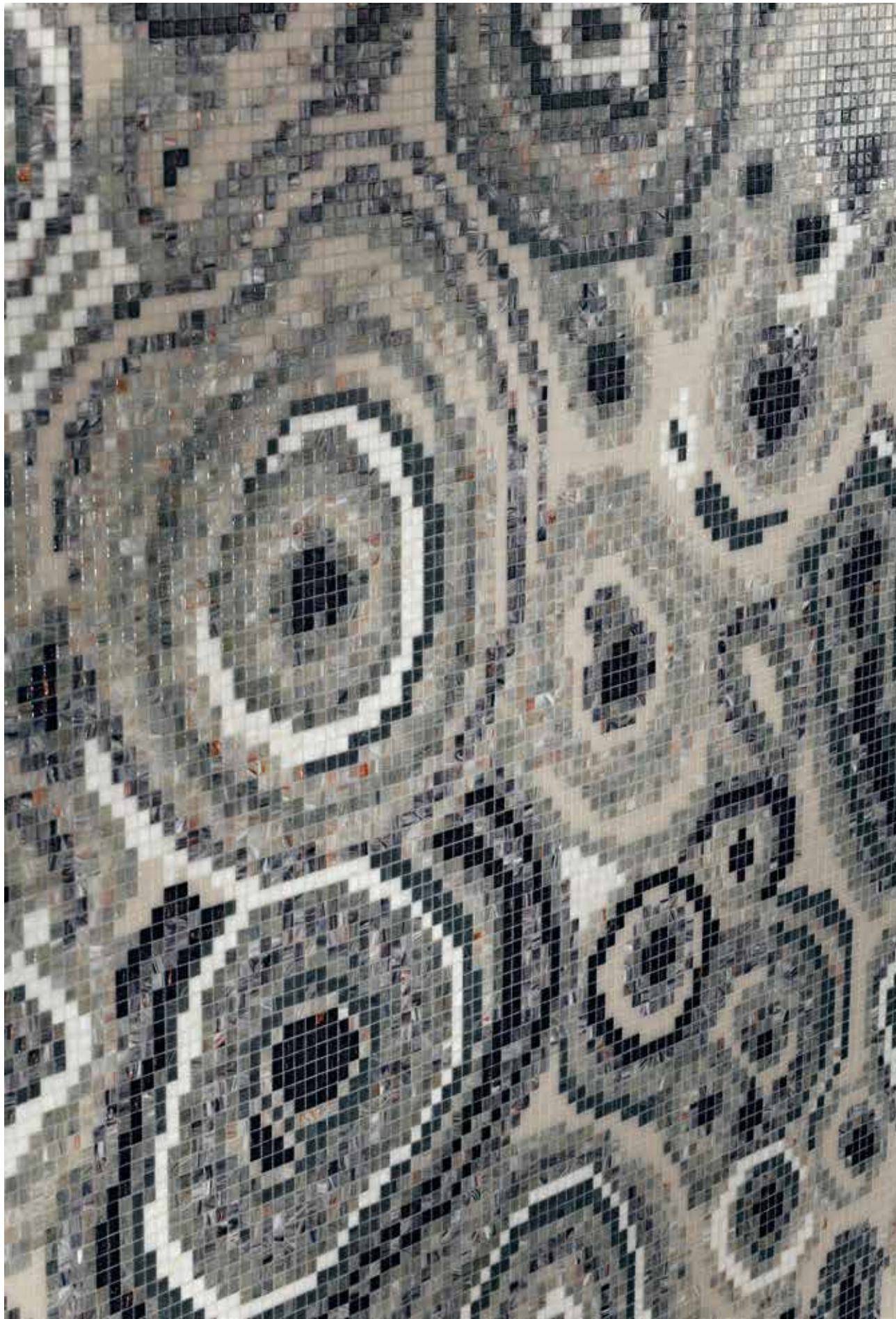
“Si potrebbe associare il mio linguaggio estetico alla simmetria e ad un grafismo geometrico originale, tuttavia ho sempre pensato che quando si lavora ad un decoro, forme organiche e geometriche devono coesistere, in modo da ottenere un effetto sorprendente. Per questo sono entusiasta di presentare questa serie di pattern, ispirati alla natura, realizzati in collaborazione con Bisazza.

Con questa collezione ho voluto esplorare il modo in cui dei motivi così irregolari e casuali, potessero essere riprodotti, in modo ben definito, attraverso un mezzo lineare e invariabile come le tessere quadrate del mosaico.”

Australian designer Greg Natale creates four new glass mosaic tile patterns.

“People might associate my aesthetic with symmetry and bold geometrics, but I have always believed that when working with pattern, organics and geometrics need to sit side-by-side to have optimal effect, so I am thrilled to be presenting this range of organic designs with Bisazza.

In this collection I wanted to explore how motifs that are so wild, uneven and random could be reinterpreted, attractively, within a medium as linear and unvarying as sheeted mosaic square tiles.”

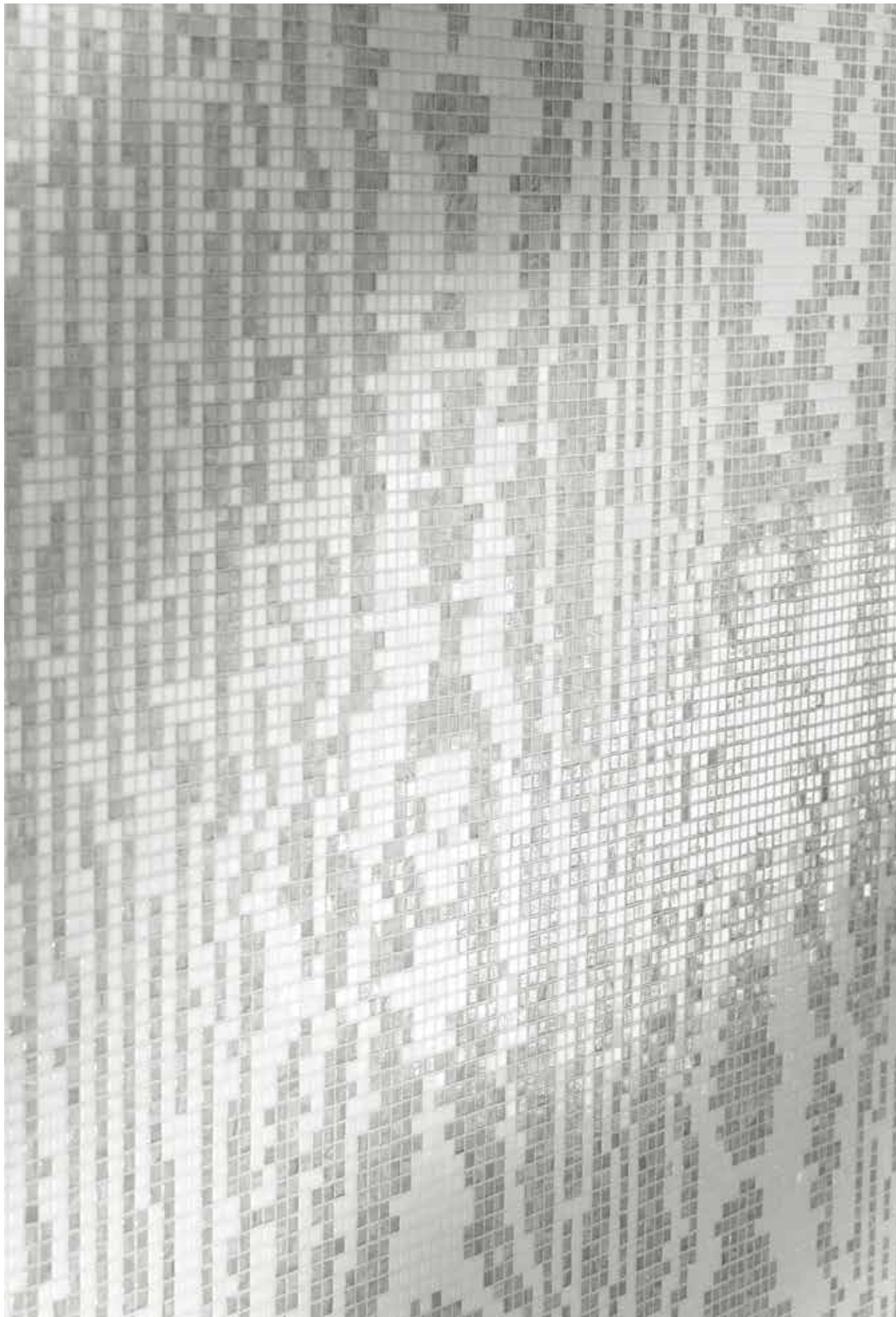


NEW MALACHITE GREY



NEW MALACHITE GREEN





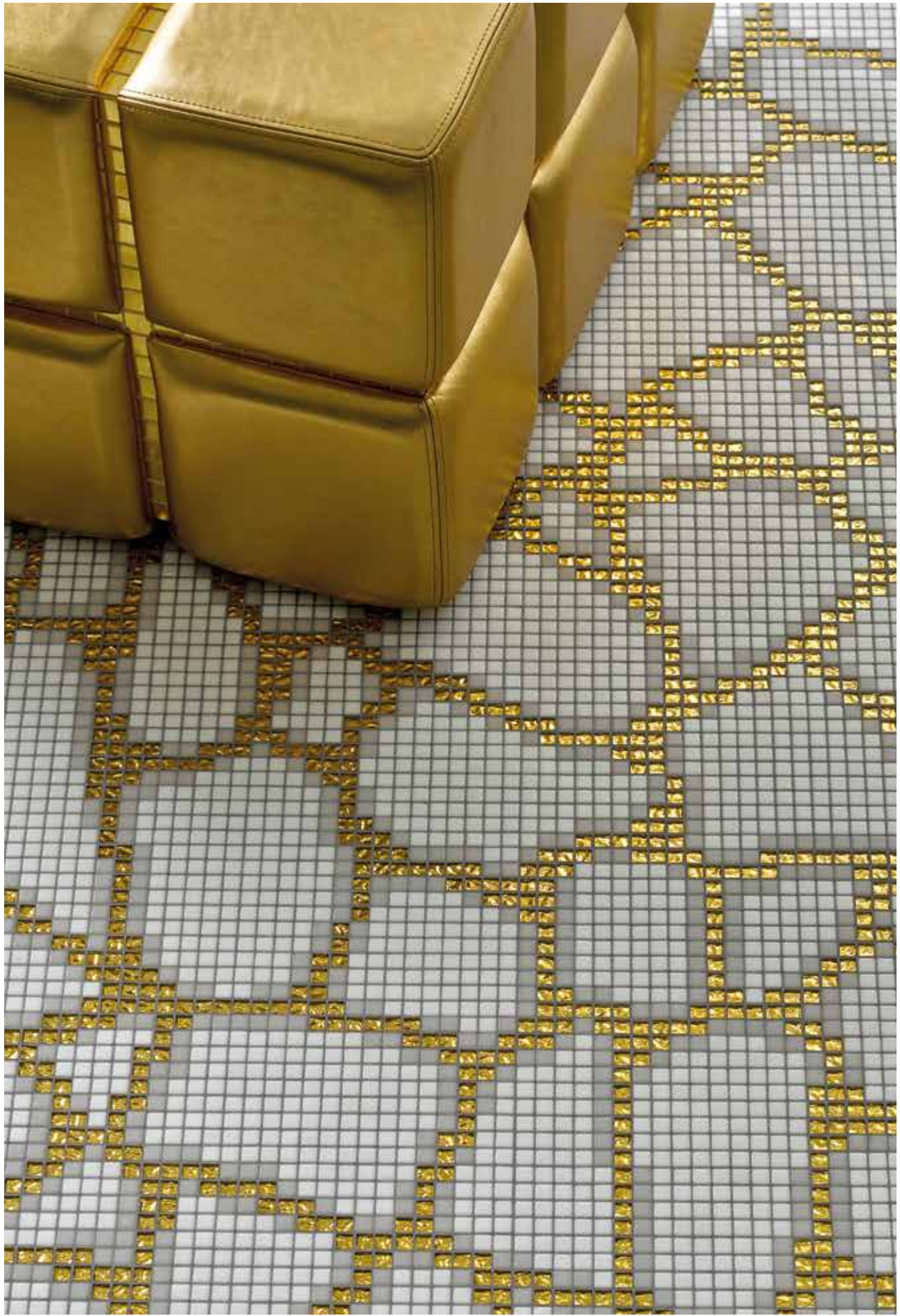
MOIRE WHITE



MOIRE BLACK



FRAGMENT GREY



FRAGMENT GOLD



MARCEL WANDERS

Pyramid Blue é il nuovo pattern in mosaico, firmato per Bisazza dal designer olandese Marcel Wanders. Tessere dalle tonalità azzurre e blu cobalto, intrecciate con quelle grigie e nere, creano un originale effetto tridimensionale.

Pyramid Blue is a new mosaic pattern created for Bisazza by Dutch designer Marcel Wanders. Light blue and cobalt blue mosaic alternate with grey and black tiles to create an original 3D effect.



NEW PROJECTS



SEINE MUSICALE

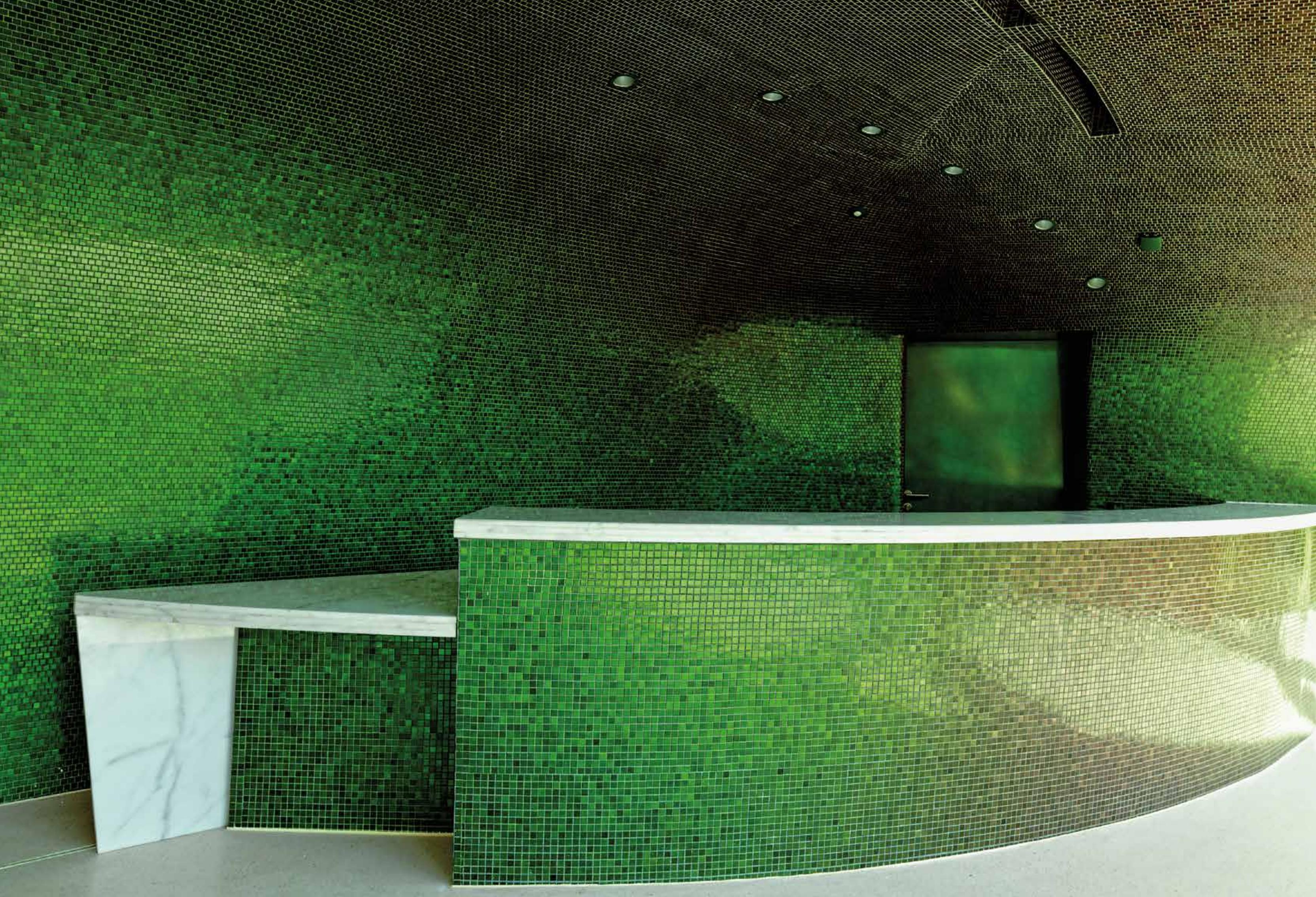
Nove milioni di tessere in mosaico Bisazza impreziosiscono la cupola e il foyer dell'auditorium de La Seine Musicale, recentemente inaugurata a Parigi, firmata dall'architetto Shigeru Ban, vincitore del premio Pritzker nel 2014.

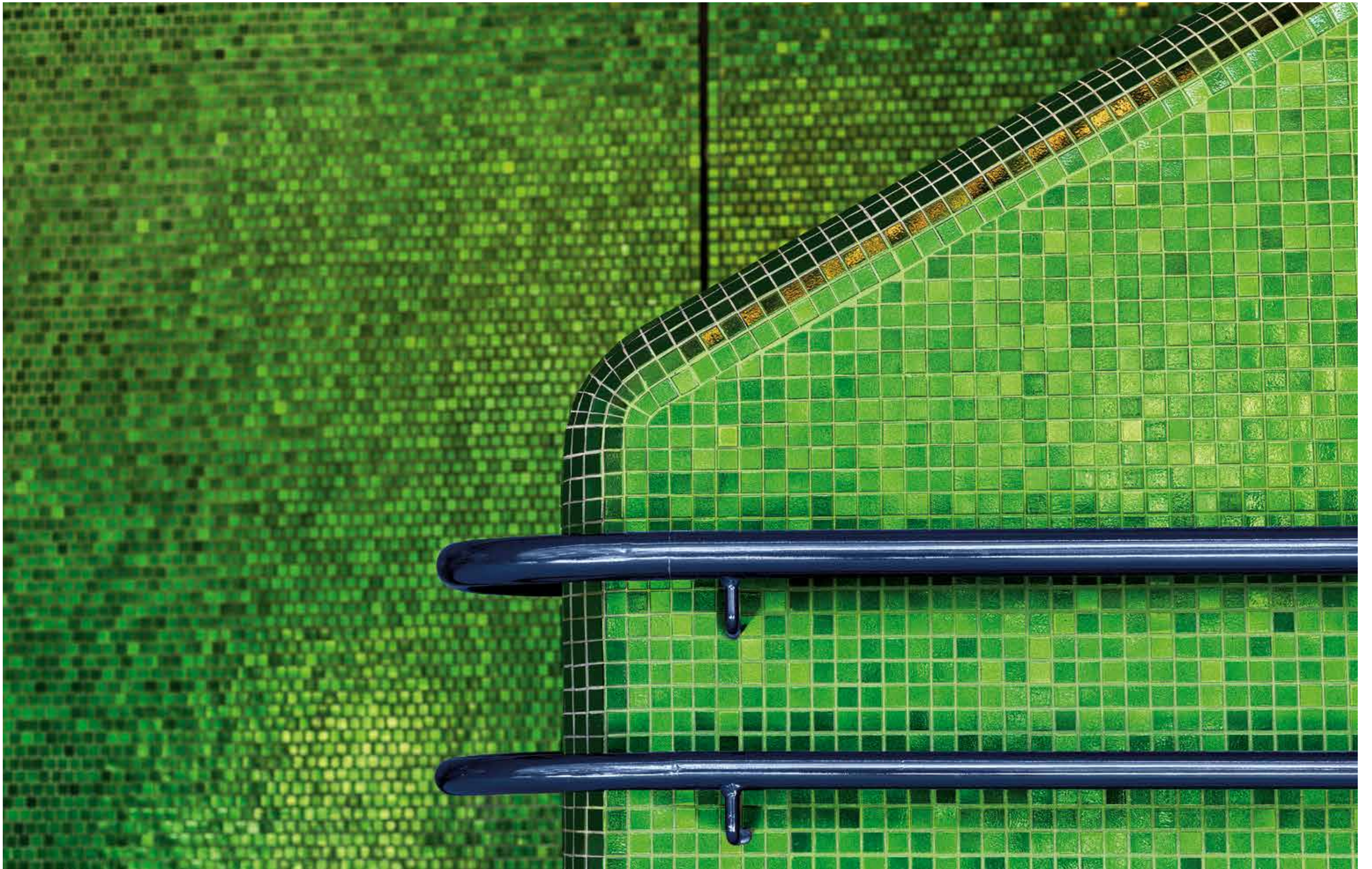
Ispirate alle ali dei coleotteri giapponesi, le tessere, realizzate appositamente per questo nuovo spazio culturale, presentano una superficie cangiante, che vira dal rosso al verde, con il variare dell'incidenza della luce.

Nine million Bisazza mosaic tiles decorate the dome and foyer of the La Seine Musicale auditorium recently opened in Paris, designed by architect Shigeru Ban, winner of the 2014 Pritzker Prize.

Inspired by the wings of Japanese beetles, the mosaic tiles, produced specifically for the new cultural centre, have an iridescent surface that changes from red to green depending on the angle of the light.









Orchestre impair
Premier balcon impair
Second balcon



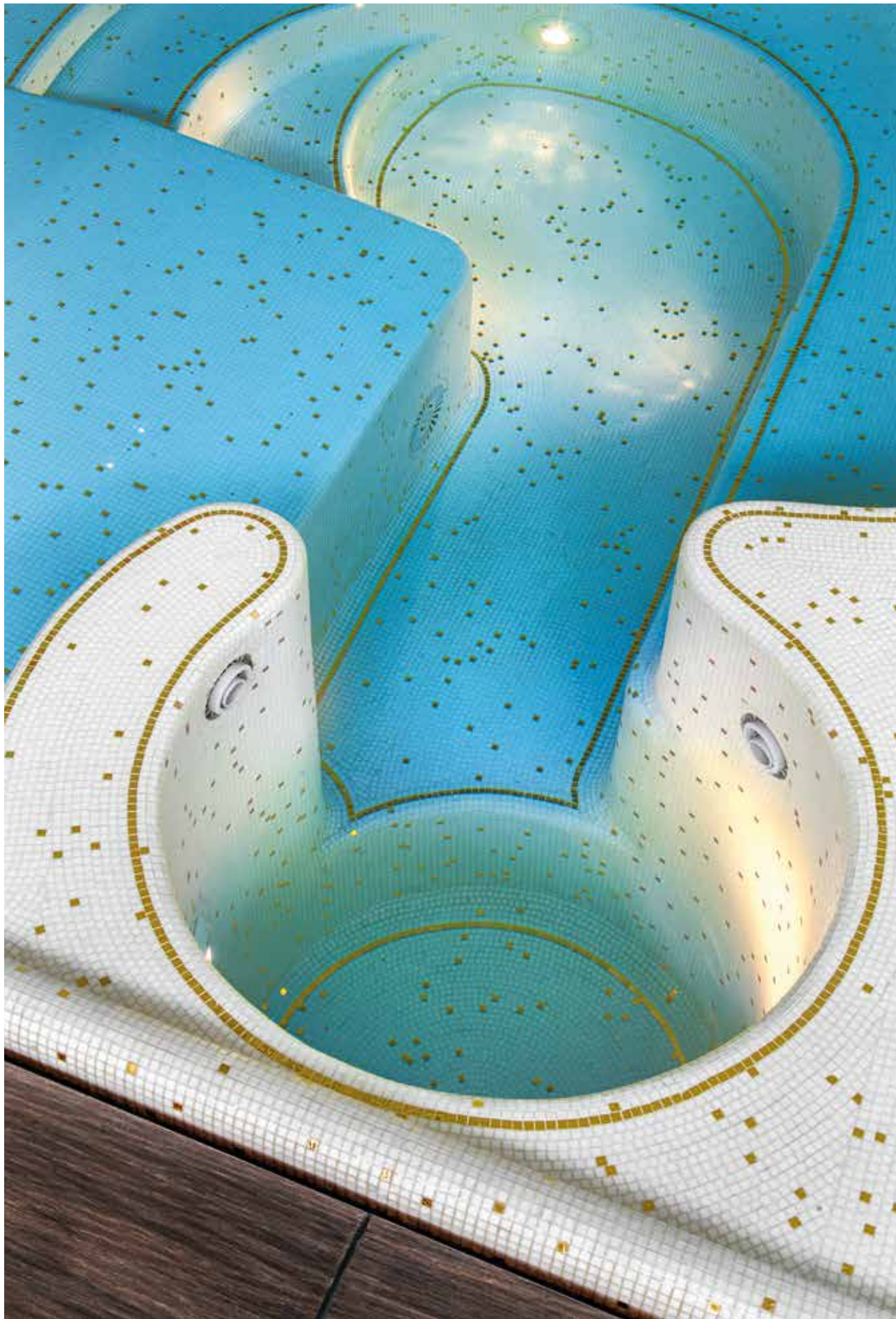
Orchestre pair
Premier balcon pair

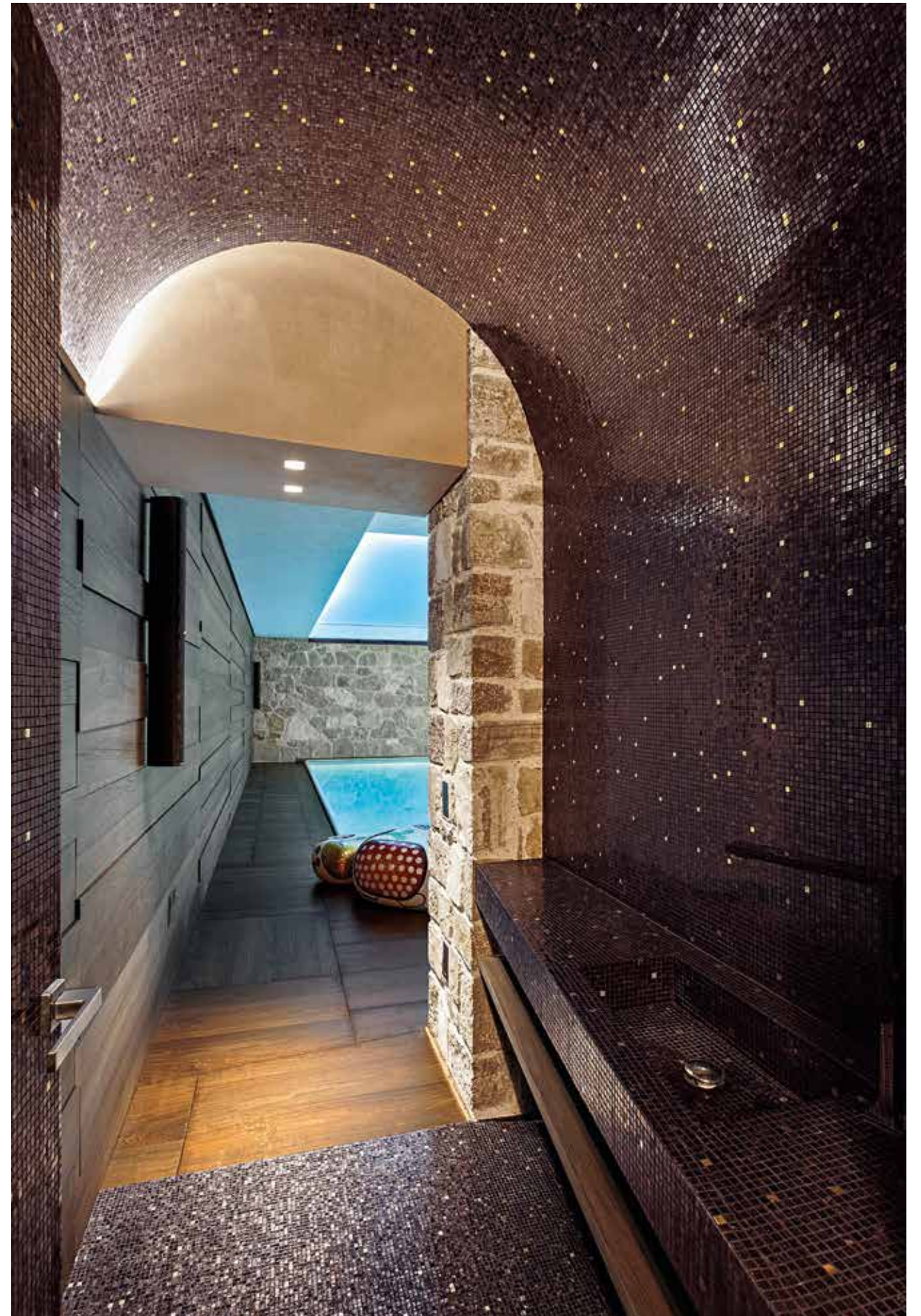


POOL & SPA

La zona wellness di questa residenza privata è caratterizzata dal formato più piccolo delle tessere di mosaico di vetro (10x10 mm) e dalle tessere in oro giallo che impreziosiscono le superfici. Mentre per il rivestimento della piscina è stato scelto il mosaico bianco, con righe in oro che disegnano l'andamento sinuoso dei gradini e dei volumi immersi nell'acqua, la sauna è interamente rivestita di tessere marroni della serie Le Gemme, illuminate dal mosaico in oro.

The wellness area in this private home is tiled with glass mosaic in the smallest format (10x10 mm) and preciouslly embellished with yellow gold tiles. The pool is lined with white mosaic, with gold stripes outlining the curves of the underwater steps, and the sauna is covered entirely in brown mosaic from the Le Gemme series, with gold mosaic.





COOL MINIMALISM

I due pattern selezionati da India Mahdavi per i pavimenti di questo progetto residenziale fanno parte della collezione Cementiles, che la designer stessa ha firmato per Bisazza: piastrelle esagonali in cemento dall'effetto optical, di chiara ispirazione pop e seventies.

The two patterns selected by India Mahdavi for the floors of this residential project belong to the Cementiles collection she designed for Bisazza: hexagonal concrete tiles with an optical effect, clearly inspired by the pop and seventies design style.



IN THE SKY 10



FONDAZIONE BISAZZA



ARAKI

Con la mostra ARAKI, curata da Filippo Maggia, la Fondazione Bisazza rende omaggio al celebre e controverso fotografo contemporaneo, Nobuyoshi Araki.

In mostra, dal 21 settembre al 3 dicembre 2017, l'universo del maestro giapponese, dai nudi femminili, alle composizioni floreali, agli scorci cittadini e ai cieli di Tokyo. Più di settanta fotografie inducono l'osservatore ad una profonda riflessione sull'universo femminile, sull'eros e sulla morte.

Fondazione Bisazza celebrates Nobuyoshi Araki, one of the most acclaimed and controversial contemporary photographers, with a solo exhibit curated by Filippo Maggia.

On show from September 21 to December 3 2017, the exhibit explores the world of the Japanese master photographer, from female nudes and floral compositions, to urban still lifes and Tokyo skylines. The exhibit showcases more than seventy photographs, encouraging visitors to reflect on the poignant topics of femininity, eros and death





Foto Mattia Aquila

Lorenzo Ceretta

Courtesy of Giuliano dell'Uva / Nathalie Krag / Living Inside

Courtesy of Fondazione Cassa di Risparmio di Modena

Vincent Fournier

Matteo Imbriani

Brigitte Lacombe

Fernando Laszlo

Erwin Olaf

James Reeve / Time Inc.

Anson Smart

Courtesy of Taka Ishii Gallery, Tokyo

Courtesy Marcel Wanders

Progetto grafico Paolo Rinaldi

Patrizia Lavarda