

Raccordi in acciaio INOX

stainless steel fittings

Raccorderie  **Emiliane**

I nostri articoli sono costruiti con materiali conformi alle normative vigenti in stabilimenti tecnologicamente all'avanguardia.

Our articles are produced according to the applicable regulations in technologically advanced establishments.

PRESENTAZIONE DEGLI ACCIAI INOSSIDABILI

ACCIAIO INOX o acciaio inossidabile è il nome dato correntemente agli acciai ad alto tenore di cromo, per la loro proprietà di non arrugginire se esposti all'aria e all'acqua: il cromo, ossidandosi a contatto con l'ossigeno, si trasforma in ossido di cromo (CrO_2) che aderisce al pezzo, impedendone un'ulteriore ossidazione (tale fenomeno è noto come passivazione).

Sono una classe estremamente importante di acciai, usata per gli scopi più disparati.

TIPI DI ACCIAIO INOSSIDABILE

Il termine acciaio inossidabile (o inox) indica genericamente gli acciai ad alta lega contenenti cromo, generalmente in quantità fra il 15 e il 30%. Altri leganti che aumentano la resistenza alla corrosione sono nichel e molibdeno.

I principali gruppi di acciai inox sono i seguenti:

- ACCIAI FERRITICI
- ACCIAI MARTENSITICI
- ACCIAI AUSTENITICI

I raccordi e le valvole a sfera che le RACCORDERIE EMILIANE forniscono sono costruiti in acciaio inossidabile Austenitico e sono identificati nella classificazione AISI come SERIE 300.

Principali acciai rientranti nella serie 300, sono l'**AISI 304** e **316** con i loro derivati **304L** e **316L**.

AISI 304: ha elevata resistenza a fatica e scarsa sensibilità ad intagli ed è normalmente utilizzato in presenza di basse temperature.

AISI 316: si differenzia dal 304 per la presenza del Molibdeno (Mo) in ragione del 2-3%. Questo elemento conferisce ottime caratteristiche di resistenza alla corrosione e migliori caratteristiche meccaniche ad elevate temperature.

L'**AISI 304L** e **316L**, si differenziano dai precedenti soprattutto per il minor contenuto di Carbonio nella lega, ciò consente di effettuare saldature con temperature più alte.

COMPOSIZIONE CHIMICA

TIPO DI ACCIAIO	C max	Si max	Mn max	S max	Cr	Ni	Mo	P max	N	Cu
304	≤0,08	≤1,00	≤2,00	≤0,03	18,0 / 20,0	8,0 / 10,50	-	≤0,045	≤0,11	-
304L	≤0,030	≤1,00	≤2,00	≤0,03	17,5 / 21,0	8,5 / 12,0		≤0,045	≤0,11	-
316	≤0,08	≤1,00	≤2,00	≤0,03	16,0 / 18,0	10,0 / 14,0	2,0 / 3,0	≤0,045	≤0,11	
316L	≤0,030	≤1,00	≤2,00	≤0,03	16,5 / 18,5	10,0 / 14,0	2,0 / 3,0	≤0,045	≤0,11	

PROPRIETÀ MECCANICHE

- Carico di rottura: 35/36 Kg/mm²
- Carico di snervamento: particolarmente basso
- Duttilità: ottima
- Tenacità: ottima
- Ottima resistenza alla corrosione
- Facilità di ripulitura e ottimo coefficiente igienico
- Facilmente lavorabile, forgiabile e saldabile.

IMPIEGO DEGLI ACCIAI INOSSIDABILI AUSTENITICI AISI 304 E 316

Tutti questi acciai sono caratterizzati da un contenuto in Ni e Cr in percentuale tale da suggerire il loro impiego in tutte quelle applicazioni in cui si richiedono materiali atti a sopportare gravose condizioni di esercizio.

Sono particolarmente indicati nel campo delle industrie alimentari quali fabbriche di conserve, birra, bibite e prodotti caseari ed industrie farmaceutiche.

Questi materiali sono inoltre utilizzati per la costruzione di scambiatori di calore, nelle industrie chimiche: vasche di processo ed auto-clavi apparecchi nei serbatoi, nelle aziende della lavorazione della carta in quelle petrolchimiche, petrolifere e tessili.

STAINLESS STEEL

Stainless steel is the name given to the current high-chromium steel, for their property not to rust if exposed to air and water: chromium, oxidizes in contact with oxygen, is transformed into oxide Chromium (CrO₂) that adheres to the part, preventing further oxidation (this is known as passivation). The stainless steel family is a very important class of steels, used for many different purposes.

STAINLESS STEEL GRADES

The word stainless steel (or INOX steel) generally indicates alloy steels containing chromium, usually in percentages between 15 and 30%.

Other chemical elements that increase resistance to corrosion are nickel and molybdenum .

The main groups of stainless steel are:

- FERRITIC STEELS
- MARTENSITIC STEELS
- AUSTENITIC STEELS

The fittings and ball valves provided by RACCORDERIE EMILIANE are made in Austenitic stainless steel and are identified in the classification as AISI 300 series.

The main steels used in the 300 series are the **AISI 304** and **AISI 316** with their derivatives **304L** and **316L**.

AISI 304: it has high fatigue resistance and low sensitivity to carving and is normally used at low temperatures.

AISI 316 differs from 304 due to the presence of molybdenum (Mo) in a percentage of 2-3%. This element gives excellent resistance to corrosion and improve the mechanical properties at high temperatures.

The **AISI 304L** and **316L** are different from the previous one because in consequence of the lower carbon's content in the alloy, it is possible to weld at higher temperatures.

CHEMICAL'S COMPOSITION

TIPO DI ACCIAIO	C max	Si max	Mn max	S max	Cr	Ni	Mo	P max	N	Cu
304	≤0,08	≤1,00	≤2,00	≤0,03	18,0 / 20,0	8,0 / 10,50	-	≤0,045	≤0,11	-
304L	≤0,030	≤1,00	≤2,00	≤0,03	17,5 / 21,0	8,5 / 12,0		≤0,045	≤0,11	-
316	≤0,08	≤1,00	≤2,00	≤0,03	16,0 / 18,0	10,0 / 14,0	2,0 / 3,0	≤0,045	≤0,11	
316L	≤0,030	≤1,00	≤2,00	≤0,03	16,5 / 18,5	10,0 / 14,0	2,0 / 3,0	≤0,045	≤0,11	

MECHANICAL PROPERTIES

- Tensile strength: 35/36 kg/mm²
- Yield strength: very low
- Ductility: excellent
- Toughness: Excellent
- Excellent resistance to corrosion
- Easy to be cleaned and high hygiene factor
- Easy Workable, weldable and Forging.

USE OF STAINLESS STEEL AUSTENITIC AISI 304 AND 316

All these steels are characterized by a percentage content of Ni and Cr that suggested their use in all those applications that require materials to withstand hard conditions.

They are particularly suitable in industries like food canneries, beer, soft drinks and dairy products and pharmaceutical industries.

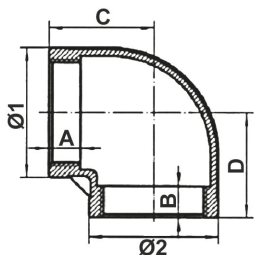
These materials are also used to built heat exchangers in the chemical industry: tanks and process equipment, autoclaves, in tanks, in paper processing companies, in the petrochemical oil and textiles companies.

ART. 400

Gomito F.F. AISI 316.
AISI 316 F.F. elbow.



Fig. 90



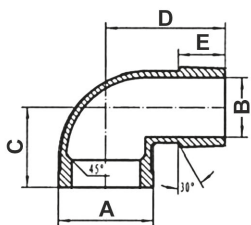
Codice/Code	Ø	Ø 1	Ø 2	A	B	C	D	Conf./Pack		€ cad./€ each
1300205	1/8"	14,5	14,5	6,5	6,5	15	15	10	500	1,23
1300206	1/4"	19	19	7	7	19	19	10	500	1,45
1300207	3/8"	22	22	8	8	22	22	10	300	1,84
1300208	1/2"	26,5	26,5	8,5	8,5	24,5	24,5	10	120	2,10
1300209	3/4"	32	32	9,5	9,5	28	28	10	70	3,34
1300210	1"	39	39	9,5	9,5	31,5	31,5	10	50	5,00
1300211	1 1/4"	48,5	48,5	14	14	39,5	39,5	10	30	7,23
1300212	1 1/2"	55	55	14,5	14,5	44	44	10	20	9,90
1300213	2"	68	68	16,5	16,5	51,5	51,5	5	10	15,58
1300214	2 1/2"	85	85	21	21	65	65	2	6	30,56
1300215	3"	99	99	23	23	78	78	1	2	45,58

ART. 402

Gomito M.F. AISI 316.
AISI 316 M.F. elbow.



Fig. 92



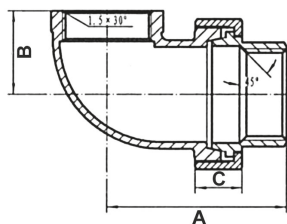
Codice/Code	Ø	Ø A	Ø B	C	D	E	Conf./Pack		€ cad./€ each
1300105	1/8"	14,5	6	17	28	10	10	500	1,68
1300106	1/4"	17,5	8,2	19	32,5	11,6	10	450	2,10
1300107	3/8"	22	11,6	20	32	11,6	10	200	2,38
1300108	1/2"	26,2	15	22	35	16	10	150	2,40
1300109	3/4"	32,7	20,6	27,5	41	16	10	100	3,70
1300110	1"	40	26,5	30	47,5	16,5	10	50	6,00
1300111	1 1/4"	49,5	34	38,5	55	17	10	20	8,62
1300112	1 1/2"	55	40	41,5	59	20,5	10	20	11,40
1300113	2"	68	51	51	73	23,8	5	10	15,85
1300114	2 1/2"	84	65,5	68	83	28,5	2	6	33,35
1300115	3"	98,5	77,5	73	93,5	29	1	2	53,90

ART. 404

Bocchettone conico curvo F.F.
AISI 316.
AISI 316 F.F. bent pipe union.



Fig. 96



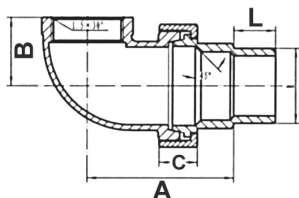
Codice/Code	Ø	A	B	C	Conf./Pack		€ cad./€ each
1300308	1/2"	49	22	14	10	60	8,35
1300309	3/4"	55	25,5	14	10	50	12,50
1300310	1"	65,5	30	17	10	20	15,30
1300311	1 1/4"	74,5	37,5	17	1	12	22,25
1300312	1 1/2"	79	40,5	19	1	8	27,00
1300313	2"	91	50	20,5	1	6	43,62

ART. 406

Bocchettone conico curvo M.F.
AISI 316.
AISI 316 M.F. bent pipe union.



Fig. 98



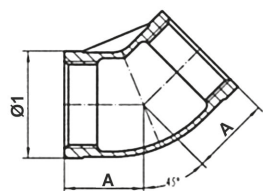
Codice/Code	Ø	A	B	C	L	Conf./Pack		€ cad./€ each
1300358	1/2"	49	22	14	14,5	10	60	9,75
1300359	3/4"	55	25,5	14	16,5	10	40	12,50
1300360	1"	65,5	30	17	18,5	10	20	17,00
1300361	1 1/4"	74,5	37,5	17	21	1	12	24,50
1300362	1 1/2"	79	40,5	19	22	1	8	29,20
1300363	2"	91	50	20,5	24	1	6	47,25

ART. 407

Gomito 45° F.F. AISI 316.
AISI 316 F.F. elbow.



Fig. 120



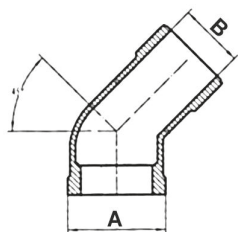
Codice/Code	Ø	Ø 1	A	Conf./Pack		€ cad./€ each
				Ø	Box	
1306256	1/4"	19	17	10	500	2,23
1306257	3/8"	22	19	10	480	2,45
1306258	1/2"	26	21	10	150	2,92
1306259	3/4"	32	25	10	100	4,45
1306260	1"	39	29	10	60	5,70
1306261	1"1/4	48	34	1	50	8,90
1306262	1"1/2	54,5	37	1	20	12,00
1306263	2"	67,5	42	1	10	16,68
1306265	3"	98,5	54	1	2	48,62

ART. 407/A

Gomito 45° M.F. AISI 316.
AISI 316 M.F. elbow.



Fig. 121



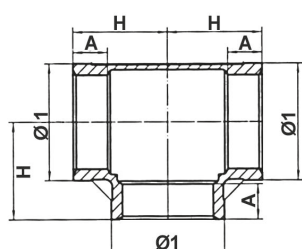
Codice/Code	Ø	A	B	Conf./Pack		€ cad./€ each
				Ø	Box	
1306356	1/4"	17,5	8,2	10	500	1,68
1306357	3/8"	22	11,6	10	250	2,23
1306358	1/2"	26	15	10	160	3,34
1306359	3/4"	32,5	20,6	10	120	4,87
1306360	1"	40	26,5	10	60	8,10
1306361	1"1/4	49	34	1	20	11,12
1306362	1"1/2	55	40	1	20	15,30
1306363	2"	68	51	1	8	23,35
1306365	3"	98	77,5	1	2	58,35

ART. 408

Tee AISI 316.
AISI 316 Tee.



Fig. 130



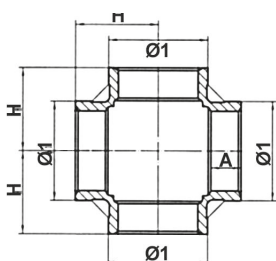
Codice/Code	Ø	Ø 1	Ø 2	H	A	Conf./Pack		€ cad./€ each
						Ø	Box	
1301605	1/8"	14,5	14,5	15	6,5	10	250	2,23
1301606	1/4"	19	19	19	7	10	250	2,45
1301607	3/8"	22	22	22	8	10	200	3,45
1301608	1/2"	26	26	25	8,5	10	80	3,05
1301609	3/4"	32	32	28	9,5	10	50	4,50
1301610	1"	39	39	33,5	9,5	10	30	6,50
1301611	1"1/4	48	48	40,5	14	5	15	10,00
1301612	1"1/2	54,5	54,5	44,5	14,5	2	12	13,10
1301613	2"	67,5	67,5	52	16,5	1	8	20,30
1301614	2"1/2	85	85	65	21	1	4	41,68
1301615	3"	98,5	98,5	78	23	1	2	61,12

ART. 410

Croce AISI 316.
AISI 316 cross.



Fig. 180



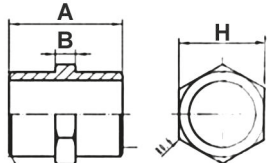
Codice/Code	Ø	Ø 1	H	A	Conf./Pack		€ cad./€ each
					Ø	Box	
1308306	1/4"	19	19	7	10	160	3,62
1308307	3/8"	22	22	8	10	120	3,90
1308308	1/2"	26	25	8,5	10	100	4,90
1308309	3/4"	32	28	9,5	10	80	7,50
1308310	1"	39	33,5	9,5	10	20	10,00
1308311	1"1/4	48	40,5	14	1	15	17,50
1308312	1"1/2	54,5	44,5	14,5	1	10	19,50
1308313	2"	67,5	52	16,5	1	6	30,00

ART. 412

Nipplo AISI 316.
AISI 316 nipple.



Fig. 280



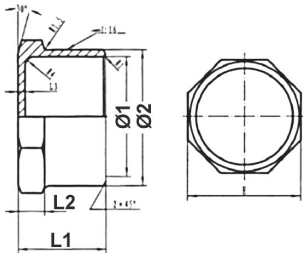
Codice/Code	Ø	A	B	H	Conf./Pack		€ cad./€ each
1303005	1/8"	30	6	14	10	1000	1,12
1303006	1/4"	30	6,5	14,4	10	800	1,20
1303007	3/8"	32	7	18	10	800	1,45
1303008	1/2"	36,5	7,5	22,5	10	200	1,78
1303009	3/4"	40	7,5	28	10	150	2,45
1303010	1"	45	8	34,5	10	60	4,45
1303011	1 1/4"	50,5	10	44,3	10	50	5,58
1303012	1 1/2"	55	11	50	10	30	7,50
1303013	2"	66	12	62	9	27	10,85
1303014	2 1/2"	66,5	12,5	78	4	12	22,80
1303015	3"	70	12,5	92	1	8	30,60

ART. 414

Tappo M AISI 316.
AISI 316 M plug.



Fig. 290



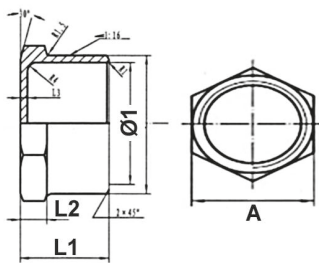
Codice/Code	Ø	Ø 1	L1	L2	Ø 2	Conf./Pack		€ cad./€ each
1303205	1/8"		16,5	5	12,7	10	1000	1,00
1303206	1/4"	9,7	16,5	5	14,5	10	1000	1,12
1303207	3/8"	12,3	17,5	5	18	10	600	1,45
1303208	1/2"	16,5	20,5	6	20,5	20	400	1,62
1303209	3/4"	21,3	23	6,5	28,4	10	250	2,50
1303210	1"	28,2	26	6,5	34,5	10	200	3,35
1303211	1 1/4"	34,5	28	7,5	43,5	6	120	4,75
1303212	1 1/2"	42	28	7,5	49,5	4	100	6,40
1303213	2"	54	32	8	62	2	40	10,00
1303214	2 1/2"	66	37	12	78	2	24	16,40
1303215	3"	79	38	12	91	2	16	25,00

ART. 416

Tappo F AISI 316.
AISI 316 F plug.



Fig. 300



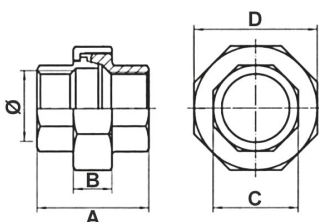
Codice/Code	Ø	A	Ø 1	L1	L2	Conf./Pack		€ cad./€ each
1303305	1/8"	12,7	8	16,5	5	10	1000	1,12
1303306	1/4"	14,5	9,7	16,5	5	10	1000	1,17
1303307	3/8"	18	12,3	17,5	5	10	600	1,42
1303308	1/2"	20,5	16,5	20,5	6	10	400	2,00
1303309	3/4"	28,4	21,3	23	6,5	10	250	2,68
1303310	1"	34,5	28,2	26	6,5	10	150	3,62
1303311	1 1/4"	43,5	34,5	28	7,5	1	80	5,58
1303312	1 1/2"	49,5	42	28	7,5	1	40	6,82
1303313	2"	62	54	32	8	1	20	11,12
1303314	2 1/2"	78	66	38	12	1	20	17,50
1303315	3"	91	79	42	12	1	10	25,00

ART. 418

Bocchettone conico F.F. diritto
AISI 316.
AISI 316 F.F. conic pipe union.



Fig. 340



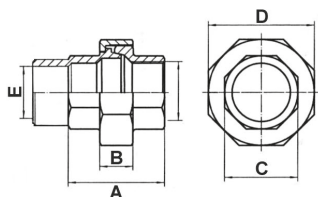
Codice/Code	Ø	A	B	C	D	Conf./Pack		€ cad./€ each
1304105	1/8"	30	12	16	26	10	120	4,05
1304106	1/4"	30	12	16,5	26,3	10	120	5,00
1304107	3/8"	33,5	12,5	20,2	31,4	10	80	5,58
1304108	1/2"	38	14	25	38	10	60	6,40
1304109	3/4"	40,5	14	31	45	10	50	10,00
1304110	1"	49	17	37,5	54	10	20	11,70
1304111	1 1/4"	51	17	46	64,5	1	20	17,50
1304112	1 1/2"	56	19	53,3	71,5	1	15	21,12
1304113	2"	61,5	20,5	65	85,5	1	6	30,58
1304114	2 1/2"	69	24,5	82,5	107	1	4	48,62
1304115	3"	78	26	96	122	1	2	72,30

ART. 420

Bocchettone conico MF diritto AISI 316.
AISI 316 M.F. conic pipe union.



Fig. 341



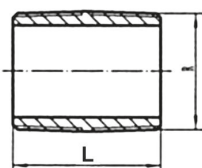
Codice/Code	Ø	A	B	C	D	E	Conf./Pack		€ cad./€ each
							🔑	📦	
1304205	1/8"	30	12	16,5	26,3	6	10	120	4,05
1304206	1/4"	30	12	16,5	26,3	9	10	120	5,58
1304207	3/8"	33,5	12,5	20,2	31,4	12,3	10	100	6,15
1304208	1/2"	38	14	25	38	16	10	60	6,70
1304209	3/4"	40,5	14	31	45	21	10	50	9,75
1304210	1"	49	17	37,5	54	26,8	10	20	14,40
1304211	1"1/4	51	17	46	64,5	35,4	1	16	19,45
1304212	1"1/2	56	19	53,3	71,5	41,2	1	16	22,80
1304213	2"	61,5	20,5	65	85,5	51,5	1	8	34,75
1304214	2"1/2	69	24,5	82,5	107	65,5	1	4	52,80
1304215	3"	78	26	96	122	78	1	2	75,00

ART. 422

Tuttavite AISI 316.
AISI 316 nipple.



Fig. 531



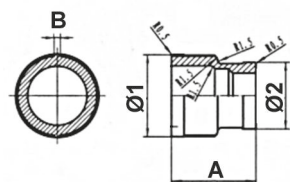
Codice/Code	Ø	L	Conf./Pack		€ cad./€ each
			🔑	📦	
1304506	1/4"	26	10	400	1,95
1304507	3/8"	28	10	300	2,23
1304508	1/2"	34	10	150	2,38
1304509	3/4"	38	10	120	2,80
1304510	1"	42	10	100	3,62
1304511	1"1/4	50	1	60	5,30
1304512	1"1/2	50	1	30	6,12
1304513	2"	58	1	30	8,62

ART. 423

Manicotto ridotto F.F. AISI 316.
F.F. AISI 316 reducing coupling.



Fig. 240



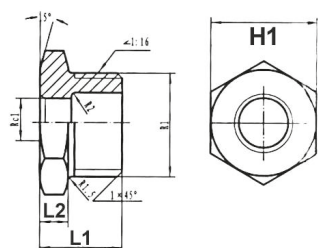
Codice/Code	Ø	Ø 1	Ø 2	A	B	Conf./Pack		€ cad./€ each
						🔑	📦	
1302903	3/8" x 1/4"	22	19	28	2,5	10	500	2,10
1302906	1/2" x 3/8"	26,5	22	33	3	10	200	2,50
1302910	3/4" x 1/2"	32,5	26	37	3	10	150	3,30
1302914	1" x 3/4"	39,5	32	40	3,5	10	80	5,00
1302918	1"1/4 x 1"	49	39	47	3,5	1	60	7,24
1302923	1"1/2 x 1"1/4	54,5	48,5	51	4	1	48	8,90
1302929	2" x 1"1/2	68	54,5	57	5	1	12	12,50

ART. 424

Riduzione M.F. AISI 316.
M.F. AISI 316 reducer.



Fig. 241



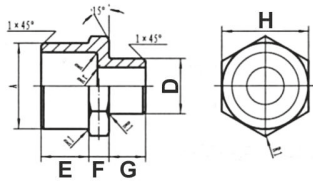
Codice/Code	Ø	L1	L2	H1	Conf./Pack		€ cad./€ each
					🔑	📦	
1302501	1/4" x 1/8"	18,5	5,5	14,4	10	800	1,25
1302502	3/8" x 1/8"	19	5,5	19	10	500	1,45
1302503	3/8" x 1/4"	18,5	5,5	19	10	500	1,40
1302504	1/2" x 1/8"	19	6	22,5	10	420	2,23
1302505	1/2" x 1/4"	19	6	22,5	10	420	1,82
1302506	1/2" x 3/8"	19	6	22,5	10	420	1,50
1302508	3/4" x 1/4"	23	6,5	27,5	10	250	2,50
1302509	3/4" x 3/8"	23	6,5	27,5	10	250	2,50
1302510	3/4" x 1/2"	23	6,5	27,5	10	250	2,50
1302513	1" x 1/2"	26	7,5	34,5	10	150	3,50
1302514	1" x 3/4"	26	7,5	34,5	10	150	3,50
1302516	1"1/4 x 1/2"	28	7	43	1	100	5,50
1302517	1"1/4 x 3/4"	28	7	43	1	100	5,50
1302518	1"1/4 x 1"	28	7	43	1	100	5,50
1302521	1"1/2 x 3/4"	28	7	50	1	80	7,80
1302522	1"1/2 x 1"	28	7	50	1	80	6,80
1302523	1"1/2 x 1"1/4	28	7	50	1	80	6,80
1302527	2" x 1"	35	11	63	1	40	11,40
1302528	2" x 1"1/4	35	11	63	1	40	11,40
1302529	2" x 1"1/2	35	11	63	1	40	9,18
1302531	2"1/2 x 1"1/2	37	12	78	1	20	19,45
1302530	2"1/2 x 2"	37	12	78	1	20	17,80
1302541	3" x 2"	44	12	92	1	16	27,80
1302542	3" x 2"1/2	44	12	92	1	16	25,85

ART. 426

Vite doppia ridotta M.M. AISI 316.
M.M. AISI 316 double reduced screw.



Fig. 245



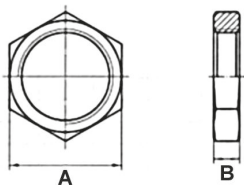
Codice/Code	Ø	E	F	G	H	Conf./Pack		€ cad./€ each
1302957	1/4"x1/8"	12	5,5	10,5	14,8	10	1000	1,40
1302959	3/8"x1/4"	12,5	5,5	12	18,5	10	400	1,68
1302980	1/2"x1/8"	14	6	10,5	22,5	10	250	1,95
1302960	1/2"x1/4"	14	6	12	22,5	10	250	1,95
1302961	1/2"x3/8"	14	6	12,5	22,5	10	250	1,95
1302982	3/4"x1/4"	16,5	7	12	27,6	10	150	2,80
1302962	3/4"x1/2"	16,5	7	14	27,6	10	150	2,80
1302963	1"x1/2"	18,5	7	14	34,5	10	150	3,50
1302964	1"x3/4"	18,5	7	16,5	34,5	10	150	3,90
1302966	1"1/4x1/2"	18,5	7	16,5	34,5	10	150	5,25
1302968	1"1/4x1"	21	7	18,5	43	1	60	6,12
1302970	1"1/2x1"	22	8	18,5	49,5	1	50	8,10
1302972	1"1/2x1"1/4"	22	8	21	49,5	1	50	8,10
1302973	2"x1"	24	8	18,5	62	1	40	10,60
1302974	2"x1"1/4"	24	8	21	62	1	40	10,60
1302975	2"x1"1/2"	24	8	22	62	1	40	10,60

ART. 428

Controdado inox AISI 316.
AISI 316 back nut.



Fig. 310



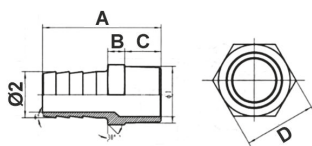
Codice/Code	Ø	A	B	Conf./Pack		€ cad./€ each
1307905	1/8"	17	6	10	1500	1,12
1307906	1/4"	20,5	7	10	1200	1,12
1307907	3/8"	24	7	10	1000	1,18
1307908	1/2"	30	8,5	10	600	1,30
1307909	3/4"	35	9	10	400	1,70
1307910	1"	41	11	1	200	2,25
1307911	1"1/4"	51	11,5	1	150	3,10
1307912	1"1/2"	57	11,5	1	100	4,05
1307913	2"	69	12	1	60	5,85

ART. 430

Portagomma M AISI 316.
AISI 316 hose connector.



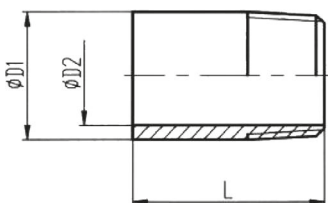
Fig. 344



Codice/Code	Ø	Ø 2	A	B	C	D	Conf./Pack		€ cad./€ each
1308006	1/4"	9	48	6	13	15	10	400	1,95
1308007	3/8"	11	48	6	12	18,3	10	350	2,23
1308008	1/2"	15	52,6	6	14,6	22	10	150	2,65
1308009	3/4"	20	61	6	17	28	10	100	3,90
1308010	1"	26	66	8,5	18,5	36	10	50	6,12
1308011	1"1/4"	34	75	10	20	44	1	35	8,65
1308012	1"1/2"	40,5	82	11,5	21,5	50	1	30	11,40
1308013	2"	52,5	98,5	13	25,5	62	1	20	18,35
1308014	2"1/2"	63,5	116	13	30	78	1	8	35,85
1308015	3"	76,1	119,5	13	32	91,3	1	4	46,70

ART. 432

Tronchetto a saldare AISI 316.
Aisi 316 trunk to be welded.



Codice/Code	Ø	D1	D2	L	Conf./Pack	€ cad./€ each
1308206	1/4"	13,5	9,5	30	10	1,12
1308207	3/8"	17,5	11,5	32	10	1,25
1308208	1/2"	21,5	15,5	35	20	1,40
1308209	3/4"	27	21	40	10	1,95
1308210	1"	33,7	27	40	10	2,45
1308211	1"1/4"	43,5	36	51	1	4,20
1308212	1"1/2"	48,5	41	51	1	4,75
1308213	2"	60	52	51	1	6,15
1308214	2"1/2"	76	67,5	60	1	10,60
1308215	3"	89,5	80	71	1	13,35
1308217	4"	115	105	82	1	27,80

ART. 450

Barilotto AISI 316.
AISI 316 barrel nipple.



Codice/Code	Ø	mm	Conf./Pack	€ cad./€ each
1308156	1/4"	40	10	1,40
1308157	3/8"	40	10	1,95
1308158	1/2"	60	10	2,50
1308159	3/4"	60	10	3,10
1308285	1"	80	10	4,18
1308286	1"1/4	80	1	6,95
1308162	1"1/2	80	1	7,80
1308163	2"	100	1	12,50

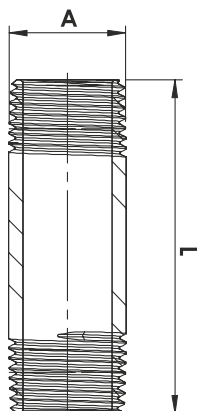
ART. 451

Barilotto AISI 304.
AISI 304 expansion bolt.



**BARILOTTI
AISI 304 DIN 2999**

Codice/Code	Ø A	L mm	Conf./Pack	€ cad./€ each
1308131	cm. 4x1/2"	40	10	1,53
1308132	cm. 5x1/2"	50	10	1,68
1308113	cm. 6x1/2"	60	10	1,75
1308116	cm. 7x1/2"	70	10	1,95
1308117	cm. 8x1/2"	80	10	2,18
1308130	cm. 9x1/2"	90	10	2,25
1308114	cm. 10x1/2"	100	10	2,50
1308133	cm. 11x1/2"	110	10	2,68
1308134	cm. 12x1/2"	120	10	2,85
1308135	cm. 4x3/4"	40	10	1,90
1308136	cm. 5x3/4"	50	10	2,10
1308137	cm. 6x3/4"	60	10	2,23
1308138	cm. 7x3/4"	70	10	2,50
1308139	cm. 8x3/4"	80	10	3,06
1308140	cm. 9x3/4"	90	10	3,20
1308141	cm. 10x3/4"	100	10	3,35
1308142	cm. 11x3/4"	110	10	3,62
1308143	cm. 12x3/4"	120	10	3,90
1309501	cm. 4x1"	40	10	2,50
1309502	cm. 5x1"	50	10	2,80
1309503	cm. 6x1"	60	10	3,10
1309504	cm. 7x1"	70	10	3,35
1309505	cm. 8x1"	80	10	3,62
1309506	cm. 9x1"	90	10	4,18
1309507	cm. 10x1"	100	10	4,45
1309508	cm. 11x1"	110	10	5,00
1309509	cm. 12x1"	120	10	5,60
1309511	cm. 4x1"1/4	40	10	3,06
1309512	cm. 5x1"1/4	50	10	3,35
1309513	cm. 6x1"1/4	60	10	3,90
1309514	cm. 7x1"1/4	70	10	4,20
1309515	cm. 8x1"1/4	80	10	4,60
1309516	cm. 9x1"1/4	90	10	5,00
1309517	cm. 10x1"1/4	100	10	5,85
1309518	cm. 11x1"1/4	110	10	6,12
1309519	cm. 12x1"1/4	120	10	6,70

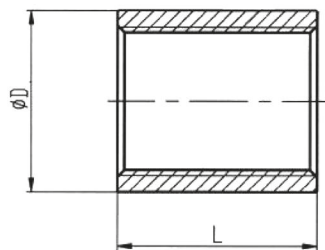


ART. 454

Manicotto a saldare AISI 316.
AISI 316 coupling to be welded.



Fig. 270



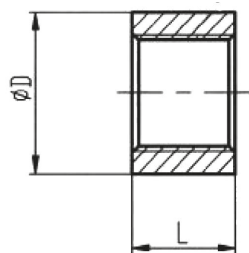
Codice/Code	Ø	D	L	Conf./Pack		€ cad./€ each
				⊗	⊞	
1302805	1/8"	14	18	10	800	1,34
1302806	1/4"	18	24	10	350	1,68
1302807	3/8"	20,5	29	10	320	1,82
1302808	1/2"	24,5	32	20	240	2,10
1302809	3/4"	30	34	10	100	2,80
1302810	1"	37	41	10	60	3,75
1302811	1"1/4	46,5	47	6	40	5,56
1302812	1"1/2	51,5	47	4	40	6,12
1302813	2"	67	61	2	18	11,70
1302814	2"1/2	84,5	70	1	12	24,75
1302815	3"	96	75	1	8	26,70
1302817	4"	125	86	1	4	45,85

ART. 456

Mezzo manicotto a saldare AISI 316.
AISI 316 half coupling to be welded.



Fig. 170



Codice/Code	Ø	D	L	Conf./Pack		€ cad./€ each
				⊗	⊞	
1303105	1/8"	14	11,5	10	650	1,12
1303106	1/4"	18	13,5	10	600	1,25
1303107	3/8"	21	14,5	10	450	1,29
1303108	1/2"	26	18,5	20	250	1,68
1303109	3/4"	32	20	10	200	2,10
1303110	1"	38	22	10	100	3,06
1303111	1"1/4	48,5	25	6	60	4,74
1303112	1"1/2	55	27	4	45	5,56
1303113	2"	67	31	2	30	7,80
1303114	2"1/2	84,5	35	2	24	15,00

ART. 460

Riduzione concentrica AISI 304
spess. 2mm.
AISI 304 concentric reductions.



Codice/Code	Ø	Conf./Pack	€ cad./€ each
1308230	26,9x21,3	1	5,25
1308231	33,7x21,3	1	3,80
1308232	33,7x26,9	1	3,65
1308223	42,4x26,9	1	5,20
1308235	42,4x33,7	1	5,00
1308234	48,3x26,9	1	6,70
1308237	48,3x33,7	1	6,70
1308224	48,3x42,4	1	6,50
1308225	60,3x26,9	1	8,00
1308226	60,3x33,7	1	8,00
1308238	60,3x42,4	1	7,70
1308239	60,3x48,3	1	7,40
1308218	76,1x33,7	1	17,70
1308219	76,1x42,4	1	9,90
1308220	76,1x48,3	1	9,70
1308221	76,1x60,3	1	9,30
1308227	88,9x33,7	1	21,50
1308228	88,9x42,4	1	11,50
1308249	88,9x48,3	1	11,50
1308229	88,9x60,3	1	11,30
1308240	88,9x76,1	1	11,20
1308253	114,3x48,3	1	26,40
1308248	114,3x60,3	1	17,20
1308254	114,3x76,1	1	16,70
1308242	114,3x88,9	1	16,40

ART. 462

Curva a saldare mm. 2 AISI 304.
DIN 2605 D3.
AISI 304 mm. 2 welding elbow.



Codice/Code	DE	DN	Ø	Spess. mm.	Conf./Pack	€ cad./€ each
1308608	21,3	15	1/2"	2	1	2,50
1308609	26,9	20	3/4"	2	1	2,92
1308610	33,7	25	1"	2	1	3,62
1308611	42,4	32	1 1/4"	2	1	4,32
1308612	48,3	40	1 1/2"	2	1	5,56
1308613	60,3	50	2"	2	1	7,80
1308614	76,1	65	2 1/2"	2	1	12,80
1308615	88,9	80	3"	2	1	18,10
1308616	101,6	90	3 1/2"	2	1	22,80
1308617	114,3	100	4"	2	1	25,85
1308618	139,7	125	5"	2	1	52,00
1308620	168,3	150	6"	2	1	72,00

ART. 524

Fondello bombato AISI 304 spess. 2 mm.
AISI 304 rounded botton.



Codice/Code	DE	Ø DN	Ø GAS	Spess. mm.	Conf./Pack	€ cad./€ each
1308808	21,3	15	1/2"	2	1	1,56
1308809	26,9	20	3/4"	2	1	1,56
1308810	33,7	25	1"	2	1	2,23
1308811	42,4	32	1 1/4"	2	1	2,65
1308812	48,3	40	1 1/2"	2	1	3,15
1308813	60,3	50	2"	2	1	3,80
1308814	76,1	65	2 1/2"	2	1	5,30
1308815	88,9	80	3"	2	1	5,60
1308817	114,3	100	4"	2	1	8,35
1308819	139,7	125	5"	2	1	10,85
1308822	168,3	150	6"	2	1	16,70

ART. 526

Tee a saldare mm. 2 AISI 304.
AISI 304 mm. 2 welding tee.



Codice/Code	DE	Ø DN	Ø GAS	Spess. mm.	Conf./Pack	€ cad./€ each
1301508	21,3	15	1/2"	2	1	8,35
1301509	26,9	20	3/4"	2	1	8,35
1301510	33,7	25	1"	2	1	8,90
1301511	42,4	32	1 1/4"	2	1	11,95
1301512	48,3	40	1 1/2"	2	1	13,90
1301513	60,3	50	2"	2	1	16,70
1301514	76,1	65	2 1/2"	2	1	23,10
1301515	88,9	80	3"	2	1	33,35
1301517	114,3	100	4"	2	1	46,70
1301522	139,7	125	5"	2	1	83,35
1301520	168,3	150	6"	2	1	106,15

ART. 527

Collare in acciaio inox 304 con tassello.
304 SS brackets with plug.



Codice/Code	Ø	Conf./Pack	€ cad./€ each
1143408	1/2"	10	3,95
1143409	3/4"	10	4,05
1143410	1"	10	4,40
1143411	1 1/4"	10	4,65
1143412	1 1/2"	10	4,90
1143413	2"	10	5,50
1143414	2 1/2"	10	9,50
1143415	3"	10	10,70

ART. 530

Flangia piana acc. inox AISI 304
UNI 2277-2278 PN 10/16, EN 1092-1/01.
AISI 304 UNI 2277-2278 PN 10/16 EN
1092 - 1/01 stainless steel flat flanges.



Codice/Code	DN	Ø	Fori	Conf./Pack	€ cad./€ each
1143508	15	1/2"	4	10	10,20
1143509	20	3/4"	4	10	13,80
1143510	25	1"	4	10	17,00
1143511	32	1"1/4	4	10	22,00
1143512	40	1"1/2	4	10	26,00
1143513	50	2"	4	10	32,50
1143514	65	2"1/2	4	4	43,50
1143524	65	2"1/2	8	4	43,50
1143515	80	3"	4	4	48,50
1143528	80	3"	8	4	48,50
1143517	100	4"	8	4	55,00
1143519	125	5"	8	2	66,80
1143521	150	6"	8	2	98,00
1143525	200	8"	8	2	131,00
1143530	200	8"	12	2	145,00

ART. 531

Bulloni per flange in acciaio inox A2.
SS A2 Flange bolts.



Codice/Code	Ø	PER FLANGE	Conf./Pack	€ cad./€ each
1146050	12x50	32-50	20	1,25
1146060	16x60	65-80	20	2,50
1146065	16x65	oltre	20	2,90

ART. 532

Cartella di appoggio spess. 2 mm
AISI 304.
Lap-joint.



Codice/Code	DE	Ø DN	Ø DE	Ø	Conf./Pack	€ cad./€ each
1308829	26,9	20	26,9	3/4"	1	1,12
1308830	33,7	25	33,7	1"	1	1,12
1308837	42,4	32	42,4	1"1/4	1	1,34
1308832	48,3	40	48,3	1"1/2	1	1,62
1308831	60,3	50	60,3	2"	1	2,05
1308833	76,1	65	76,1	2"1/2	1	2,95
1308835	88,9	80	88,9	3"	1	3,75
1308834	114,3	100	114,3	4"	1	5,65
1308836	139,7	125	139,7	5"	1	8,35
1308838	168,3	150	168,3	6"	1	10,85

ART. 535

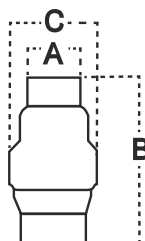
Flangia in alluminio ISO-PN10.
Alluminium flange ISO-PN10.

**ALLUMINIO**

Codice/Code	DN	Ø	Ø INT mm	Fori	Conf./Pack	€ cad./€ each
1143100	10	3/8"	19	4	10	3,75
1143101	15	1/2"	24	4	10	3,75
1143102	20	3/4"	30	4	10	3,90
1143103	25	1"	36	4	10	4,45
1143104	32	1"1/4	46	4	10	7,23
1143105	40	1"1/2	54	4	10	7,50
1143106	50	2"	65	4	4	9,20
1143107	65	2"1/2	81	4	4	11,12
1143108	80	3"	94	8	4	12,23
1143110	100	4"	119	8	4	13,08
1143112	125	5"	145	8	2	17,50
1143113	150	6"	173	8	2	22,50
1143120	200	8"	225	8	2	29,20
1143125	250	10"	279	12	2	36,70
1143130	300	12"	329	12	2	44,50

ART. 536

Valvola di ritegno in acciaio inox AISI 304 stampata tenuta NBR, pressione nominale 16 bar. Temperatura di esercizio -25°C/+90°C.
Stainless steel AISI 304 check valve.



Codice/Code	Ø	A	B	C	Conf./Pack	€ cad./€ each
2320605	1/2"	18	55	32	12	27,10
2320609	3/4"	30	66,7	44	8	33,35
2320610	1"	35,8	83	53	8	39,80
2320611	1"1/4	45	97	62	6	51,40
2320612	1"1/2	50,8	115	78	6	63,90
2320613	2"	63	120,5	89	4	116,00
2320614	2"1/2	80	141	113	1	239,00
2320615	3"	93	164	132	1	334,00
2320617	4"	120	191	167	1	528,00

ART. 537

Rubinetto portagomma a sfera acciaio inox AISI 316.
Ball tap with hose connector.



Codice/Code	Ø	Conf./Pack	€ cad./€ each
1103508	1/2"	10	18,10
1103509	3/4"	10	21,70
1103510	1"	5	30,60

ART. 537/A

Rubinetto a sfera per botti acciaio inox AISI 316.
Ball tap with hose connector.



Con O-Ring sul filetto
with O-ring on thread

Codice/Code	Ø	Conf./Pack	€ cad./€ each
1103607	3/8"	5	18,62
1103608	1/2"	5	20,30

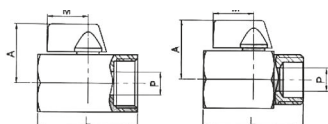
ART. 538

Valvola a sfera MINIBALL MF in acciaio inox AISI 316.
MF Mini ball valve.



Corpo valvola acciaio inox AISI 316, tenuta sfera PTFE, guarnizioni NBR, attacchi filettati UNI EN 10226-1, pressione nominale di esercizio 63 bar, temperatura di esercizio -25°C/+180°C

Body valve stainless steel AISI 316, ball seats PTFE, o-ring NBR, threaded ends according to UNI EN 10226-1, nominal working pressure 63 bar, working temperature -25°C/+180°C



Codice/Code	Ø	DN	A	L	M	P	Conf./Pack	€ cad./€ each
1104156	1/4" MF	8	26	40	22	8	20	14,75
1104157	3/8" MF	10	26	40	22	8	20	13,90
1104158	1/2" MF	15	28	46	22	10	20	15,60

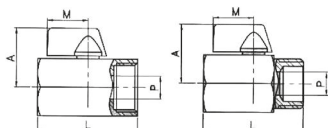
ART. 539

Valvola a sfera MINIBALL FF in acciaio inox AISI 316.
FF Mini ball valve.



Corpo valvola acciaio inox AISI 316, tenuta sfera PTFE, guarnizioni NBR, attacchi filettati UNI EN 10226-1, pressione nominale di esercizio 63 bar, temperatura di esercizio -25°C/+180°C

Body valve stainless steel AISI 316, ball seats PTFE, o-ring NBR, threaded ends according to UNI EN 10226-1, nominal working pressure 63 bar, working temperature -25°C/+180°C



Codice/Code	Ø	DN	A	L	M	P	Conf./Pack	€ cad./€ each
1104106	1/4" FF	8	26	40	22	8	20	14,75
1104107	3/8" FF	10	26	40	22	8	20	13,90
1104108	1/2" FF	15	28	46	22	10	20	15,60

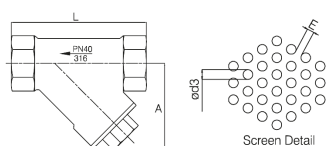
ART. 540

Filtri a Y in acciaio inox AISI 316.
AISI 316 "Y strainer".



Corpo e parti metalliche acciaio inox AISI 316, guarnizioni PTFE, connessioni filettate gas F ISO 228, pressione nominale di esercizio 40 bar, temperatura di esercizio -25°C/+200°C

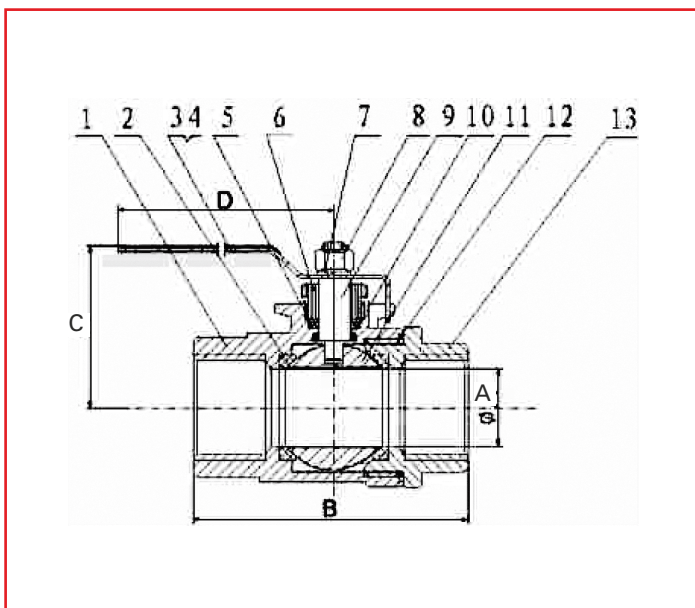
Body valve and metallic parts stainless steel AISI 316, seal PTFE, threaded ends UNI ISO 228 gas female, nominal working pressure 40 bar, working temperature -25°C/+180°C



Codice/Code	Ø	DN	A	L	Ød3	E	Conf./Pack	€ cad./€ each
2322506	1/4"	8	30	65	1,0	1,0	20	31,40
2322507	3/8"	10	30	65	1,0	1,0	20	31,40
2322508	1/2"	15	40	65	1,0	1,0	15	38,35
2322509	3/4"	20	45	80	1,0	1,0	10	42,65
2322510	1"	25	55	90	1,0	1,0	5	68,80
2322511	1"1/4	32	65	105	1,0	1,0	3	88,90
2322512	1"1/2	40	70	120	1,0	1,0	2	109,80
2322513	2"	50	85	140	1,0	1,0	1	175,30

VALVOLE A SFERA - AISI 316

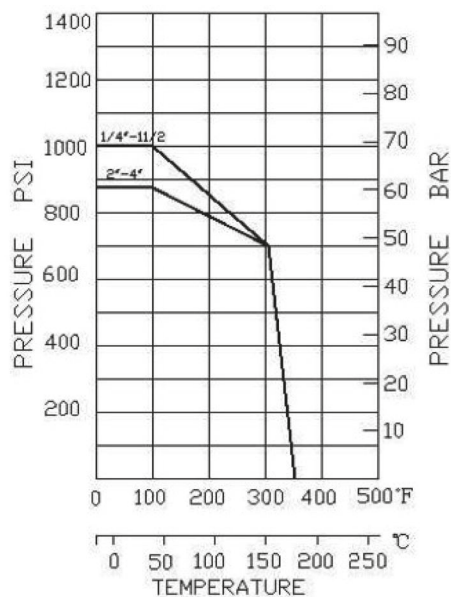
VALVOLE A SFERA 2 PEZZI PASSAGGIO TOTALE AISI 316 / AISI 316 FULL PORT TWO PIECES BALL VALVE



Questo modello di valvola è ideale per il controllo di olii, gas e liquidi corrosivi.

This ball valve can be used for oil, gas.

PRESSURE-TEMPERATURE RATING



Condizioni di impiego:

TEMPERATURA d'esercizio da -10° a +150°C
 Temperature from -10° to +150°C

PRESSIONE nominale massima 1000 psi (70 bar); 14,2 psi = 1 bar
 Max Pressure

FILETTATURA DIN 2999 (esterna conica - interna cilindrica)
 Thread in accordance DIN 2999

Angolo di filettatura 55°
 Thread Angle 55°

ART. 545

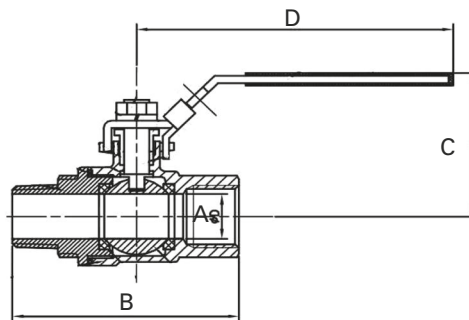
Valvola a sfera AISI 316.
 AISI 316 ball valve.

Codice Code	Ø	Conf./Pack		€ cad. € each
1102806	1/4"	10	60	9,18
1102807	3/8"	10	60	10,00
1102808	1/2"	10	50	10,85
1102809	3/4"	10	20	15,60
1102810	1"	6	20	20,85
1102811	1 1/4"	4	10	36,15
1102812	1 1/2"	2	6	43,35
1102813	2"	1	4	65,85
1102814	2 1/2"	1	1	135,00
1102815	3"	1	1	199,00

DESCRIZIONE					N	DESCRIZIONE	MATERIALE	QUANTITÀ
					1	Corpo / Body	316	1
1/4"	9	40	42	75	2	Anello di sede / Seat	PTFE	2
3/8"	12,5	42,5	42	75	3	Leva / Handle	304	1
1/2"	15	50	48	85	4	Protezione leva / Handle cover	Plastico	1
3/4"	20	56	51	100	5	Guarnizione / Gasket	PTFE	1
1"	25	68	61	105	6	Pressa treccia / Gland	304	1
1 1/4"	32	83	78	120	7	Rondella / Spring washer	304	1
1 1/2"	38	90	82	120	8	Dado leva / Stem nut	304	1
2"	50	111	95	160	9	Stelo / Stem	304	1
2 1/2"	65	138	115	200	10	Rondella di spinta / Thrust washer	PTFE	1
3"	76	156,5	123	200	11	Sfera / Ball	316	1
					12	Guarnizione / Joint gasket	PTFE	1
					13	Cappuccio / Cap	316	1

ART. 546

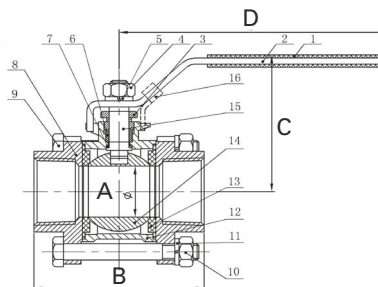
Valvola a sfera MF AISI 316 PN 64. Temperatura di esercizio da -10° C a 150°C.
 MF AISI 316 ball valve PN 64 working temperature: 10°C to 150°C.



Codice Code	Ø	A	B	C	D	Conf.	Pack	€ cad. € each
1103306	1/4"	9,00	57,00	46,00	100,00	10	60	11,15
1103307	3/8"	12,50	57,00	47,00	100,00	10	60	11,70
1103308	1/2"	15,00	68,00	48,00	100,00	10	50	14,45
1103309	3/4"	20,00	77,00	57,50	112,00	10	40	20,00
1103310	1"	25,00	90,60	61,00	112,00	6	20	28,50
1103311	1 1/4"	32,00	101,50	77,50	145,00	4	10	41,15
1103312	1 1/2"	38,00	113,00	82,00	145,00	2	6	55,60
1103313	2"	50,00	138,00	98,00	164,00	1	4	92,00

ART. 547

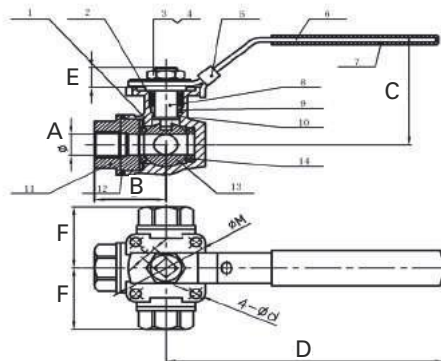
Valvola a sfera FF in 3 pezzi AISI 316 PN 64. Temperatura di esercizio da -10° C a 150°C.
 3 pc. FF AISI 316 ball valve PN 64 working temperature: 10°C to 150°C.



Codice Code	Ø	A	B	C	D	Conf.	Pack	€ cad. € each
1103458	1/2"	15,00	62,00	49,00	100,00	10	50	22,80
1103459	3/4"	20,00	69,00	60,00	112,00	10	40	29,00
1103460	1"	25,00	79,00	64,00	112,00	6	20	39,50
1103461	1 1/4"	32,00	96,00	80,00	145,00	4	10	63,00
1103462	1 1/2"	38,00	102,00	83,00	145,00	2	6	80,00
1103463	2"	50,00	124,00	97,00	165,00	1	4	113,00

ART. 548

Valvola a sfera a 3 vie a L PN 64 AISI 316. Temperatura di esercizio da -10° C a 150°C.
 AISI 316 3 ways ball valve PN 64 working temperature: 10°C to 150°C.



Codice Code	Ø	A	B	C	D	E	F	Conf.	Pack	€ cad. € each
1103408	1/2"	12,70	38,30	67,00	140,00	10,00	37,90	10	50	53,00
1103409	3/4"	16,00	43,10	72,00	140,00	10,00	43,60	10	40	61,15
1103410	1"	20,00	51,00	85,00	162,00	12,50	51,20	6	20	83,35
1103411	1 1/4"	25,00	58,20	89,00	162,00	13,80	58,20	4	10	122,30
1103412	1 1/2"	32,00	63,60	97,00	189,00	12,00	63,50	2	6	175,00
1103413	2"	38,00	74,20	106,00	189,00	14,80	74,20	1	4	250,00



SAYCALSA S.C.A.
C.A. SANEAMIENTO Y CALEFACCION, S.A.
POLIGONO INDUSTRIAL AGURAIN SIN
APARTADO DE CORREOS Nº 8
TELEFONOS: (+34) 945 30 01 50/51
TELEFAX: (+34) 945 30 01 53
E-MAIL: saycalisa@sea.es

SUMINISTROS DE MATERIALES PARA INSTALACIÓN DE FLUIDOS

ATTESTAZIONE DI CONFORMITA'

IDENTIFICAZIONE
CLIENTE: EURACCORDI
ORDINE Nº:
RIF. ARTICOLO/I:

PRODOTTO

Raccordo filettato in ghisa malleabile a cuore bianco secondo ISO 49:1994 ideale per il trasporto di tutti i tipi di fluidi.

Pressione massima di lavoro
25 kg/cm2
20 kg/cm2

Temperatura
Fino a 120°
120-300° C



CERTIFICATE OF CONFORMITY
DCT_2712_13/040_13_D

This is to certify that the below mentioned product:

Product denomination	Malleable iron fittings
Location	No.3, Nan Men Road , Pingyin, Jinan City, Shandong Province, P.R.China
Type:	Elbow, Tee, Cross, Short bend, Pitcher tee, Twin elbow, Long sweep bend, Socket, Bushing, Hexagon nipple, Backnut, Cap, Plug, Union, Union elbow and Side outlet elbow and tee
Test report by	State Center of supervision and test for chemical Report No.: VC_BE_20131204

has been assessed against the requirements for the product standards shown below:
EN 10242-1995

The present certificate is issued to be used by the manufacturer:
Jinan Meide Casting Co., Ltd.
No.3, Nan Men Road , Pingyin, Jinan City, Shandong Province, P.R.China

by a Initial Test Report corresponding to this product will render this approval invalid.
applicable Regulation (EU) No 305/2011 in

CURRENT CERTIFICATE
2013-12-27



CERTIFICATE

Quality Austria Training, Certification and Evaluation GmbH awards this Quality Austria Certificate to the following organization(s):

+GF+
Georg Fischer Fittings GmbH
A-3100 Taisen, Nennacker Strasse 75

Production of Threaded and Compression Fittings made of Malleable Cast Iron

The validity of the Quality Austria Certificate will be maintained via annual surveillance audits and one renewal audit after three years.

This Quality Austria Certificate confirms the application and further development of an effective

QUALITY MANAGEMENT SYSTEM
complying with the requirements of standard
ISO 9001:2008

Registration No.: 01228/0
Date of initial issue: 5 February 1998
Valid until: 3 July 2010

Vienna, 4 July 2013

Quality Austria Training, Certification and Evaluation GmbH,
A-1010 Vienna, Zwickergasse 100

Korrad Scheiber
Korrad Scheiber
General Manager

Eckhard Bauer
Eckhard Bauer, MSc
Specialist representative

The current validity of the certificate is documented exclusively on the Internet under
<http://www.qualityaustria.com/cert> EAC 151