



Raccordi in ghisa

malleable cast iron fittings

I nostri articoli sono costruiti con materiali conformi alle normative vigenti in stabilimenti tecnologicamente all'avanguardia.

Our articles are produced according to the applicable regulations in technologically advanced establishments.



Fig. 1

ART. 600

Curva a 90° M.F.
Galvanised cast iron M.F. bent pipe.

Codice Code	Ø	Conf./Pack		€ cad. € each
		⊗	⊞	
1020107	3/8"	10	150	1,72
1020108	1/2"	10	100	1,80
1020109	3/4"	10	60	2,80
1020110	1"	10	70	3,75
1020111	1"1/4	10	30	6,40
1020112	1"1/2	10	24	8,35
1020113	2"	5	15	13,50
1020114	2"1/2	2	4	30,00
1020115	3"	1	4	39,00
1020117	4"	1	2	72,00



Fig. 41

ART. 606

Curva a 45° F.F.
Galvanised cast iron F.F. 45° bent pipe.

Codice Code	Ø	Conf./Pack		€ cad. € each
		⊗	⊞	
1020507	3/8"	10	300	2,25
1020508	1/2"	10	150	2,10
1020509	3/4"	10	80	2,75
1020510	1"	10	80	3,90
1020511	1"1/4	10	50	6,40
1020512	1"1/2	10	40	8,80
1020513	2"	5	16	13,40
1020514	2"1/2	2	8	25,00
1020515	3"	1	6	36,00
1020517	4"	1	2	68,00



Fig. 2

ART. 602

Curva a 90° F.F.
Galvanised cast iron F.F. bent pipe.

Codice Code	Ø	Conf./Pack		€ cad. € each
		⊗	⊞	
1020207	3/8"	10	150	1,80
1020208	1/2"	10	80	1,82
1020209	3/4"	10	60	2,65
1020210	1"	10	50	3,80
1020211	1"1/4	10	24	6,40
1020212	1"1/2	10	20	8,30
1020213	2"	5	10	12,60
1020214	2"1/2	2	6	30,00
1020215	3"	1	4	38,00
1020217	4"	1	2	78,00



Fig. 85

ART. 608

Curva di sorpasso F.F.
Galvanised cast iron cross over.

Codice Code	Ø	Conf./Pack		€ cad. € each
		⊗	⊞	
1020608	1/2"	10	80	2,45
1020609	3/4"	10	40	3,60
1020610	1"	10	40	7,00



Fig. 3

ART. 603

Curva a 90° M.M.
Galvanised cast iron M.M. bent pipe.

Codice Code	Ø	Conf./Pack		€ cad. € each
		⊗	⊞	
1020308	1/2"	10	100	2,50
1020309	3/4"	10	60	3,30
1020310	1"	10	80	5,00
1020311	1"1/4	10	40	9,00
1020312	1"1/2	10	20	13,00
1020313	2"	5	12	18,00



Fig. 90

ART. 610

Gomito 90° F.F.
Galvanised cast iron 90° F.F. elbow joint.

Codice Code	Ø	Conf./Pack		€ cad. € each
		⊗	⊞	
1020706	1/4"	10	300	0,95
1020707	3/8"	10	300	0,94
1020708	1/2"	10	170	0,58
1020709	3/4"	10	90	0,92
1020710	1"	10	100	1,36
1020711	1"1/4	10	70	2,57
1020712	1"1/2	10	50	4,20
1020713	2"	10	25	5,00
1020714	2"1/2	2	12	14,00
1020715	3"	2	10	19,00
1020717	4"	1	4	33,00
1020719	5"	1	2	109,00
1020721	6"	1	2	137,00



Fig. 40

ART. 604

Curva a 45° M.F.
Galvanised cast iron M.F. 45° bent pipe.

Codice Code	Ø	Conf./Pack		€ cad. € each
		⊗	⊞	
1020407	3/8"	10	300	1,90
1020408	1/2"	10	150	1,82
1020409	3/4"	10	80	2,36
1020410	1"	10	100	3,30
1020411	1"1/4	10	60	6,00
1020412	1"1/2	10	40	7,00
1020413	2"	5	14	11,00
1020414	2"1/2	2	8	25,00
1020415	3"	1	6	31,00
1020417	4"	1	2	64,00



Fig. 92

ART. 612

Gomito 90° M.F.
Galvanised cast iron 90° M.F. elbow joint.

Codice Code	Ø	Conf./Pack		€ cad. € each
		⊗	⊞	
1020906	1/4"	10	320	1,15
1020907	3/8"	10	260	1,00
1020908	1/2"	10	160	0,65
1020909	3/4"	10	100	1,06
1020910	1"	10	80	1,75
1020911	1"1/4	10	50	3,06
1020912	1"1/2	10	40	4,62
1020913	2"	10	20	6,00
1020914	2"1/2	2	12	15,00
1020915	3"	2	10	20,80
1020917	4"	1	4	34,00

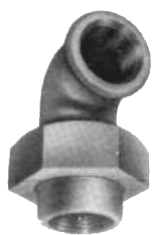


Fig. 95

ART. 614

Gomito a 90° F.F. con bocchettone a sede piana.

Galvanised cast iron flat seat bent pipe union.

Codice Code	Ø	Conf./Pack		€ cad. € each
		⊗	⊞	
1021008	1/2"	10	60	3,85
1021009	3/4"	10	40	4,80
1021010	1"	10	50	5,70
1021011	1"1/4	10	24	9,00
1021012	1"1/2	10	20	12,60
1021013	2"	5	12	19,00



Fig. 130

ART. 622

Tee a 90° F.F.

Galvanised cast iron F.F. tee.

Codice Code	Ø	Conf./Pack		€ cad. € each
		⊗	⊞	
1021606	1/4"	10	200	1,32
1021607	3/8"	10	140	1,21
1021608	1/2"	10	100	0,79
1021609	3/4"	10	60	1,35
1021610	1"	10	60	1,98
1021611	1"1/4	10	36	3,35
1021612	1"1/2	10	24	5,20
1021613	2"	5	24	7,60
1021614	2"1/2	2	8	17,00
1021615	3"	2	8	23,00
1021617	4"	1	4	42,00
1021619	5"	1	2	170,00
1021621	6"	1	2	250,00



Fig. 96

ART. 616

Gomito a 90° F.F. con bocchettone a sede conica.

Galvanised cast iron conic seat F.F. bent pipe union.

Codice Code	Ø	Conf./Pack		€ cad. € each
		⊗	⊞	
1021108	1/2"	10	60	4,20
1021109	3/4"	10	40	5,00
1021110	1"	10	50	6,50
1021111	1"1/4	10	24	10,30
1021112	1"1/2	10	20	13,00
1021113	2"	5	12	21,50
1021114	2"1/2	1	5	47,00
1021115	3"	1	4	58,00



Fig. 180

ART. 624

Croce a 90°.

Galvanised cast iron cross.

Codice Code	Ø	Conf./Pack		€ cad. € each
		⊗	⊞	
1022107	3/8"	10	110	2,65
1022108	1/2"	10	70	2,65
1022109	3/4"	10	50	3,90
1022110	1"	10	60	5,00
1022111	1"1/4	10	24	6,90
1022112	1"1/2	10	24	9,20
1022113	2"	5	12	13,00
1022114	2"1/2	1	7	29,20
1022115	3"	1	5	35,00
1022117	4"	1	3	60,00



Fig. 97

ART. 618

Gomito a 90° M.F. con bocchettone a sede piana.

Galvanised cast iron flat seat M.F. bent pipe union.

Codice Code	Ø	Conf./Pack		€ cad. € each
		⊗	⊞	
1021208	1/2"	10	50	4,10
1021209	3/4"	10	30	5,00
1021210	1"	10	40	6,20
1021211	1"1/4	10	20	10,30
1021212	1"1/2	10	20	14,00
1021213	2"	5	10	20,90



Fig. 221

ART. 626

Distribuzione a gomito.

Galvanised cast iron elbow valve gears.

Codice Code	Ø	Conf./Pack		€ cad. € each
		⊗	⊞	
1022208	1/2"	10	80	2,62
1022209	3/4"	10	60	3,90
1022210	1"	10	80	5,30
1022211	1"1/4	10	34	9,50
1022212	1"1/2	10	24	13,00
1022213	2"	5	12	21,30



Fig. 98

ART. 620

Gomito a 90° M.F. con bocchettone a sede conica.

Galvanised cast iron conic seat M.F. bent pipe union.

Codice Code	Ø	Conf./Pack		€ cad. € each
		⊗	⊞	
1021307	3/8"	10	80	4,80
1021308	1/2"	10	50	4,80
1021309	3/4"	10	30	6,10
1021310	1"	10	40	8,30
1021311	1"1/4	10	20	11,50
1021312	1"1/2	10	20	14,40
1021313	2"	5	10	22,55
1021314	2"1/2	1	5	49,00
1021315	3"	1	4	67,00



Fig. 223

ART. 628

Distribuzione a T.

Galvanised cast iron T-shaped valve gears.

Codice Code	Ø	Conf./Pack		€ cad. € each
		⊗	⊞	
1022308	1/2"	10	70	3,30
1022309	3/4"	10	40	4,20
1022310	1"	10	40	6,20
1022311	1"1/4	10	30	28,00
1022312	1"1/2	10	10	33,00
1022313	2"	5	5	43,00



Fig. 270

ART. 630

Manicotto.
Galvanized cast iron coupling.

Codice Code	Ø	Conf./Pack		€ cad. € each
		🔑	📦	
1022806	1/4"	10	250	0,88
1022807	3/8"	10	250	0,86
1022808	1/2"	10	200	0,66
1022809	3/4"	10	130	0,90
1022810	1"	10	120	1,21
1022811	1"1/4	10	100	1,86
1022812	1"1/2	10	70	2,66
1022813	2"	5	36	3,90
1022814	2"1/2	2	20	10,60
1022815	3"	2	14	13,00
1022817	4"	1	8	28,80
1022818	5"	1	4	80,00
1022821	6"	1	3	93,00



Fig. 310

ART. 638

Controdado.
Galvanized cast iron flat lock nut.

Codice Code	Ø	Conf./Pack		€ cad. € each
		🔑	📦	
1023508	1/2"	10	400	0,58
1023509	3/4"	10	300	0,60
1023510	1"	10	280	0,84
1023511	1"1/4	10	200	1,22
1023512	1"1/2	10	180	1,40
1023513	2"	10	100	2,80

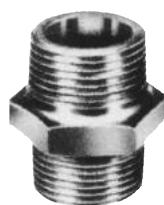


Fig. 280

ART. 632

Nipplo doppio.
Galvanized cast iron nipple.

Codice Code	Ø	Conf./Pack		€ cad. € each
		🔑	📦	
1023006	1/4"	10	400	0,84
1023007	3/8"	10	360	1,00
1023008	1/2"	10	250	0,58
1023009	3/4"	10	160	0,78
1023010	1"	10	120	1,12
1023011	1"1/4	10	100	1,85
1023012	1"1/2	10	80	2,22
1023013	2"	5	50	3,90
1023014	2"1/2	2	24	7,00
1023015	3"	2	16	8,42
1023017	4"	1	10	27,30
1023018	5"	1	4	99,00
1023021	6"	1	4	150,00



Fig. 330

ART. 640

Bocchettone F.F. a sede piana diritto.
Galvanized cast iron F.F. flat pipe union.

Codice Code	Ø	Conf./Pack		€ cad. € each
		🔑	📦	
1023908	1/2"	10	80	2,42
1023909	3/4"	10	60	2,80
1023910	1"	10	60	3,20
1023911	1"1/4	10	40	5,28
1023912	1"1/2	10	30	6,95
1023913	2"	5	20	11,40
1023914	2"1/2	2	10	25,00
1023915	3"	1	8	36,15
1023917	4"	1	2	85,00



Fig. 290

ART. 634

Tappo maschio con bordo.
Galvanized cast iron male cap.

Codice Code	Ø	Conf./Pack		€ cad. € each
		🔑	📦	
1023206	1/4"	10	1000	0,55
1023207	3/8"	10	550	0,54
1023208	1/2"	10	400	0,55
1023209	3/4"	10	250	0,62
1023210	1"	10	200	0,70
1023211	1"1/4	10	140	1,27
1023212	1"1/2	10	100	1,55
1023213	2"	5	66	2,80
1023214	2"1/2	2	36	6,00
1023215	3"	2	20	7,50
1023217	4"	1	12	14,00



Fig. 331

ART. 642

Bocchettone M.F. a sede piana diritto.
Galvanized cast iron M.F. flat pipe union.

Codice Code	Ø	Conf./Pack		€ cad. € each
		🔑	📦	
1024008	1/2"	10	60	2,78
1024009	3/4"	10	40	3,33
1024010	1"	10	60	3,82
1024011	1"1/4	10	30	6,70
1024012	1"1/2	5	24	8,35
1024013	2"	2	14	12,50
1024014	2"1/2	2	6	27,90
1024015	3"	1	4	41,70

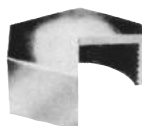


Fig. 300

ART. 636

Calotta esagonale.
Galvanized cast iron female cap.

Codice Code	Ø	Conf./Pack		€ cad. € each
		🔑	📦	
1023306	1/4"	10	600	0,66
1023307	3/8"	10	500	0,68
1023308	1/2"	10	300	0,72
1023309	3/4"	10	250	0,86
1023310	1"	10	150	1,08
1023311	1"1/4	10	150	1,64
1023312	1"1/2	10	130	2,10
1023313	2"	5	70	3,60
1023314	2"1/2	2	40	6,50
1023315	3"	2	24	7,80
1023317	4"	1	12	15,30

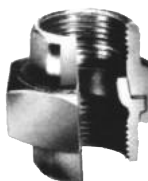


Fig. 340

ART. 644

Bocchettone F.F. a sede conica diritto.
Galvanized cast iron F.F. conic pipe union.

Codice Code	Ø	Conf./Pack		€ cad. € each
		🔑	📦	
1024106	1/4"	10	140	4,17
1024107	3/8"	10	120	3,90
1024108	1/2"	10	80	3,06
1024109	3/4"	10	60	3,50
1024110	1"	10	60	3,95
1024111	1"1/4	10	40	6,70
1024112	1"1/2	10	30	7,80
1024113	2"	5	20	12,80
1024114	2"1/2	2	10	26,50
1024115	3"	2	8	37,00
1024117	4"	1	4	77,00

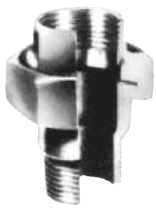


Fig. 341

ART. 646

Bocchettone M.F. a sede conica diritto.
Galvanised cast iron M.F. conic pipe union.

Codice Code	Ø	Conf./Pack		€ cad. € each
		🔗	📦	
1024206	1/4"	10	140	4,40
1024207	3/8"	10	100	3,70
1024208	1/2"	10	60	3,10
1024209	3/4"	10	40	3,90
1024210	1"	10	50	4,45
1024211	1 1/4"	10	30	7,00
1024212	1 1/2"	10	24	8,90
1024213	2"	5	14	14,20
1024214	2 1/2"	2	6	31,00
1024215	3"	1	4	46,30
1024217	4"	1	2	85,00



Fig. 130 R

ART. 654

Tee a 90° ridotto.
Galvanised cast iron TEE reducing pipe fitting.

Codice Code	Ø	Conf./Pack		€ cad. € each
		🔗	📦	
1021707	1/2"x3/8"x3/8"	10	100	1,78
1021708	1/2"x3/8"x1/2"	10	100	1,58
1021710	1/2"x3/4"x1/2"	10	70	1,72
1021719	3/4"x1/2"x1/2"	10	70	1,78
1021720	3/4"x1/2"x3/4"	10	70	1,78
1021722	3/4"x3/4"x1/2"	10	70	1,90
1021724	3/4"x1"x3/4"	10	80	3,00
1021730	1"x1/2"x1/2"	10	60	3,20
1021731	1"x1/2"x3/4"	10	80	2,32
1021732	1"x1/2"x1"	10	60	2,32
1021733	1"x3/4"x1/2"	10	80	3,00
1021734	1"x3/4"x3/4"	10	60	2,40
1021735	1"x3/4"x1"	10	60	2,05
1021736	1"x1"x1/2"	10	60	3,00
1021737	1"x1"x3/4"	10	60	2,80
1021738	1"x1"x1/4x1"	10	50	4,80
1021745	1 1/4x1/2"x1 1/4"	10	60	3,80
1021746	1 1/4x3/4"x3/4"	10	60	4,55
1021748	1 1/4x3/4"x1 1/4"	10	50	4,30
1021751	1 1/4x1"x1"	10	50	4,30
1021752	1 1/4x1"x1 1/4"	10	50	4,30
1021753	1 1/4x1 1/4x1/2"	10	40	4,75
1021754	1 1/4x1 1/4x3/4"	10	40	5,30
1021755	1 1/4x1 1/4x1"	10	40	4,73
1021761	1 1/2x1/2"x1 1/2"	10	40	4,80
1021765	1 1/2x3/4"x1 1/2"	10	40	4,80
1021766	1 1/2x1"x1"	10	40	5,60
1021768	1 1/2x1"x1 1/2"	10	40	5,00
1021771	1 1/2x1 1/4x1 1/2"	10	30	6,12
1021772	1 1/2x1 1/2x1 1/2"	10	30	6,67
1021773	1 1/2x1 1/2x3/4"	10	30	7,51
1021774	1 1/2x1 1/2x1"	10	30	7,65
1021775	1 1/2x1 1/2x1 1/4"	10	30	7,78
1021780	2"x1/2"x2"	5	30	7,60
1021782	2"x3/4"x2"	5	24	8,00
1021786	2"x1"x2"	5	24	7,60
1021789	2"x1 1/4x2"	5	24	8,00
1021793	2"x1 1/2x2"	5	24	8,70
1021796	2"x2"x1"	5	24	8,90
1021797	2"x2"x1 1/4"	5	24	11,12
1021811	2 1/2x1 1/2x2 1/2"	2	12	15,50
1021815	2 1/2x2"x2 1/2"	2	15	17,00
1021828	3"x1 1/2x3"	1	12	24,00
1021832	3"x2"x3"	1	12	24,00
1021833	3"x2 1/2x3"	1	8	25,30
1021844	4"x2"x4"	1	4	48,00
1021843	4"x2 1/2x4"	1	4	50,05
1021848	4"x3"x4"	1	4	50,05



Fig. 529/A

ART. 648

Manicotto M.F.
Galvanised cast iron M.F. coupling.

Codice Code	Ø	Conf./Pack		€ cad. € each
		🔗	📦	
1024407	3/8"	10	250	1,50
1024408	1/2"	10	180	1,50
1024409	3/4"	10	130	1,75
1024410	1"	10	160	2,65
1024411	1 1/4"	5	100	3,50
1024412	1 1/2"	5	70	4,80
1024413	2"	5	30	8,30



Fig. 531

ART. 650

Niplo semplice.
Galvanised cast iron nipple.

Codice Code	Ø	Conf./Pack		€ cad. € each
		🔗	📦	
1024508	1/2"	10	400	0,82
1024509	3/4"	10	280	1,12
1024510	1"	10	160	1,78
1024511	1 1/4"	5	100	8,00
1024512	1 1/2"	5	80	8,60
1024513	2"	5	50	15,05



Fig. 90 R

ART. 652

Gomito 90° ridotto F.F.
Galvanised cast iron reducing elbow joint.

Codice Code	Ø	Conf./Pack		€ cad. € each
		🔗	📦	
1020805	1/2"x1/4"	10	200	1,75
1020806	1/2"x3/8"	10	200	1,10
1020809	3/4"x3/8"	10	120	1,80
1020810	3/4"x1/2"	10	120	1,24
1020813	1"x1/2"	10	120	1,80
1020814	1"x3/4"	10	120	1,90
1020816	1 1/4x1/2"	10	90	3,50
1020817	1 1/4x3/4"	10	90	3,62
1020818	1 1/4x1"	10	70	3,15
1020822	1 1/2x1"	5	60	4,30
1020823	1 1/2x1 1/4"	5	50	4,60
1020827	2"x1"	2	40	7,30
1020828	2"x1 1/4"	2	30	7,90
1020829	2"x1 1/2"	2	30	8,00



Fig. 240

ART. 656

Manicotto di riduzione.
Galvanised cast iron coupling.

Codice Code	Ø	Conf./Pack		€ cad. € each
		🔗	📦	
1022406	1/2"x3/8"	10	250	1,00
1022409	3/4"x3/8"	10	120	1,40
1022410	3/4"x1/2"	10	120	1,19
1022413	1"x1/2"	10	140	1,50
1022414	1"x3/4"	10	140	1,40
1022416	1 1/4x1/2"	10	120	2,80
1022417	1 1/4x3/4"	10	120	2,50
1022418	1 1/4x1"	10	100	2,60
1022420	1 1/2x1/2"	5	100	4,20
1022421	1 1/2x3/4"	5	90	3,80
1022422	1 1/2x1"	5	90	2,80
1022423	1 1/2x1 1/4"	5	70	3,10
1022426	2"x3/4"	2	50	6,30
1022427	2"x1"	2	50	5,70
1022428	2"x1 1/4"	2	40	5,00
1022429	2"x1 1/2"	2	40	4,75



Fig. 241

ART. 658

Riduzione M.F.
Galvanised cast iron reducer.

Codice Code	Ø	Conf./Pack ⊗ ⊞	€ cad. € each
1022503	3/8"x1/4"	10 500	0,75
1022505	1/2"x1/4"	10 450	0,72
1022506	1/2"x3/8"	10 450	0,72
1022508	3/4"x1/4"	10 250	1,03
1022509	3/4"x3/8"	10 250	0,78
1022510	3/4"x1/2"	10 250	0,64
1022511	1"x1/4"	10 180	1,53
1022512	1"x3/8"	10 180	1,33
1022513	1"x1/2"	10 180	0,90
1022514	1"x3/4"	10 180	0,90
1022516	1"1/4x1/2"	10 120	1,56
1022517	1"1/4x3/4"	10 140	1,54
1022518	1"1/4x1"	10 180	1,20
1022520	1"1/2x1/2"	10 90	2,05
1022521	1"1/2x3/4"	10 100	2,22
1022522	1"1/2x1"	10 110	1,84
1022523	1"1/2x1"1/4	10 150	1,84
1022525	2"x1/2"	10 60	3,90
1022526	2"x3/4"	10 60	3,90
1022527	2"x1"	10 56	3,07
1022528	2"x1"1/4	10 60	3,07
1022529	2"x1"1/2	10 60	3,15
1022532	2"1/2x1"	5 40	6,12
1022533	2"1/2x1"1/4	5 36	7,23
1022534	2"1/2x1"1/2	5 36	6,68
1022535	2"1/2x2"	5 48	5,35
1022538	3"x1"	2 24	9,73
1022539	3"x1"1/4	2 24	9,73
1022540	3"x1"1/2	2 24	8,90
1022541	3"x2"	2 24	7,00
1022542	3"x2"1/2	2 32	8,00
1022543	4"x1"	1 12	15,00
1022544	4"x1"1/4	1 10	15,00
1022545	4"x1"1/2	1 12	15,00
1022546	4"x2"	1 12	18,00
1022547	4"x2"1/2	1 12	15,00
1022548	4"x3"	1 12	15,00
1022551	5"x4"	1 6	33,40
1022552	6"x3"	1 6	52,85
1022555	6"x4"	1 6	66,80
1022554	6"x5"	1 6	72,30



Fig. 245

ART. 660

Nipplo ridotto.
Galvanised cast iron reducing nipple.

Codice Code	Ø	Conf./Pack ⊗ ⊞	€ cad. € each
1022606	1/2"x3/8"	10 280	1,33
1022609	3/4"x3/8"	10 160	2,40
1022610	3/4"x1/2"	10 160	1,22
1022613	1"x1/2"	10 120	2,40
1022614	1"x3/4"	10 140	1,80
1022616	1"1/4x1/2"	10 100	3,60
1022617	1"1/4x3/4"	10 100	3,10
1022618	1"1/4x1"	10 70	2,70
1022621	1"1/2x3/4"	10 90	3,60
1022622	1"1/2x1"	10 90	5,00
1022623	1"1/2x1"1/4	10 90	3,06
1022626	2"x1"	5 50	5,30
1022628	2"x1"1/4	5 50	5,35
1022629	2"x1"1/2	5 50	5,35
1022634	2"1/2x1"1/2	2 30	9,20
1022635	2"1/2x2"	2 30	12,20



Fig. 246

ART. 662

Manicotto F.M. di riduzione.
Galvanised cast iron reducing coupling.

Codice Code	Ø	Conf./Pack ⊗ ⊞	€ cad. € each
1022706	1/2"x3/8"	10 280	1,65
1022710	3/4"x1/2"	10 160	1,50
1022713	1"x1/2"	10 160	2,25
1022714	1"x3/4"	10 140	2,40
1022716	1"1/4x1/2"	10 100	4,75
1022717	1"1/4x3/4"	10 100	4,75
1022718	1"1/4x1"	10 100	2,70
1022721	1"1/2x3/4"	5 80	5,00
1022722	1"1/2x1"	5 80	5,00
1022723	1"1/2x1"1/4	5 80	4,50
1022727	2"x1"	2 50	7,30
1022728	2x1"1/4	2 50	7,20
1022729	2x1"1/2	2 50	7,50

GIUNTI RAPIDI IN GHISA JOINT RAPIDES

**ART. 701**

Bigiunto
Double joint

Codice Code	Ø	Conf./Pack ⊗ ⊞	€ cad. € each
7700002	1/2"	5 50	20,50
7700003	3/4"	5 25	23,80
7700004	1"	4 16	28,10
7700005	1"1/4	3 12	36,80
7700006	1"1/2	3 9	48,50
7700008	2"	2 6	69,40

**ART. 703**

Giunto Maschio
Male joint

Codice Code	Ø	Conf./Pack ⊗ ⊞	€ cad. € each
7460001	3/8"	5 75	14,30
7460002	1/2"	5 55	14,30
7460003	3/4"	5 30	15,90
7460004	1"	4 20	18,00
7460005	1"1/4	4 16	26,00
7460006	1"1/2	3 12	32,30
7460008	2"	2 6	46,00

**ART. 705**

Giunto Femmina
Female joint

Codice Code	Ø	Conf./Pack ⊗ ⊞	€ cad. € each
7400001	3/8"	5 75	14,40
7400002	1/2"	5 60	14,40
7400003	3/4"	5 30	16,40
7400004	1"	4 20	18,40
7400005	1"1/4	3 12	26,80
7400006	1"1/2	2 6	33,20
7400008	2"	2 6	37,00



Fig. 1



ART. 792

Curva a 90° M.F.
Galvanised cast iron M.F. bent pipe.

Codice Code	Ø	Conf./Pack		€ cad. € each
		⊗	⊠	
CB20108	1/2"	10	110	2,17
CB20109	3/4"	10	60	3,79
CB20110	1"	1	35	5,15
CB20111	1 1/4"	1	17	8,90
CB20112	1 1/2"	1	12	11,77
CB20113	2"	1	6	18,99
CB20114	2 1/2"	1	3	42,72
CB20115	3"	1	4	54,78
CB20117	4"	1	2	99,46



Fig. 90



ART. 800

Gomito 90° F.F.
Galvanised cast iron 90° FF elbow joint.

Codice Code	Ø	Conf./Pack		€ cad. € each
		⊗	⊠	
CB20707	3/8"	10	250	1,12
CB20708	1/2"	10	120	0,77
CB20709	3/4"	10	90	1,20
CB20710	1"	10	50	1,77
CB20711	1 1/4"	1	30	3,43
CB20712	1 1/2"	1	22	5,54
CB20713	2"	1	12	6,51
CB20714	2 1/2"	1	7	19,10
CB20715	3"	1	4	26,18
CB20717	4"	1	2	46,88



Fig. 2



ART. 794

Curva a 90° F.F.
Galvanised cast iron F.F. bent pipe.

Codice Code	Ø	Conf./Pack		€ cad. € each
		⊗	⊠	
CB20208	1/2"	10	90	2,46
CB20209	3/4"	10	50	3,81
CB20210	1"	1	28	5,15
CB20211	1 1/4"	1	14	8,94
CB20212	1 1/2"	1	10	10,98
CB20213	2"	1	5	15,26
CB20214	2 1/2"	1	2	42,94
CB20215	3"	1	4	53,98
CB20217	4"	1	2	102,34



Fig. 92



ART. 802

Gomito 90° M.F.
Galvanised cast iron 90° MF elbow joint.

Codice Code	Ø	Conf./Pack		€ cad. € each
		⊗	⊠	
CB20907	3/8"	10	250	1,28
CB20908	1/2"	10	150	0,89
CB20909	3/4"	10	90	1,38
CB20910	1"	10	50	2,32
CB20911	1 1/4"	1	30	4,01
CB20912	1 1/2"	1	22	6,02
CB20913	2"	1	12	7,90
CB20914	2 1/2"	1	7	19,69
CB20915	3"	1	4	25,96
CB20917	4"	1	2	44,33



Fig. 40



ART. 796

Curva a 45° M.F.
Galvanised cast iron M.F. 45° bent pipe.

Codice Code	Ø	Conf./Pack		€ cad. € each
		⊗	⊠	
CB20408	1/2"	10	120	2,46
CB20409	3/4"	10	80	3,33
CB20410	1"	1	50	4,66
CB20411	1 1/4"	1	25	8,13
CB20412	1 1/2"	1	18	9,69
CB20413	2"	1	10	15,36
CB20414	2 1/2"	1	6	34,11
CB20415	3"	1	3	37,19
CB20417	4"	1	4	83,94



Fig. 96



ART. 804

Gomito a 90° F.F. con bocchettone a sede conica.
Galvanised cast iron conic seat F.F. bent pipe union.

Codice Code	Ø	Conf./Pack		€ cad. € each
		⊗	⊠	
CB21108	1/2"	10	50	5,29
CB21109	3/4"	10	40	6,13
CB21110	1"	1	28	8,80
CB21113	2"	1	6	29,47



Fig. 41



ART. 798

Curva a 45° F.F.
Galvanised cast iron F.F. 45° bent pipe.

Codice Code	Ø	Conf./Pack		€ cad. € each
		⊗	⊠	
CB20508	1/2"	10	100	2,94
CB20509	3/4"	10	60	3,71
CB20510	1"	1	40	4,75
CB20511	1 1/4"	1	22	8,53
CB20512	1 1/2"	1	15	11,27
CB20513	2"	1	9	15,82
CB20514	2 1/2"	1	4	31,25
CB20515	3"	1	2	39,85
CB20517	4"	1	2	88,65



Fig. 98



ART. 806

Gomito a 90° M.F. con bocchettone a sede conica.
Galvanised cast iron conic seat M.F. bent pipe union.

Codice Code	Ø	Conf./Pack		€ cad. € each
		⊗	⊠	
CB21308	1/2"	10	50	5,31
CB21309	3/4"	10	30	6,75
CB21310	1"	1	23	9,24
CB21313	2"	1	6	31,39



Fig. 130



ART. 808

Tee a 90° F.F.
Galvanised cast iron tee.

Codice Code	Ø	Conf./Pack		€ cad. € each
		⊗	⊞	
CB21607	3/8"	10	120	1,59
CB21608	1/2"	10	70	1,03
CB21609	3/4"	10	60	1,77
CB21610	1"	10	30	2,60
CB21611	1"1/4	1	20	4,66
CB21612	1"1/2	1	14	7,22
CB21613	2"	1	10	10,16
CB21614	2"1/2	1	5	23,30
CB21615	3"	1	4	31,14
CB21617	4"	1	2	61,00



Fig. 290



ART. 816

Tappo maschio con bordo.
Galvanised cast iron male cap.

Codice Code	Ø	Conf./Pack		€ cad. € each
		⊗	⊞	
CB23207	3/8"	10	400	0,61
CB23208	1/2"	10	300	0,61
CB23209	3/4"	10	200	0,83
CB23210	1"	10	120	0,91
CB23211	1"1/4	10	80	1,73
CB23212	1"1/2	10	60	2,11
CB23213	2"	1	40	3,79
CB23214	2"1/2	1	20	8,27
CB23215	3"	1	15	10,66
CB23217	4"	1	8	18,80



Fig. 180



ART. 810

Croce a 90°.
Galvanised cast iron cross.

Codice Code	Ø	Conf./Pack		€ cad. € each
		⊗	⊞	
CB22108	1/2"	10	70	3,71
CB22109	3/4"	10	40	5,55
CB22110	1"	1	28	6,87
CB22111	1"1/4	1	16	9,22
CB22112	1"1/2	1	10	12,30
CB22113	2"	1	7	18,37



Fig. 300



ART. 817

Calotta esagonale.
Galvanised cast iron female cap.

Codice Code	Ø	Conf./Pack		€ cad. € each
		⊗	⊞	
CB23308	1/2"	100	280	0,99
CB23309	3/4"	50	180	1,20
CB23310	1"	20	130	1,40
CB23311	1"1/4	10	80	2,11
CB23312	1"1/2	10	60	2,64
CB23313	2"	1	40	4,99
CB23314	2"1/2	1	25	9,07
CB23315	3"	1	15	9,89
CB23317	4"	1	8	21,64



Fig. 270



ART. 812

Manicotto.
Galvanised cast iron coupling.

Codice Code	Ø	Conf./Pack		€ cad. € each
		⊗	⊞	
CB22807	3/8"	10	250	1,07
CB22808	1/2"	10	180	0,87
CB22809	3/4"	10	110	1,20
CB22810	1"	10	80	1,59
CB22811	1"1/4	1	45	2,49
CB22812	1"1/2	1	35	3,59
CB22813	2"	1	20	5,33
CB22814	2"1/2	1	12	14,75
CB22815	3"	1	9	17,73
CB22817	4"	1	4	41,37



Fig. 340



ART. 818

Bocchettone F.F. a sede conica diritto.
Galvanised cast iron FF conic pipe union

Codice Code	Ø	Conf./Pack		€ cad. € each
		⊗	⊞	
CB24108	1/2"	10	80	3,95
CB24109	3/4"	10	50	4,48
CB24110	1"	10	30	5,17
CB24111	1"1/4	1	20	8,90
CB24112	1"1/2	1	18	10,42
CB24113	2"	1	10	17,14



Fig. 280



ART. 814

Nipples doppio.
Galvanised cast iron nipples.

Codice Code	Ø	Conf./Pack		€ cad. € each
		⊗	⊞	
CB23007	3/8"	10	300	1,48
CB23008	1/2"	10	200	0,79
CB23009	3/4"	10	130	1,03
CB23010	1"	10	80	1,48
CB23011	1"1/4	10	40	2,49
CB23012	1"1/2	1	40	2,88
CB23013	2"	1	20	5,20
CB23014	2"1/2	1	10	9,32
CB23015	3"	1	8	11,23
CB23017	4"	1	4	41,37



Fig. 341



ART. 820

Bocchettone M.F. a sede conica diritto.
Galvanised cast iron MF conic pipe union.

Codice Code	Ø	Conf./Pack		€ cad. € each
		⊗	⊞	
CB24208	1/2"	10	60	3,86
CB24209	3/4"	10	40	4,66
CB24210	1"	1	35	5,78
CB24211	1"1/4	1	18	9,18
CB24212	1"1/2	1	15	11,77
CB24213	2"	1	10	18,79



Fig. 529



ART. 821

Manicotto M.F.
Galvanised cast iron MF coupling.

Codice Code	∅	Conf./Pack		€ cad. € each
		🔑	📦	
CB24408	1/2"	10	200	1,60
CB24409	3/4"	10	120	2,40
CB24410	1"	10	60	3,71



Fig. 241



ART. 828

Riduzione M.F.
Galvanised cast iron reducer.

Codice Code	∅	Conf./Pack		€ cad. € each
		🔑	📦	
CB22505	1/2"x1/4"	10	350	0,79
CB22506	1/2"x3/8"	10	350	0,79
CB22509	3/4"x3/8"	10	200	1,10
CB22510	3/4"x1/2"	10	200	0,83
CB22513	1"x1/2"	10	140	1,16
CB22514	1"x3/4"	10	140	1,08
CB22516	1"1/4x1/2"	10	80	2,01
CB22517	1"1/4x3/4"	10	80	1,79
CB22518	1"1/4x1"	10	80	1,32
CB22520	1"1/2x1/2"	10	70	2,66
CB22521	1"1/2x3/4"	10	70	2,94
CB22522	1"1/2x1"	10	70	1,97
CB22523	1"1/2x1"1/4	10	70	2,01
CB22525	2"x1/2"	1	30	5,35
CB22526	2"x3/4"	1	30	5,29
CB22527	2"x1"	1	30	4,34
CB22528	2"x1"1/4	1	30	4,14
CB22529	2"x1"1/2	1	30	3,71
CB22533	2"1/2x1"1/4	1	20	9,88
CB22534	2"1/2x1"1/2	1	20	9,32
CB22535	2"1/2x2"	1	20	7,13
CB22541	3"x2"	1	15	9,21
CB22542	3"x2"1/2	1	15	10,40
CB22546	4"x2"	1	8	26,80
CB22548	4"x3"	1	8	19,13



Fig. 90 R



ART. 822

Gomito a 90° ridotto FF.
Galvanised cast iron reducing elbow joint.

Codice Code	∅	Conf./Pack		€ cad. € each
		🔑	📦	
CB20810	3/4"x1/2"	10	90	1,65
CB20813	1"x1/2"	10	50	2,40
CB20814	1"x3/4"	10	50	2,52
CB20817	1"1/4x3/4"	10	50	5,15
CB20818	1"1/4x1"	10	50	4,10
CB20822	1"1/2x1"	1	40	6,00
CB20823	1"1/2x1"1/4	1	35	6,53
CB20829	2"x1"1/2	1	25	10,52



Fig. 130 R



ART. 824

Tee a 90° ridotto.
Galvanised cast iron TEE reducing pipe fitting.

Codice Code	∅	Conf./Pack		€ cad. € each
		🔑	📦	
CB21710	1/2"x3/4"x1/2"	10	70	2,33
CB21720	3/4"x1/2"x3/4"	10	60	1,91
CB21732	1"x1/2"x1"	10	40	2,49
CB21735	1"x3/4"x1"	10	40	2,68
CB21737	1"x1"x3/4"	10	30	3,61
CB21745	1"1/4x1/2"x1"1/4	1	30	4,18
CB21748	1"1/4x3/4"x1"1/4	1	30	4,42
CB21752	1"1/4x1"x1"1/4	1	25	4,92
CB21761	1"1/2x1/2"x1"1/2	1	25	5,62
CB21765	1"1/2x3/4"x1"1/2	1	22	6,08
CB21768	1"1/2x1"x1"1/2	1	20	6,57
CB21771	1"1/2x1"1/4x1"1/2	1	17	8,94
CB21780	2"x1/2"x2"	1	15	8,29
CB21782	2"x3/4"x2"	1	15	10,78
CB21786	2"x1"x2"	1	12	8,37
CB21789	2"x1"1/4x2"	1	12	10,78
CB21793	2"x1"1/2x2"	1	10	12,43



Fig. 245



ART. 830

Nipplo ridotto.
Galvanised cast iron reducing nipple.

Codice Code	∅	Conf./Pack		€ cad. € each
		🔑	📦	
CB22606	1/2"x3/8"	10	230	1,85
CB22610	3/4"x1/2"	10	150	1,62
CB22613	1"x1/2"	10	100	3,27
CB22614	1"x3/4"	10	100	1,85
CB22618	1"1/4x1"	10	50	2,94
CB22622	1"1/2x1"	1	50	6,87
CB22623	1"1/2x1"1/4	1	45	3,71
CB22628	2"x1"1/4	1	25	7,70
CB22629	2"x1"1/2	1	25	7,03
CB22635	2"1/2x2"	1	14	16,88



Fig. 240



ART. 826

Manicotto di riduzione.
Galvanised cast iron reducing socket.

Codice Code	∅	Conf./Pack		€ cad. € each
		🔑	📦	
CB22406	1/2"x3/8"	10	200	1,32
CB22409	3/4"x3/8"	10	140	1,87
CB22410	3/4"x1/2"	10	140	1,57
CB22413	1"x1/2"	10	90	1,97
CB22414	1"x3/4"	10	80	1,79
CB22416	1"1/4x1/2"	10	60	3,77
CB22417	1"1/4x3/4"	10	60	3,33
CB22418	1"1/4x1"	10	50	3,23
CB22422	1"1/2x1"	1	45	3,91
CB22423	1"1/2x1"1/4	1	40	4,32
CB22426	2"x3/4"	1	30	8,37
CB22427	2"x1"	1	25	7,70
CB22428	2"x1"1/4	1	22	6,81
CB22429	2"x1"1/2	1	22	6,45



Fig. 246



ART. 832

Manicotto F.M. di riduzione.
Galvanised cast iron reducing coupling.

Codice Code	∅	Conf./Pack		€ cad. € each
		🔑	📦	
CB22710	3/4"x1/2"	10	140	1,60
CB22713	1"x1/2"	10	80	2,46
CB22714	1"x3/4"	10	80	2,60
CB22718	1"1/4x1"	10	50	2,88
CB22722	1"1/2x1"	1	45	5,55
CB22723	1"1/2x1"1/4	1	40	4,86
CB22728	2"x1"1/4	1	25	7,86
CB22729	2"x1"1/2	1	20	8,29



Fig. 90
+GF+

ART. 834

Gomito 90° FF.
FF elbow 90°.

Codice Code	Ø	Conf./Pack		€ cad. € each
		📦	📦	
GF20708	1/2"	10	100	1,25
GF20709	3/4"	10	60	1,98
GF20710	1"	10	30	2,90
GF20711	1"1/4	1	20	5,55
GF20712	1"1/2	1	30	9,00
GF20713	2"	1	20	10,50



Fig. 130
+GF+

ART. 838

Tea a 90° FF.
Equal tee.

Codice Code	Ø	Conf./Pack		€ cad. € each
		📦	📦	
GF21608	1/2"	10	60	1,55
GF21609	3/4"	10	40	2,95
GF21610	1"	1	30	4,30
GF21611	1"1/4	1	30	7,70
GF21612	1"1/2	1	20	12,00
GF21613	2"	1	12	16,50



Fig. 92
+GF+

ART. 835

Gomito a 90° MF.
MF elbow 90°.

Codice Code	Ø	Conf./Pack		€ cad. € each
		📦	📦	
GF20908	1/2"	10	100	1,48
GF20909	3/4"	10	70	2,30
GF20910	1"	10	30	3,86
GF20911	1"1/4	1	25	6,60
GF20912	1"1/2	1	30	9,80
GF20913	2"	1	20	12,90



Fig. 133
+GF+

ART. 839

Tea a 90° FMF.
FMF equal tee.

Codice Code	Ø	Conf./Pack		€ cad. € each
		📦	📦	
GF21648	1/2"	10	80	6,15
GF21649	3/4"	10	40	9,25
GF21650	1"	1	30	15,70



Fig. 96
+GF+

ART. 836

Gomito 90° FF con bocchettone a sede conica.
FF union elbow taper seat.

Codice Code	Ø	Conf./Pack		€ cad. € each
		📦	📦	
GF21108	1/2"	10	60	8,50
GF21109	3/4"	10	40	9,80
GF21110	1"	1	25	14,10
GF21111	1"1/4	1	12	23,50
GF21112	1"1/2	1	20	28,00
GF21113	2"	1	5	47,10



Fig. 134
+GF+

ART. 840

Tea a 90° MFF.
MFF equal tee.

Codice Code	Ø	Conf./Pack		€ cad. € each
		📦	📦	
GF21660	1/2"	10	80	7,00
GF21661	3/4"	10	50	9,50
GF21664	1"	1	30	13,50



Fig. 98
+GF+

ART. 837

Gomito 90° MF con bocchettone a sede conica.
MF union elbow taper seat.

Codice Code	Ø	Conf./Pack		€ cad. € each
		📦	📦	
GF21308	1/2"	10	50	8,50
GF21309	3/4"	1	30	10,80
GF21310	1"	1	20	15,00
GF21311	1"1/4	1	10	25,00
GF21312	1"1/2	1	15	31,00
GF21313	2"	1	10	50,60



Fig. 135
+GF+

ART. 841

Tea a 90° MMM.
MMM equal tee.

Codice Code	Ø	Conf./Pack		€ cad. € each
		📦	📦	
GF21688	1/2"	10	40	11,00
GF21689	3/4"	1	50	13,40
GF21690	1"	1	15	18,00



Fig. 180
+GF+

ART. 842

Croce a 90°.
Equal cross.

Codice Code	Ø	Conf./Pack		€ cad. € each
		🔑	📦	
GF22108	1/2"	10	60	7,30
GF22109	3/4"	1	40	10,90
GF22110	1"	1	20	13,40
GF22111	1"1/4	1	15	18,00
GF22112	1"1/2	1	8	24,00
GF22113	2"	1	10	36,00



Fig. 280
+GF+

ART. 846

Nipples doppio.
Hexagon nipple.

Codice Code	Ø	Conf./Pack		€ cad. € each
		🔑	📦	
GF23008	1/2"	10	150	1,35
GF23009	3/4"	10	100	1,72
GF23010	1"	10	60	2,45
GF23011	1"1/4	1	40	4,00
GF23012	1"1/2	1	30	4,65
GF23013	2"	1	15	8,30



Fig. 221
+GF+

ART. 843

Distribuzione a gomito.
Side outlet elbow.

Codice Code	Ø	Conf./Pack		€ cad. € each
		🔑	📦	
GF22208	1/2"	10	80	6,80
GF22209	3/4"	10	50	10,85
GF22210	1"	1	30	14,30

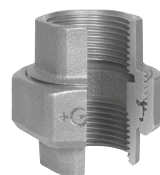


Fig. 340
+GF+

ART. 847

Bocchettone FF a sede conica diritto.
FF union taper seat.

Codice Code	Ø	Conf./Pack		€ cad. € each
		🔑	📦	
GF24108	1/2"	10	50	7,70
GF24109	3/4"	10	50	8,75
GF24110	1"	1	30	10,10
GF24111	1"1/4	1	20	17,35
GF24112	1"1/2	1	15	20,30
GF24113	2"	1	10	33,40



Fig. 223
+GF+

ART. 844

Distribuzione a T.
Side outlet tee.

Codice Code	Ø	Conf./Pack		€ cad. € each
		🔑	📦	
GF22308	1/2"	1	30	9,45
GF22309	3/4"	1	15	11,80
GF22310	1"	1	10	17,45



Fig. 341
+GF+

ART. 848

Bocchettone MF a sede conica diritto.
MF union taper seat.

Codice Code	Ø	Conf./Pack		€ cad. € each
		🔑	📦	
GF24208	1/2"	10	70	6,20
GF24209	3/4"	10	40	7,50
GF24210	1"	1	30	9,25
GF24211	1"1/4	1	15	14,90
GF24212	1"1/2	1	10	18,90
GF24213	2"	1	8	30,00



Fig. 270
+GF+

ART. 845

Manicotto.
Galvanised cast iron coupling.

Codice Code	Ø	Conf./Pack		€ cad. € each
		🔑	📦	
GF22806	1/4"	10	100	2,50
GF22807	3/8"	10	100	2,10
GF22808	1/2"	10	120	1,70
GF22809	3/4"	10	80	2,35
GF22810	1"	10	50	3,10
GF22811	1"1/4	1	40	4,90
GF22812	1"1/2	1	30	7,00
GF22813	2"	1	15	10,40



Fig. 596
+GF+

ART. 849

Tappo per interni.
Plug hexagon/square inside.

Codice Code	Ø	Conf./Pack		€ cad. € each
		🔑	📦	
GF25008	1/2"	10	200	2,15
GF25009	3/4"	10	150	2,80
GF25010	1"	10	150	3,30
GF25011	1"1/4	1	60	4,85
GF25012	1"1/2	1	25	9,10
GF25013	2"	1	20	13,65



BARILOTTI
ZINCATI

ART. 850

Viti di prolungamento 2 filetti in acciaio zincato.

Galvanised steel two thread barrel nipples.

Codice Code	Ø	Conf. 🔗	Pack 📦	€ cad. € each
1165007	cm 6 x 3/8"	10	450	0,72
1165057	cm 7 x 3/8"	10	400	0,72
1165107	cm 8 x 3/8"	10	350	0,80
1165207	cm 10 x 3/8"	10	300	0,88
1165224	cm 12 x 3/8"	10	200	1,03
1165171	cm 15 x 3/8"	10	200	1,24
1165165	cm 20 x 3/8"	10	180	1,46
1165166	cm 25 x 3/8"	10	100	1,80
1165167	cm 30 x 3/8"	10	100	2,20
1164832	cm 40 x 3/8"	1	20	2,80
1164857	cm 50 x 3/8"	1	20	3,00
1164504	cm 60 x 3/8"	1	20	4,00
1164501	cm 80 x 3/8"	1	20	5,00
1164507	cm 100 x 3/8"	1	20	6,00
1164527	cm 150 x 3/8"	1	10	8,55
1164547	cm 200 x 3/8"	1	10	11,15
1164903	cm 4 x 1/2"	10	500	0,42
1164908	cm 5 x 1/2"	10	400	0,45
1165008	cm 6 x 1/2"	10	300	0,48
1165058	cm 7 x 1/2"	10	250	0,51
1165108	cm 8 x 1/2"	10	250	0,57
1165118	cm 9 x 1/2"	10	250	0,62
1165208	cm 10 x 1/2"	10	250	0,65
1165128	cm 11 x 1/2"	10	200	0,74
1165218	cm 12 x 1/2"	10	200	0,77
1165222	cm 13 x 1/2"	10	150	0,85
1165257	cm 14 x 1/2"	10	150	0,91
1165258	cm 15 x 1/2"	10	150	0,94
1165275	cm 16 x 1/2"	10	120	1,08
1165276	cm 17 x 1/2"	10	120	1,10
1165280	cm 18 x 1/2"	10	120	1,11
1165277	cm 19 x 1/2"	10	100	1,14
1165281	cm 20 x 1/2"	10	100	1,17
1165226	cm 21 x 1/2"	10	80	1,28
1164949	cm 22 x 1/2"	10	80	1,37
1164816	cm 23 x 1/2"	10	80	1,43
1164817	cm 24 x 1/2"	10	80	1,43
1165286	cm 25 x 1/2"	10	80	1,45
1165300	cm 26 x 1/2"	10	80	1,65
1165301	cm 27 x 1/2"	10	80	1,70
1165302	cm 28 x 1/2"	10	80	1,71
1164820	cm 29 x 1/2"	10	80	1,71
1165290	cm 30 x 1/2"	10	80	1,71
1164830	cm 40 x 1/2"	1	20	2,19
1164859	cm 50 x 1/2"	1	20	2,60
1164831	cm 60 x 1/2"	1	20	3,14
1164810	cm 70 x 1/2"	1	20	3,90
1164869	cm 80 x 1/2"	1	20	4,28
1164508	cm 100 x 1/2"	1	20	5,33
1164528	cm 150 x 1/2"	1	10	8,55
1164548	cm 200 x 1/2"	1	10	10,83

Codice Code	Ø	Conf. 🔗	Pack 📦	€ cad. € each
1164904	cm 4 x 3/4"	10	350	0,43
1164909	cm 5 x 3/4"	10	250	0,46
1165009	cm 6 x 3/4"	10	250	0,55
1165059	cm 7 x 3/4"	10	200	0,58
1165109	cm 8 x 3/4"	10	180	0,63
1165119	cm 9 x 3/4"	10	180	0,74
1165209	cm 10 x 3/4"	10	150	0,77
1165129	cm 11 x 3/4"	10	150	0,83
1165219	cm 12 x 3/4"	10	100	0,86
1165233	cm 13 x 3/4"	10	100	0,91
1165223	cm 14 x 3/4"	10	100	1,00
1165259	cm 15 x 3/4"	10	100	1,15
1165234	cm 16 x 3/4"	10	80	1,16
1165225	cm 17 x 3/4"	10	80	1,20
1165235	cm 18 x 3/4"	10	80	1,23
1165227	cm 19 x 3/4"	10	80	1,28
1165282	cm 20 x 3/4"	10	80	1,40
1165228	cm 21 x 3/4"	10	60	1,51
1164950	cm 22 x 3/4"	10	60	1,54
1164951	cm 23 x 3/4"	10	60	1,57
1164952	cm 24 x 3/4"	10	60	1,60
1164953	cm 25 x 3/4"	10	60	1,68
1165236	cm 26 x 3/4"	10	50	1,82
1164954	cm 27 x 3/4"	10	50	1,85
1165237	cm 28 x 3/4"	10	50	1,94
1165229	cm 29 x 3/4"	10	50	1,97
1165291	cm 30 x 3/4"	10	50	2,00
1164955	cm 40 x 3/4"	1	20	2,60
1164858	cm 50 x 3/4"	1	20	3,20
1165239	cm 60 x 3/4"	1	20	3,85
1164920	cm 70 x 3/4"	1	20	5,50
1164865	cm 80 x 3/4"	1	10	5,70
1164509	cm 100 x 3/4"	1	10	7,04
1164529	cm 150 x 3/4"	1	5	9,41
1164549	cm 200 x 3/4"	1	5	11,31
1164905	cm 4 x 1"	10	200	0,66
1164910	cm 5 x 1"	10	160	0,71
1165010	cm 6 x 1"	10	100	0,74
1165060	cm 7 x 1"	10	90	0,77
1165110	cm 8 x 1"	10	90	0,86
1165120	cm 9 x 1"	10	80	1,00
1165210	cm 10 x 1"	10	80	1,03
1165130	cm 11 x 1"	10	80	1,14
1165220	cm 12 x 1"	10	60	1,20
1165254	cm 13 x 1"	10	60	1,40
1164958	cm 14 x 1"	10	60	1,40
1165260	cm 15 x 1"	10	60	1,50
1164959	cm 16 x 1"	10	60	1,62
1164960	cm 17 x 1"	10	50	1,68
1165256	cm 18 x 1"	10	50	1,71
1164961	cm 19 x 1"	10	50	1,85
1165283	cm 20 x 1"	10	50	1,95
1164962	cm 21 x 1"	10	50	2,28
1165279	cm 22 x 1"	10	40	2,34
1164963	cm 23 x 1"	10	40	2,37



**BARILOTTI
ZINCATI**

Code Codice	Ø	Conf. ⊗	Pack ⊠	€ cad. € each
1164964	cm 24 x 1"	10	40	2,39
1165288	cm 25 x 1"	10	40	2,42
1165241	cm 26 x 1"	10	40	2,57
1165242	cm 27 x 1"	10	40	2,59
1165274	cm 28 x 1"	10	40	2,62
1165243	cm 29 x 1"	10	40	2,71
1165292	cm 30 x 1"	10	40	2,99
1165248	cm 40 x 1"	1	10	3,99
1164860	cm 50 x 1"	1	10	5,13
1164970	cm 60 x 1"	1	10	6,41
1164866	cm 70 x 1"	1	10	7,13
1164868	cm 80 x 1"	1	5	7,70
1164510	cm 100 x 1"	1	5	9,98
1164530	cm 150 x 1"	1	5	14,25
1164550	cm 200 x 1"	1	5	18,60
1164906	cm 4 x 1"1/4	10	120	0,94
1164911	cm 5 x 1"1/4	10	100	1,00
1165020	cm 6 x 1"1/4	10	80	1,03
1165061	cm 7 x 1"1/4	10	70	1,05
1165111	cm 8 x 1"1/4	10	70	1,14
1165121	cm 9 x 1"1/4	10	50	1,25
1165211	cm 10 x 1"1/4	10	50	1,28
1165131	cm 11 x 1"1/4	10	50	1,45
1165221	cm 12 x 1"1/4	10	40	1,48
1165151	cm 13 x 1"1/4	10	40	1,74
1165161	cm 14 x 1"1/4	10	40	1,77
1165266	cm 15 x 1"1/4	10	40	1,80
1164801	cm 16 x 1"1/4	10	30	2,95
1164802	cm 17 x 1"1/4	10	30	2,96
1165181	cm 18 x 1"1/4	10	30	2,97
1164803	cm 19 x 1"1/4	10	30	2,98
1165183	cm 20 x 1"1/4	10	30	3,00
1165289	cm 25 x 1"1/4	5	25	3,30
1165190	cm 30 x 1"1/4	5	25	3,60
1165240	cm 40 x 1"1/4	1	5	4,80
1164863	cm 50 x 1"1/4	1	5	5,76
1164867	cm 60 x 1"1/4	1	5	7,13
1164923	cm 70 x 1"1/4	1	5	10,00
1164873	cm 80 x 1"1/4	1	3	12,00
1164511	cm 100 x 1"1/4	1	3	15,00
1164531	cm 150 x 1"1/4	1	3	22,60
1164551	cm 200 x 1"1/4	1	3	24,25
1165019	cm 6 x 1"1/2	10	60	1,20
1165062	cm 7 x 1"1/2	10	50	1,28
1165112	cm 8 x 1"1/2	10	50	1,37
1165122	cm 9 x 1"1/2	10	40	1,57
1165212	cm 10 x 1"1/2	10	40	1,60
1165132	cm 11 x 1"1/2	10	40	1,80
1165230	cm 12 x 1"1/2	10	40	1,82
1165152	cm 13 x 1"1/2	10	30	2,25
1165162	cm 14 x 1"1/2	10	30	2,28
1165262	cm 15 x 1"1/2	10	30	2,31
1164927	cm 18 x 1"1/2	5	25	3,50
1165284	cm 20 x 1"1/2	5	25	3,60
1165296	cm 25 x 1"1/2	5	20	4,40

Code Codice	Ø	Conf. ⊗	Pack ⊠	€ cad. € each
1165297	cm 30 x 1"1/2	5	20	5,30
1165196	cm 40 x 1"1/2	1	3	6,70
1164862	cm 50 x 1"1/2	1	3	8,50
1164972	cm 60 x 1"1/2	1	3	10,80
1164932	cm 70 x 1"1/2	1	3	12,50
1164933	cm 80 x 1"1/2	1	3	14,00
1164512	cm 100 x 1"1/2	1	3	18,50
1164532	cm 150 x 1"1/2	1	3	28,00
1164552	cm 200 x 1"1/2	1	3	35,00
1164973	cm 6 x 2"	1	40	2,22
1165113	cm 8 x 2"	1	35	2,40
1165213	cm 10 x 2"	1	30	2,80
1164921	cm 12 x 2"	1	25	3,20
1165263	cm 15 x 2"	1	20	3,60
1164928	cm 18 x 2"	1	14	4,05
1164285	cm 20 x 2"	1	14	4,50
1165287	cm 25 x 2"	1	12	5,50
1165293	cm 30 x 2"	1	12	6,50
1164852	cm 40 x 2"	1	3	8,90
1164864	cm 50 x 2"	1	3	10,60
1165271	cm 60 x 2"	1	3	13,20
1164930	cm 70 x 2"	1	3	16,00
1164874	cm 80 x 2"	1	3	18,00
1164513	cm 100 x 2"	1	3	23,00
1164533	cm 150 x 2"	1	3	34,00
1164553	cm 200 x 2"	1	3	46,00
1165114	cm 8 x 2"1/2	1	24	3,20
1165214	cm 10 x 2"1/2	1	24	3,70
1165192	cm 12 x 2"1/2	1	18	4,20
1165267	cm 15 x 2"1/2	1	12	5,20
1165185	cm 20 x 2"1/2	1	12	6,50
1165278	cm 25 x 2"1/2	1	6	7,90
1164752	cm 30 x 2"1/2	1	6	9,00
1165250	cm 40 x 2"1/2	1	2	12,00
1164870	cm 50 x 2"1/2	1	2	14,00
1164554	cm 100 x 2"1/2	1	2	29,00
1165215	cm 10x3"	1	15	3,80
1165268	cm 15 x 3"	1	8	5,59
1165294	cm 20 x 3"	1	8	6,84
1165285	cm 25 x 3"	1	4	8,27
1165295	cm 30 x 3"	1	4	9,98
1165269	cm 40 x 3"	1	2	18,00
1164871	cm 50 x 3"	1	2	23,00
1165103	cm 100 x 3"	1	2	38,00
1165217	cm 10x4"	1	10	8,00
1164750	cm 15 x 4"	1	5	11,00
1165316	cm 20 x 4"	1	5	15,00
1164934	cm 25 x 4"	1	3	18,00
1165298	cm 30 x 4"	1	3	21,00
1165315	cm 40 x 4"	1	1	28,00
1164939	cm 50 x 4"	1	1	34,00
1165104	cm 100 x 4"	1	1	52,00

ART. 852

Tronchetto nero filettato.
Black trunks.



**TRONCHETTI
NERI**

Codice Code	cm x Ø	Conf. ⊗	Pack ⊞	€ cad. € each
1160207	cm 10x3/8"	10	300	0,60
1160307	cm 15x3/8"	10	200	0,90
1160208	cm 10x1/2"	10	250	0,54
1160308	cm 15x1/2"	10	150	0,77
1160209	cm 10x3/4"	10	150	0,78
1160309	cm 15x3/4"	10	100	1,10
1160210	cm 10x1"	10	80	1,03
1160310	cm 15x1"	10	60	1,54
1160211	cm 10x1"1/4	10	50	1,14
1160311	cm 15x1"1/4	10	40	1,85
1160212	cm 10x1"1/2	10	40	1,45
1160312	cm 15x1"1/2	1	30	2,11
1160213	cm 10x2"	1	30	1,94
1160313	cm 15x2"	1	20	2,55
1160214	cm 10x2"1/2	1	24	2,75
1160314	cm 15x2"1/2	1	12	3,85
1160215	cm 10x3"	1	15	3,56
1160315	cm 15x3"	1	8	5,15
1160217	cm 10x4"	1	10	5,15
1160317	cm 15x4"	1	5	7,00

ART. 854

Manicotto in acciaio nero.
Black steel coupling.



NERO

Codice Code	Ø	lunghezza mm.	Conf. ⊗	€ cad. € each
1161806	1/4"	25	10	0,48
1161807	3/8"	26	10	0,48
1161808	1/2"	34	50	0,48
1161809	3/4"	36	10	0,74
1161810	1"	43	10	1,08
1161811	1"1/4	48	5	1,45
1161812	1"1/2	48	5	1,90
1161813	2"	56	5	2,34
1161814	2"1/2	65	2	3,99
1161815	3"	71	2	5,70
1161817	4"	83	2	10,60

ART. 856

Manicotto in acciaio zincato.
Galvanised steel coupling.



ZINCATO

Codice Code	Ø	lunghezza mm.	Conf. ⊗	€ cad. € each
1161906	1/4"	25	10	0,62
1161907	3/8"	26	10	0,62
1161908	1/2"	34	50	0,66
1161909	3/4"	36	10	0,95
1161910	1"	43	10	1,40
1161911	1"1/4	48	5	1,90
1161912	1"1/2	48	5	2,20
1161913	2"	56	2	3,15
1161914	2"1/2	65	2	5,42
1161915	3"	71	2	6,60
1161917	4"	83	2	13,00

ART. 858

Mezzo manicotto in acciaio nero.
Black half-coupling.



NERO

Codice Code	Ø	lunghezza mm.	Conf. ⊗	€ cad. € each
1162006	1/4"	11	10	0,50
1162007	3/8"	12	10	0,50
1162008	1/2"	15	50	0,50
1162009	3/4"	17	10	0,65
1162010	1"	20	10	0,90
1162011	1"1/4	22	5	1,40
1162012	1"1/2	22	5	1,85
1162013	2"	26	2	2,20
1162014	2"1/2	30	2	4,50
1162015	3"	34	2	5,20
1162017	4"	40	2	9,40

**ART. 870**

Giunti elastici flangiati.
Flange flexible couplings.

Codice Code	Ø	DN	Conf./Pack ⊞	€ cad. € each
2324403	1"1/4	32	10	30,40
2324404	1"1/2	40	10	35,00
2324405	2"	50	10	42,50
2324406	2"1/2	65	5	53,60
2324408	3"	80	5	65,00
2324410	4"	100	4	71,30
2324412	5"	125	2	108,00
2324415	6"	150	2	154,00
2324420	8"	200	2	202,00

- Corpo in Neoprene.
- Flange PN 10/16 fino al DN 150 e PN 10 dal DN 200 in acciaio al carbonio zincate.
- Temperatura di esercizio da -30°C a +110°C.
- Pressione massima di esercizio 15 bar.
- Pressione di scoppio: 60 bar
- Fluidi: acqua, acqua di mare, acidi deboli, aria compressa.
- A norme DIN 50049 3.1B.
- Neoprene body.
- Flanges PN 10/16 until DN150 and PN10 from DN200 mild steel.
- Temperature: -30°C +110°C.
- Burst pressure: 60 bar.
- Applicable fluids: water, warm water, sea water, weak acids.
- Accordin to DIN 50049 3.1B.

Diametro nominale Nominal Diameter		Lunghezza di install. Installed length mm.		Corsa mm. Travel mm.	Movimenti ammissibili Allowable movements from neutral				Pressioni a 80°C Pressions 80°C		
Ø pollici inch	Ø mm	Lungh. libera	Minima Massima	Tot. compressione estensione	Compr. assiale	Estens. assiale	Corsa laterale	Corsa angolare	Positiva PSIG	Positiva kg/cm2	Negativa mm HG
		Natural length	Minimum maximum	Total compressed extended	Axial Compr.	Axial Extension	Lateral deflection	Angular deflection	Positive PSIG	Positive kg/cm2	Negative mm HG
1" 1/4	32	152	143 - 157	140 - 162	13	9	12	31°	225	16	660
1" 1/2	40	152	143 - 157	140 - 162	13	9	12	27°	225	16	660
2"	50	152	143 - 157	140 - 162	13	9	12	20°	225	16	660
2" 1/2	65	152	143 - 157	140 - 162	13	9	12	17°	225	16	660
3"	80	152	143 - 157	140 - 162	13	9	12	14°	225	16	660
4"	100	152	138 - 159	133 - 165	19	13	12	14°	225	16	660
5"	125	152	138 - 159	133 - 165	19	13	12	11°	225	16	660
6"	150	152	138 - 159	133 - 165	19	13	12	9°	225	16	660
8"	200	152	138 - 159	133 - 165	19	13	12	7°	225	16	660

**ART. 872**

Giunti elastici filettati.
Flexible couplings.

Codice Code	Ø	Conf./Pack ⊞	€ cad. € each
2324009	3/4"	10	14,60
2324010	1"	10	19,00
2324011	1"1/4	10	23,20
2324012	1"1/2	10	29,00
2324013	2"	10	36,60
2324014	2"1/2	5	61,00
2324015	3"	5	78,20

- Corpo in Neoprene.
- Temperatura di esercizio da -10°C a +105°C.
- Pressione massima di esercizio 10 bar.
- Pressione di scoppio: dal 3/4" al 2" 40 bar, dal 2"1/2 al 3" 30 bar
- Fluidi: acqua, acqua di mare, acidi deboli, aria compressa.
- Neoprene body.
- Temperature: -10°C +105°C.
- Burst pressure: from 3/4" to 2" 40 bar, from 2"1/2 up to 3" 30 bar.
- Applicable fluids: water, warm water, sea water, weak acids.

Diametro nominale Nominal Diameter		Lunghezza di install. Installed length mm.		Corsa mm. Travel mm.	Movimenti ammissibili Allowable movements from neutral				Pressioni a 80°C Pressions 80°C		
Ø pollici inch	Ø mm	Lungh. libera	Minima Massima	Tot. compressione estensione	Compr. assiale	Estens. assiale	Corsa laterale	Corsa angolare	Positiva PSIG	Positiva kg/cm2	Negativa mm HG
		Natural length	Minimum maximum	Total compressed extended	Axial Compr.	Axial Extension	Lateral deflection	Angular deflection	Positive PSIG	Positive kg/cm2	Negative mm HG
3/4"	20	203	186 - 206	181 - 209	22	6	22	32°	150	16	660
1"	25	203	186 - 206	181 - 209	22	6	22	25°	150	16	660
1" 1/4	32	203	186 - 206	181 - 209	22	6	22	25°	150	16	660
1" 1/2	40	203	186 - 206	181 - 209	22	6	22	20°	150	16	660
2"	50	203	186 - 206	181 - 209	22	6	22	15°	150	16	660
2" 1/2	65	240	224 - 244	218 - 246	22	6	22	12°	150	10	660
3"	80	240	224 - 244	218 - 246	22	6	22	10°	150	10	660



OTTONE

ART. 874

Giunti elastici filettati con bocchettoni in ottone giallo.
Brass yellow unions.

Codice Code	Ø	Conf./Pack ⊞	€ cad. € each
2324059	3/4"	10	52,70
2324060	1"	10	87,40
2324061	1"1/4	10	114,50
2324062	1"1/2	10	140,00
2324063	2"	10	184,30

- Corpo in Nitrile.
- Temperatura di esercizio da -10°C a +105°C.
- Pressione massima di esercizio 10 bar.
- Pressione di scoppio: 40 bar
- Fluidi: acqua, acqua di mare, acidi deboli, aria compressa.
- Nitrile body.
- Temperature: -10°C +105°C.
- Burst pressure: 40 bar.
- Applicable fluids: water, warm water, sea water, weak acids.

Diametro nominale Nominal Diameter		Lunghezza di install. Installed length mm.		Corsa mm. Travel mm.	Movimenti ammissibili Allowable movements from neutral				Pressioni a 80°C Pressions 80°C		
Ø pollici inch	Ø mm	Lungh. libera	Minima Massima	Tot. compressione estensione	Compr. assiale	Estens. assiale	Corsa laterale	Corsa angolare	Positiva PSIG	Positiva kg/cm2	Negativa mm HG
		Natural length	Minimum maximum	Total compressed extended	Axial Compr.	Axial Extension	Lateral deflection	Angular deflection	Positive PSIG	Positive kg/cm2	Negative mm HG
3/4"	20	203	186 - 206	181 - 209	22	6	22	32°	150	16	660
1"	25	203	186 - 206	181 - 209	22	6	22	25°	150	16	660
1" 1/4	32	203	186 - 206	181 - 209	22	6	22	25°	150	16	660
1" 1/2	40	203	186 - 206	181 - 209	22	6	22	20°	150	16	660
2"	50	203	186 - 206	181 - 209	22	6	22	15°	150	16	660



BRONZO

ART. 875

Giunti elastici filettati con bocchettoni in bronzo.
Bronze unions.

Codice Code	Ø	Conf./Pack ⊞	€ cad. € each
2324070	1"	10	101,30
2324071	1"1/4	10	136,00
2324072	1"1/2	10	177,00
2324073	2"	10	225,00

- Corpo in Nitrile.
- Temperatura di esercizio da -10°C a +105°C.
- Pressione massima di esercizio 10 bar.
- Pressione di scoppio: 40 bar
- Fluidi: acqua, acqua di mare, acidi deboli, aria compressa.
- Nitrile body.
- Temperature: -10°C +105°C.
- Burst pressure: 40 bar.
- Applicable fluids: water, warm water, sea water, weak acids.

Diametro nominale Nominal Diameter		Lunghezza di install. Installed length mm.		Corsa mm. Travel mm.	Movimenti ammissibili Allowable movements from neutral				Pressioni a 80°C Pressions 80°C		
Ø pollici inch	Ø mm	Lungh. libera	Minima Massima	Tot. compressione estensione	Compr. assiale	Estens. assiale	Corsa laterale	Corsa angolare	Positiva PSIG	Positiva kg/cm2	Negativa mm HG
		Natural length	Minimum maximum	Total compressed extended	Axial Compr.	Axial Extension	Lateral deflection	Angular deflection	Positive PSIG	Positive kg/cm2	Negative mm HG
1"	25	203	186 - 206	181 - 209	22	6	22	25°	150	16	660
1" 1/4	32	203	186 - 206	181 - 209	22	6	22	25°	150	16	660
1" 1/2	40	203	186 - 206	181 - 209	22	6	22	20°	150	16	660
2"	50	203	186 - 206	181 - 209	22	6	22	15°	150	16	660



ART. 876



Canapa pettinata a coda di cavallo ballette da kg. 12,5 x 4 = kg. 50.
Pony tailed hemp is available in kg. 12,5 small bales.

Codice Code	Conf./Pack	€ al kg € per kg
0021000	Kg 50	8,80

ART. 878



Canapa pettinata a coda di cavallo in buste da kg.1.
Heat-shrinking pony tailed hemp in kg.1 bags.

Codice Code	Conf./Pack	€ cad. € each
0022000	20	11,20

ART. 879



Canapa in gomitoli da gr. 100 circa.
Soft hemp gr. 100.

Codice Code	Conf./Pack	€ cad. € each
0021001	80	3,50

ART. 880



Canapa in bustina gr. 100 e gr. 250.
Hemp is contained in little bags.

Codice Code	gr.	Conf./Pack	€ cad. € each
0020002	100	100	2,00
0020005	250	40	3,90

ART. 881



Spoletta di canapa
Hemp bobbin.

Codice Code	gr.	Conf./Pack	€ cad. € each
0020050	80	10	5,00

ART. 881/A



Contenitore per spoletta
Hemp bobbin container.

Codice Code	Conf./Pack	€ cad. € each
0020051	10	8,60

**ART. 882**

Nastro p.t.f.e per idraulica spessore 0.075.

P.t.f.e tape for hydraulic use which is 0.075 thick.

Codice Code	mt x mm	Conf./Pack ⊞	€ cad. € each
0041008	12x12	1000	0,32
0041009	25x19	1000	1,30
0041010	50x19	250	2,00

Per nastro PTFE mt. 12
Personalizzato minimo d'ordine
6000 pezzi + 80%

**ART. 884**

Nastro PTFE per gas spessore 0.10.
0-10 Thick PTFE tape for gas.

Codice Code	mt x mm	Conf./Pack ⊞	€ cad. € each
0041058	12x12	1000	0,38
0041059	12x19	1000	0,58
0041070	12x12 UNI 751/3 FRP	250	1,18
0041072	12x12 UNI 751/3 GRP	250	2,13

**ART. 886**

Nastro PTFE professionale spessore 0.20.
0.20 thick Teflon tape for professional use.

Codice Code	mt x mm	Conf./Pack ⊞	€ cad. € each
0041098	15x12	250	1,15
0041099	15x19	250	1,73
0041095	15x25	250	2,40

**ART. 887**

Nastro PTFE HD rosa spessore 0.10 per vapore.
0,10 Pink PTFE tape for steam.

Codice Code	mt x mm	Conf./Pack ⊞	€ cad. € each
0041062	12x12	500	1,32
0041064	12x19	500	2,20

**ART. 888**

LOCTITE 55 il filo sigillaraccordi.

Sigillante multifibra in nylon per filettature sia in plastica che metallo.

Codice Code	mt	Conf./Pack ⊞	€ cad. € each
1064020	150	96	23,00
1064022	50 Blister	48	16,00

**ART. 890**

Sigillante anaerobico per filetti acqua-gas-garia-GPL a norma EN 751-1.

Anaerobic sealing product used for water, gas, air and LPG threads according to EN 751-1 regulation.

Codice Code	Tubetti ml Tube ml	Conf./Pack ⊞	€ cad. € each
0043005	75	16	7,90
0043000	100	30	9,40
0043025	250	10	13,90

**ART. 892**

Pasta verde per giunti a vite in barattoli da gr 450.
Green compound used for screw couplings which is contained in gr 450 cans.

Codice Code	gr	Conf./Pack ⊞	€ cad. € each
0121100	450	BARATTOLI 48	2,10
0121175	100	TUBETTO 24	1,60

**ART. 894**

Pasta Kolmat per acqua e gas priva di sostanze nocive in barattoli.

Canned gas and water Kolmat compound without noxious substances.

Codice Code	gr	Conf./Pack ⊞	€ cad. € each
0121300	450	30	9,80



ESENTE AMIANTO

ART. 896

Guarnizioni per raccordi e flessibili 2 mm esente amianto.

2 mm brass pipe fitting gaskets without asbestos.

Codice Code	∅	mm	Conf./Pack ⊞	€ x 100 pz.
0071007	3/8"	14,5x8	100	1,50
0071008	1/2"	18,5x11	100	2,12
0071009	3/4"	24x16,5	100	2,50
0071010	1"	30x22	100	3,50
0071011	1 1/4	38x30	100	6,76
0071012	1 1/2	44x33	100	10,00
0071013	2"	56x43	100	15,50



ESENTE AMIANTO

ART. 898

Guarnizioni esente amianto per bocchettoni ghisa 2 mm.

2 mm cast iron pipe fitting gaskets without asbestos.

Codice Code	∅	mm	Conf./Pack ⊞	€ x 100 pz.
0071607	3/8"	28x19	100	3,50
0071608	1/2"	33x24,5	100	4,50
0071609	3/4"	37x27	100	6,75
0071610	1"	44x33	100	10,00
0071611	1 1/4	56x43	100	15,25
0071612	1 1/2	62x46,5	100	21,50
0071613	2"	79x60,5	100	25,30
0071614	2 1/2	95x75	100	44,70
0071615	3"	110x89	100	95,00